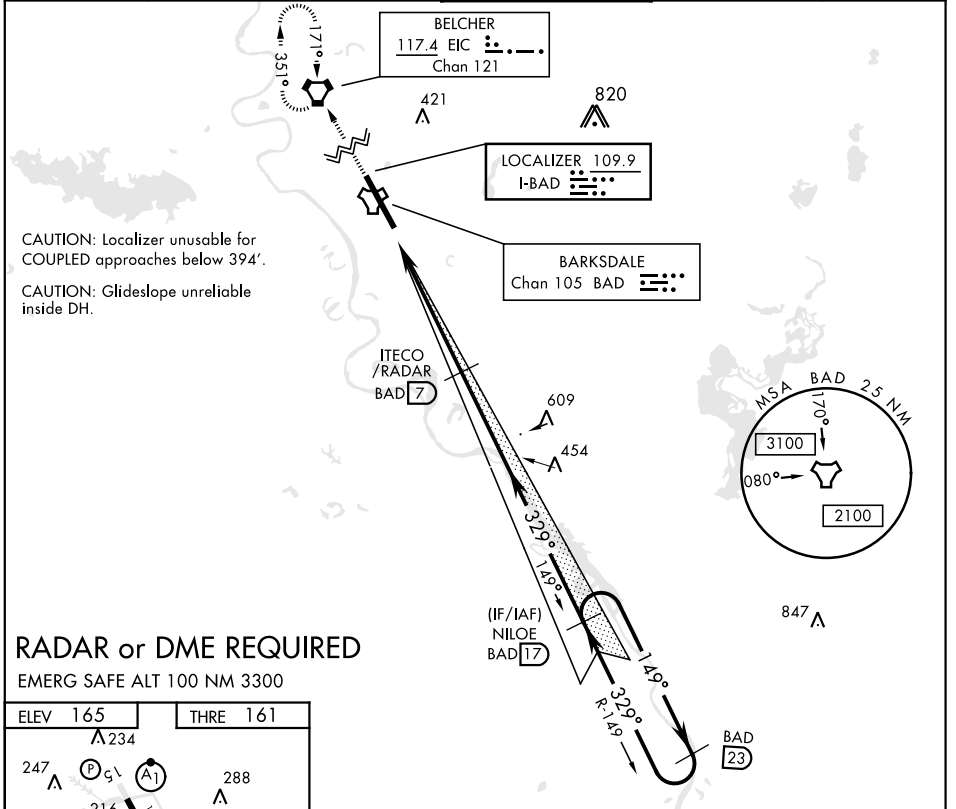


BOSSIER CITY, LOUISIANA

# ILS or LOC W RWY 33

LOC I-BAD <b>109.9</b>	APCH CRS <b>329°</b>	Rwy ldg <b>11,758</b> THRE <b>161</b> Arpt Elev <b>165</b>	AL-391 [USAF]	BARKSDALE AFB (KBAD)
* When ALS inop, increase RVR to 40 and vis to ¼ mile. ** When ALS inop, increase CAT AB RVR to 55 and vis to 1 mile, CAT CDE RVR to 60 and vis to 1 ½ miles. *** Circling not authorized W of Rwy.			ALSF-1 	MISSED APPROACH: Climb to 3100 direct EIC VORTAC and hold.

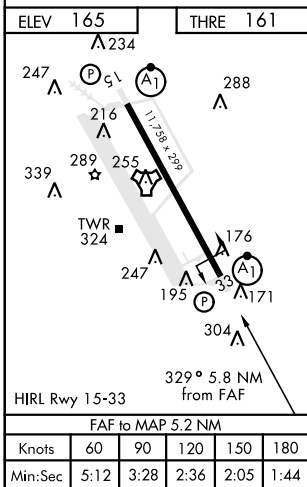
ATIS <b>307.025</b>	SHREVEPORT APP CON 320°-152° <b>123.75 360.725</b> 153°-319° <b>119.9 335.55</b>	BARKSDALE TOWER <b>128.25 278.3</b>	GND CON <b>121.8 253.5</b>	ASR
------------------------	--	--	-------------------------------	-----



CAUTION: Localizer unusable for COUPLED approaches below 394'.  
 CAUTION: Glideslope unreliable inside DH.

## RADAR or DME REQUIRED

EMERG SAFE ALT 100 NM 3300



ELEV 165	THRE 161	3100		EIC	↑ LOC ONLY	NILOE
.6 NM		5.2 NM		149°		3000
329° 5.8 NM from FAF		1800		329°		GS 2.50° TCH 49
CATEGORY	A	B	C	D	E	
S-ILS 33 *	361/24			200	(200-½)	
S-LOC 33 **	560/24	399 (400-½)	560/35	399	(400-¾)	
CIRCLING ***	NOT AUTHORIZED			760-2 595 (600-2)	780-2 ¼ 615 (700-2 ¼)	

BOSSIER CITY, LOUISIANA

32° 30'N-93° 40'W

BARKSDALE AFB (KBAD)

Amtd 5 25JUN15

# ILS or LOC W RWY 33

SC-4, 10 OCT 2019 to 07 NOV 2019

SC-4, 10 OCT 2019 to 07 NOV 2019