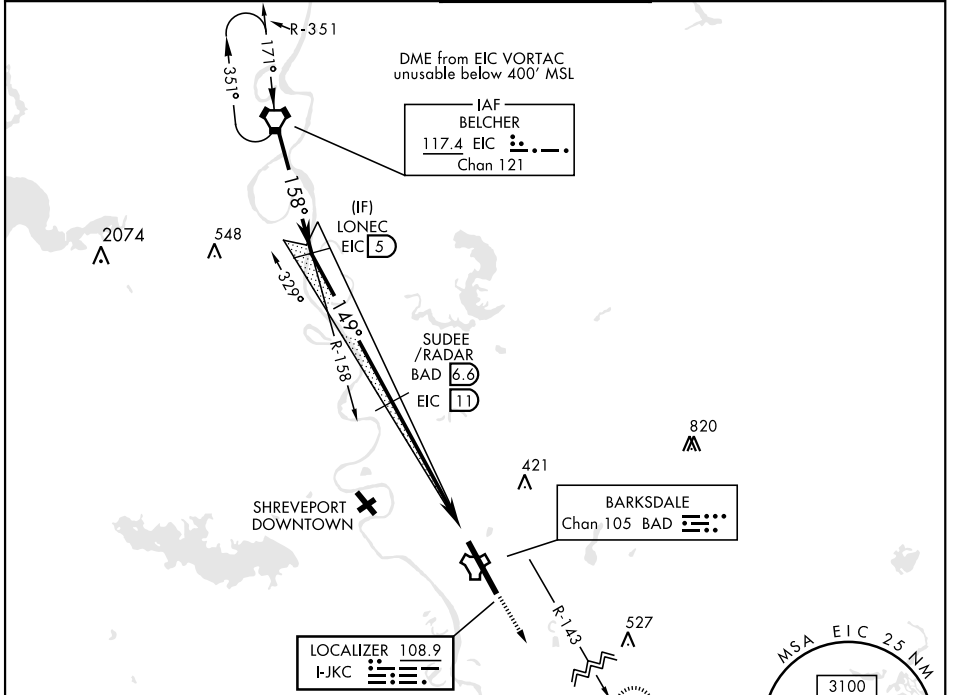


BOSSIER CITY, LOUISIANA

# ILS or LOC Y RWY 15

LOC I-JKC <b>108.9</b>	APCH CRS <b>149°</b>	Rwy ldg <b>11,758</b> THRE <b>163</b> Arpt Elev <b>165</b>	AL-391 [USAF]	BARKSDALE AFB (KBAD)	
* When ALS inop, increase RVR to 40 and vis to 3/4 mile. ** When ALS inop, increase CAT AB RVR to 55 and vis to 1 mile, CAT CDE vis to 1 3/8 miles. *** Circling not authorized W of Rwy.			ALSF-1 	MISSED APPROACH: Climb to 2000, then climbing left turn to join EIC VORTAC R-143 outbound direct TEVLE (EIC 34 DME) and hold, maintain 3000.	
ATIS <b>307.025</b>	SHREVEPORT APP CON 320°-152° <b>123.75 360.725</b> 153°-319° <b>119.9 335.55</b>	BARKSDALE TOWER <b>128.25 278.3</b>	GND CON <b>121.8 253.5</b>	ASR	



SC-4, 10 OCT 2019 to 07 NOV 2019

SC-4, 10 OCT 2019 to 07 NOV 2019

## RADAR or DME REQUIRED

EMERG SAFE ALT 100 NM 3700

ELEV 165	THRE 163
247	234
216	149° 5.8 NM from FAF
289	288
339	247
TWR 324	247
HIRL Rwy 15-33	247
FAF to MAP 5.2 NM	
Knots	60 90 120 150 180
Min:Sec	5:12 3:28 2:36 2:05 1:44

EIC VORTAC	Intcp. lczr LONEC	SUDEE/RADAR BAD	2000	3000
4000	EIC 5	EIC 11	EIC R-143	TEVLE EIC 34
2500	149°	EIC 34	FIRKU EIC 16.2	TACAN
GS 2.50°	1800	5.2 NM	.6 NM	
TCH 53				
CATEGORY	A	B	D	E
S-ILS 15*	363/24		200 (200-1/2)	
S-LOC 15**	640/24	477 (500-1/2)	640/50	477 (500-1)
CIRCLING ***	NOT AUTHORIZED		760-2 595 (600-2)	780-2 1/4 615 (700-2 1/4)

BOSSIER CITY, LOUISIANA

32°30'N-93°40'W

BARKSDALE AFB (KBAD)

Amtd 6 25JUN15

# ILS or LOC Y RWY 15