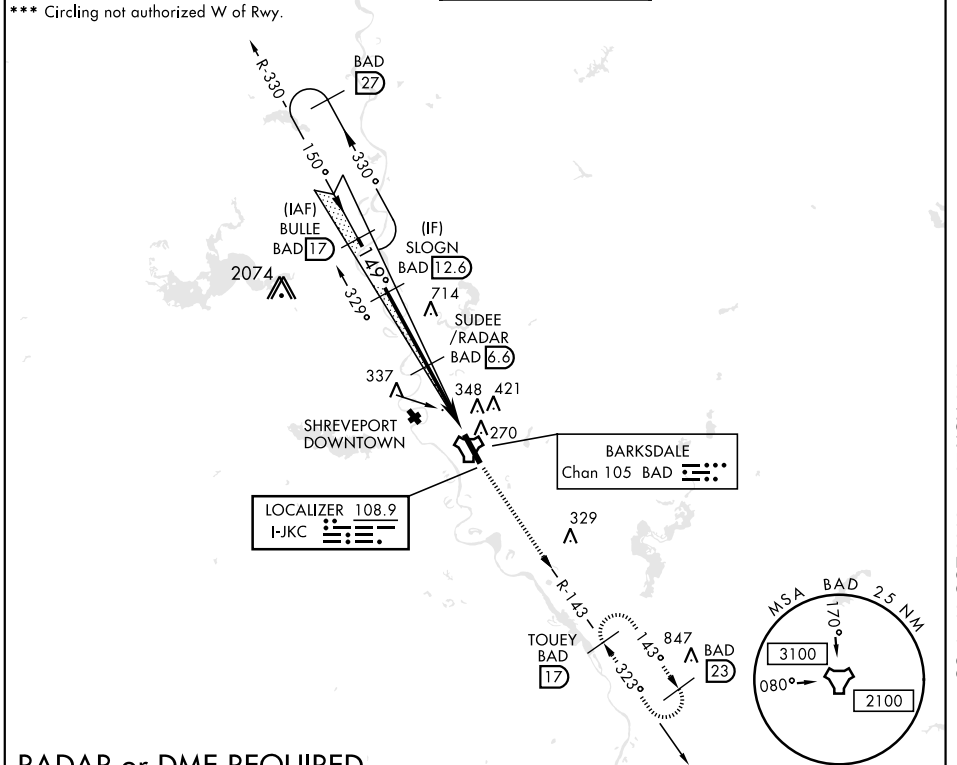


ILS or LOC Z RWY 15

LOC I-JKC 108.9	APCH CRS 149°	Rwy Idg 11,758 THRE 163 Arpt Elev 165	AL-391 [USAF]	BARKSDALE AFB (KBAD)
* When ALS inop, increase RVR to 40 and vis to ¾ mile. ** When ALS inop, increase CAT AB RVR to 55 and vis to 1 mile, CAT CDE vis to 1 ½ miles.			ALSF-1 	MISSED APPROACH: Climb to 3000 via BAD R-143 direct TOUEY and hold.

ATIS 307.025	SHREVEPORT APP CON 320°-152° 123.75 360.725 153°-319° 119.9 335.55	BARKSDALE TOWER 128.25 278.3	GND CON 121.8 253.5	ASR
------------------------	--	--	-------------------------------	-----



SC-4, 10 OCT 2019 to 07 NOV 2019

SC-4, 10 OCT 2019 to 07 NOV 2019

RADAR or DME REQUIRED

EMERG SAFE ALT 100 NM 3300

BULLE R-330	SLOGN	SUDEE/RADAR	↑ LOC ONLY	3000	TOUEY BAD R-143
4000	2500	1800	↑ 2.4	AKUYE	TACAN
GS 2.50° TCH 53	149°		5.2 NM	.6 NM	
CATEGORY	A	B	C	D	E
S-ILS 15 *	363/24		200	(200-½)	
S-LOC 15 **	640/24	477 (500-½)	640/50	477	(500-1)
*** CIRCLING	NOT AUTHORIZED			760-2 595 (600-2)	780-2 ¼ 615 (700-2 ¼)

ELEV 165	THRE 163
HIRL Rwy 15-33	
FAF to MAP 5.2 NM	
Knots	60 90 120 150 180
Min:Sec	5:12 3:28 2:36 2:05 1:44

ILS or LOC Z RWY 15