

BOSSIER CITY, LOUISIANA

# TACAN Y RWY 33

TACAN BAD Chan 105	APCH CRS 323°	Rwy ldg THRE 11,758 161	Arpt Elev 165
-----------------------	------------------	-------------------------------	------------------

AL-391 [USAF]

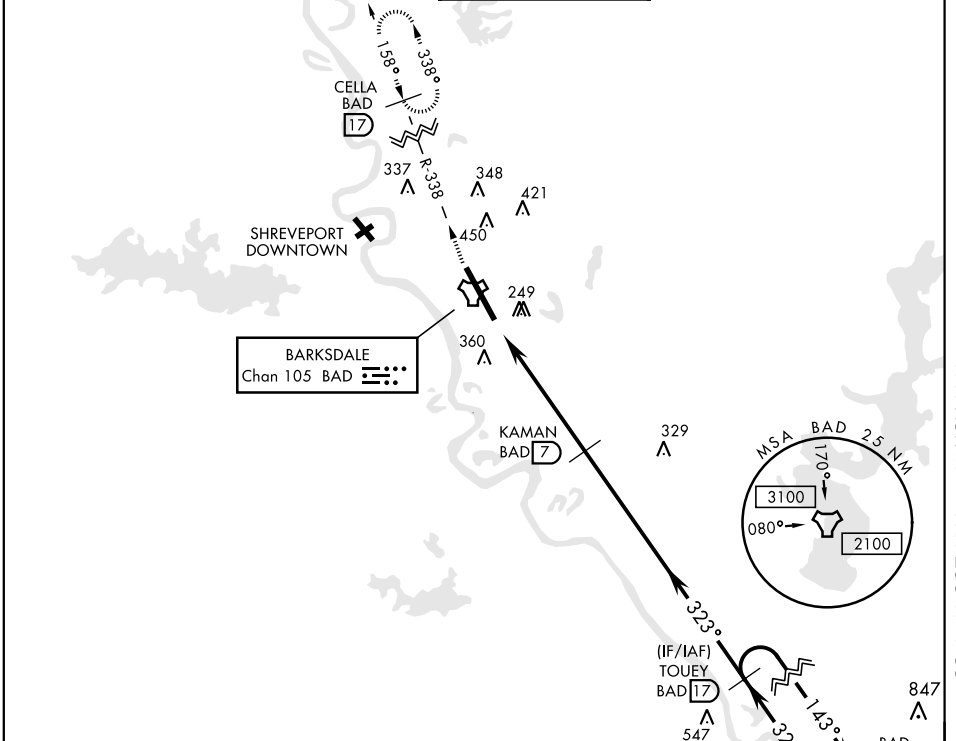
BARKSDALE AFB (KBAD)

\* When ALS inop, increase CAT AB RVR to 55 and vis to 1 mile, CAT CDE vis to 1 3/8 miles.  
 \*\* Circling not authorized W of Rwy.



MISSED APPROACH: Climb to 4000 via BAD R-338 direct CELLA and hold.

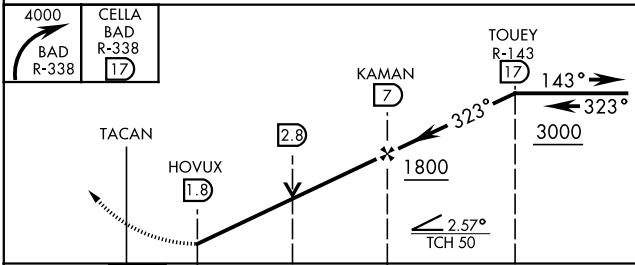
ATIS 307.025	SHREVEPORT APP CON 320°-152° 123.75 360.725 153°-319° 119.9 335.55	BARKSDALE TOWER 128.25 278.3	GND CON 121.8 253.5	ASR
-----------------	--	---------------------------------	------------------------	-----



SC-4, 10 OCT 2019 to 07 NOV 2019

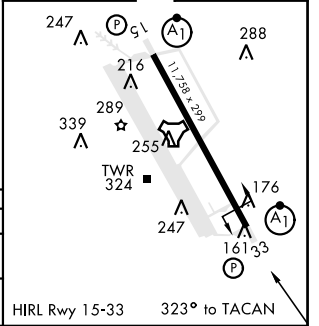
SC-4, 10 OCT 2019 to 07 NOV 2019

EMERG SAFE ALT 100 NM 3300



ELEV 165	THRE 161
----------	----------

CATEGORY	A	B	C	D	E
S-33 *	640/24	479 (500-1/2)	640/50	479	(500-1)
CIRCLING **	NOT AUTHORIZED			760-2 595 (600-2)	780-2 1/4 615 (700-2 1/4)



BOSSIER CITY, LOUISIANA

32° 30' N-93° 40' W

BARKSDALE AFB (KBAD)

Amtd 6 25JUN15

# TACAN Y RWY 33