

LOC/DME I-SCK <b>109.1</b> Chan 28	APP CRS <b>294°</b>	Rwy Idg TDZE Apt Elev	<b>8650</b> <b>32</b> <b>33</b>
--	------------------------	-----------------------------	---------------------------------------

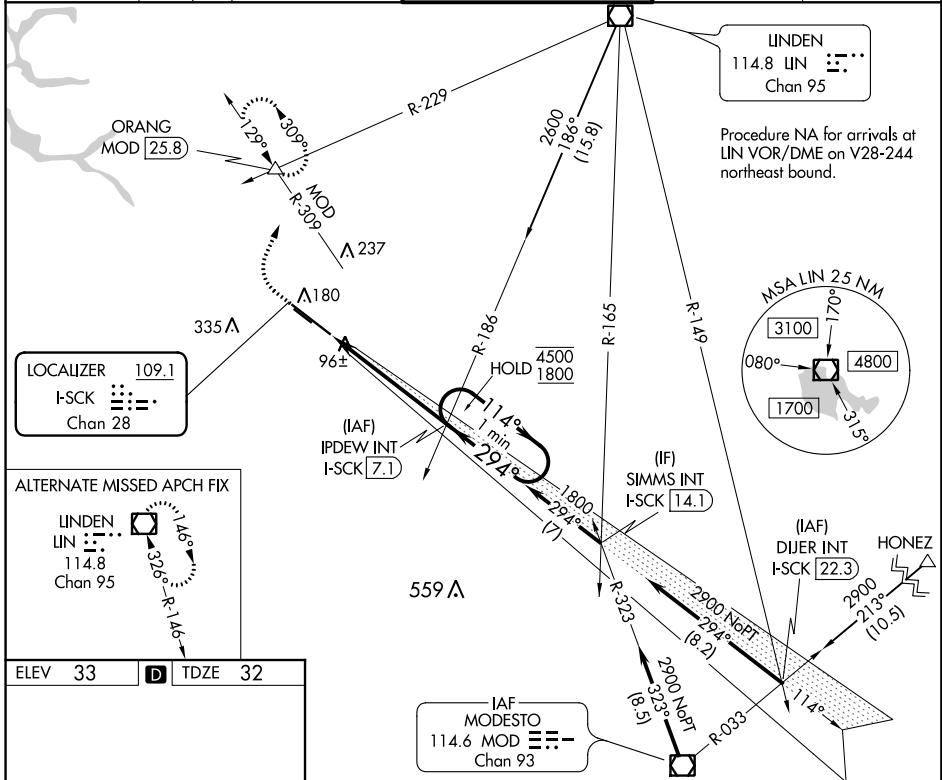
# ILS RWY 29R (SA CAT II)

## STOCKTON METROPOLITAN (SCK)

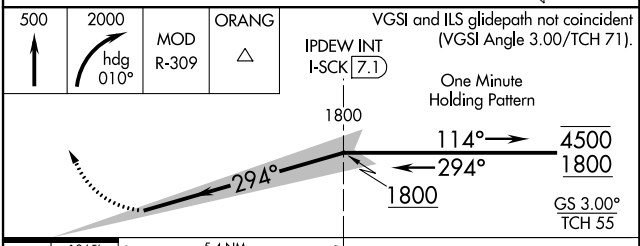
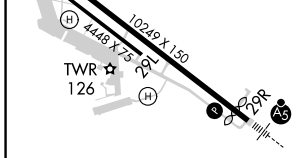
**Reduced lighting: requires specific OPSPEC, MSPEC, or LOA approval and use of autoland or HUD to touchdown. Procedure NA when tower closed.**

**MALS R** MISSED APPROACH: Climb to 500 then climbing right turn to 2000 on heading 010° and MOD VOR/DME R-309 to ORANG INT/MOD 25.8 DME and hold.

ATIS <b>118.25</b>	NORCAL APP CON (SE-NW) <b>123.85 278.3</b> (N-SE) <b>125.1 363.2</b>	STOCKTON TOWER * <b>120.3 (CTAF) 0 239.0</b>	GND CON <b>121.9</b>	UNICOM <b>122.95</b>
-----------------------	---	---	-------------------------	-------------------------



ELEV 33	<b>D</b>	TDZE 32
---------	----------	---------



CATEGORY	A	B	C	D
S-ILS 29R	RA 105/12 100 DA 132			

**SA CATEGORY II ILS - SPECIAL AIRCREW & AIRCRAFT CERTIFICATION REQUIRED**

SW-2, 10 OCT 2019 to 07 NOV 2019

SW-2, 10 OCT 2019 to 07 NOV 2019