

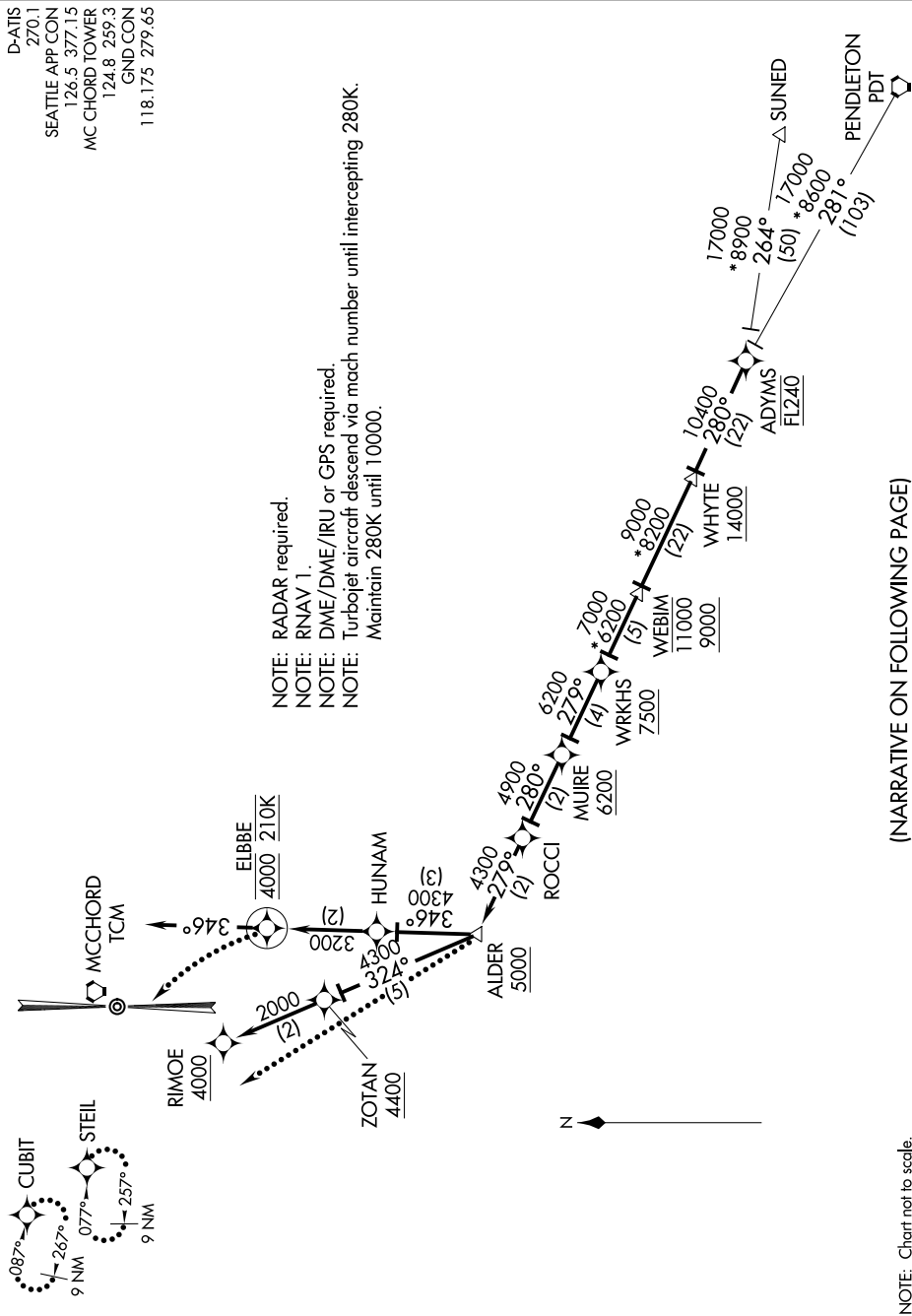
(ADYMS.ADYMS2) 17117

ADYMS TWO ARRIVAL (RNAV)

MCCHORD FIELD (JOINT BASE LEWIS-MCCHORD) (KTCM)
AL-414 (FAA) TACOMA, WASHINGTON

D-ATIS
270.1
SEATTLE APP CON
126.5 377.15
MC CHORD TOWER
124.8 259.3
GND CON
118.175 279.65

NOTE: RADAR required.
NOTE: RNAV 1.
NOTE: DME/DME/IRU or GPS required.
NOTE: Turbojet aircraft descend via mach number until intercepting 280K.
NOTE: Maintain 280K until 10000.



(NARRATIVE ON FOLLOWING PAGE)

NOTE: Chart not to scale.

NW-1, 10 OCT 2019 to 07 NOV 2019

ADYMS TWO ARRIVAL (RNAV)

MCCHORD FIELD (JOINT BASE LEWIS-MCCHORD) (KTCM)
TACOMA, WASHINGTON

(ADYMS.ADYMS2) 15OCT15