

# ALDER-TWO DEPARTURE (ALDER2 • ALDER)

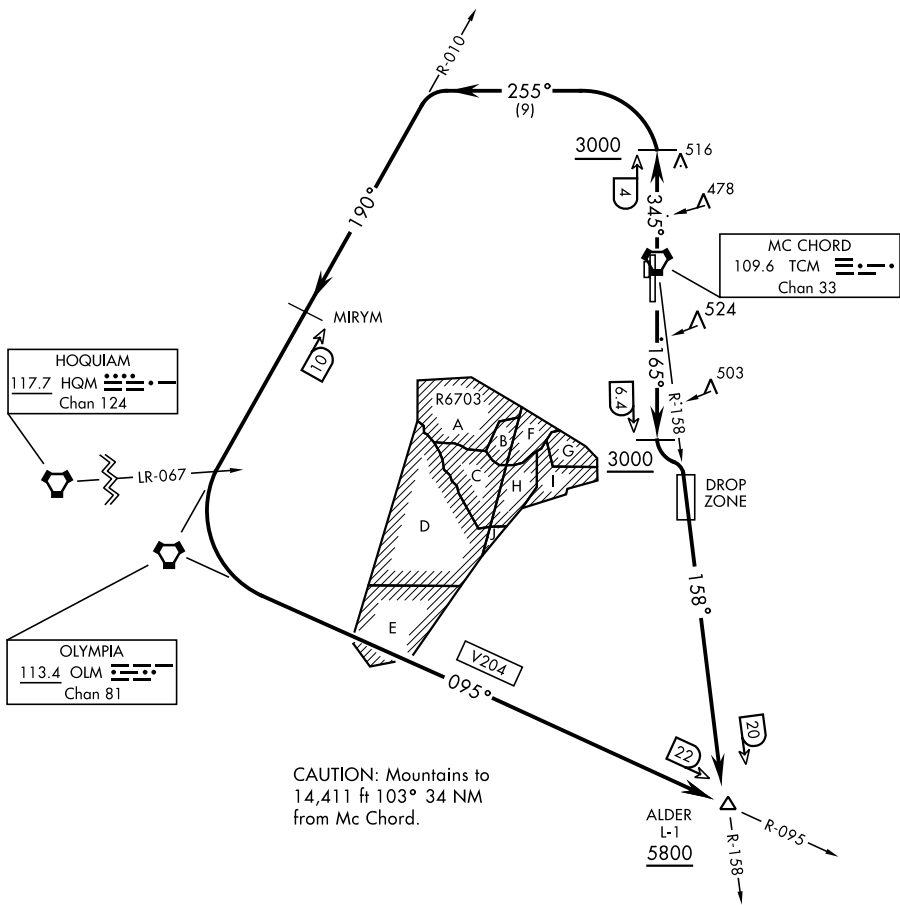
MC CHORD FIELD (KTCM)

TACOMA, WASHINGTON

SL-414 [USAF]

ATIS  
 270.1  
 GND CON  
 118.175 279.65  
 MC CHORD TOWER  
 124.8 259.3  
 SEATTLE DEP CON  
 126.5 377.15

If unable to make ATC charted crossing restrictions advise ATC prior to departure.



NW-1, 10 OCT 2019 to 07 NOV 2019

NW-1, 10 OCT 2019 to 07 NOV 2019

CAUTION: Mountains to 14,411 ft 103° 34 NM from Mc Chord.



## DEPARTURE ROUTE DESCRIPTION

**TAKE-OFF RWY 16:** Climb on track 165° to cross TCM VORTAC 6.4 DME, at or above 3000. Then turn left to intercept TCM R-158 to cross ALDER at or above 5800.

**TAKE-OFF RWY 34:** Climb on track 345° to cross TCM VORTAC 4 DME at or above 3000. Then turn left heading 255° to intercept OLM VORTAC R-010 MIRYM then OLM. Then via V204 to cross ALDER at or above 5800.

# ALDER-TWO DEPARTURE (ALDER2 • ALDER)

TACOMA, WASHINGTON  
MC CHORD FIELD (KTCM)