

ELLENSBURG THREE ARRIVAL (RNAV)

AL-414 (FAA)

TACOMA, WASHINGTON

61.02 AON Z 01 610 OCT 2019 01 '1'-MN

ARRIVAL ROUTE DESCRIPTION ELLENSBURG TRANSITION (ELN.ELN3)

LANDING RUNWAY 16: From KPOWW on track 275° to cross WAALP between 4700 and 5700, then on heading 330° or as assigned by ATC. Expect RADAR vectors to final approach course.

LANDING RUNWAY 34: From KPOWW on track 210° to cross OWSIN at or above 5600, then on track 259° to TUNNR, then on track 316° to cross JETEM at/above 3200. Expect ILS or visual approach.

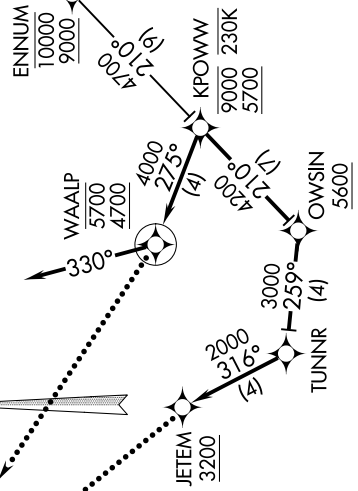
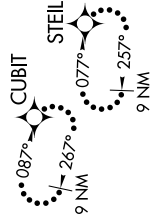
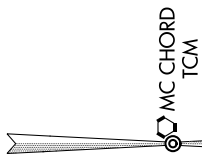
LOST COMMUNICATIONS

RUNWAY 16: At WAALP, proceed direct STEIL and execute approach, if unable hold as published, maintain 4000, squawk appropriate beacon code.

RUNWAY 34: At JETEM, execute approach, if unable, proceed direct CUBIT and hold as published, maintain 4000, squawk appropriate beacon code.



D-ATIS 270.1
SEATTLE APP CON 126.5 377.15
MC CHORD TOWER 124.8 259.3
GND CON 118.175 279.65



NOTE: RADAR required.
NOTE: RNAV 1.
NOTE: DME/DME/IRU or GPS required.
NOTE: Turbojet aircraft descend via mach number until intercepting 280K, maintain 280K until 10000.

ELLENSBURG THREE ARRIVAL (RNAV)

(ELN.ELN3) 10NOV16

TACOMA, WASHINGTON

MCCHORD FIELD (JOINT BASE LEWIS-MCCHORD) (KTCM)

NOTE: Chart not to scale.

NW-1, 10 OCT 2019 to 07 NOV 2019