

TACOMA, WASHINGTON

ILS RWY 34 (CAT II)

LOC I-TCM 108.5	APCH CRS 345°	Rwy Idg THRE Arpt Elev 10,108 322 322
---------------------------	-------------------------	---

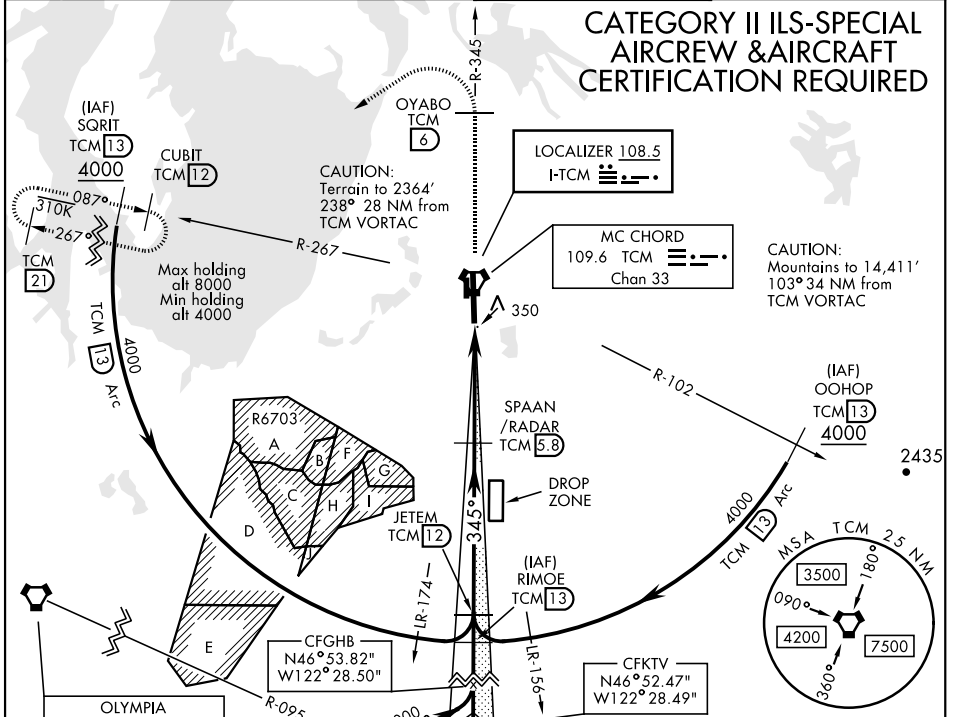
AL-414 [USAF]

MC CHORD FIELD (KTTCM)

ALSF-2

MISSED APPROACH: Climb to 4000 on TCM VORTAC R-345 to OYABO, then turn left via 215° course to intercept TCM R-267 to CUBIT and hold, continue climb in hold to 4000. Cross OYABO at or above 3000.

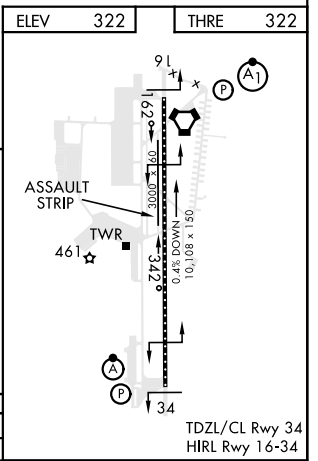
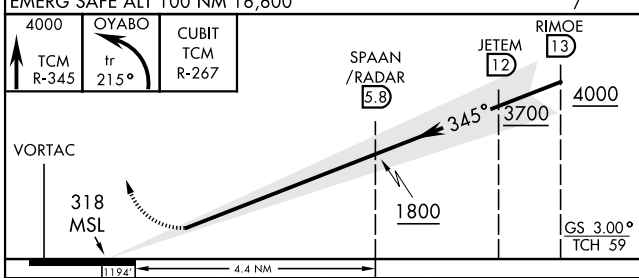
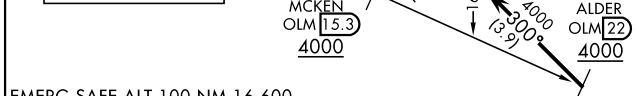
ATIS 270.1	SEATTLE APP CON 126.5 377.15	MC CHORD TOWER 124.8 259.3	GND CON 118.175 279.65
----------------------	--	--------------------------------------	----------------------------------



NW-1, 10 OCT 2019 to 07 NOV 2019

NW-1, 10 OCT 2019 to 07 NOV 2019

ELEV 322	THRE 322
----------	----------



CATEGORY	A	B	C	D	E
S-ILS 34	RA 139/12		100	DA 421	

TDZ/CL Rwy 34
HIRL Rwy 16-34

TACOMA, WASHINGTON

47°08'N-122°29'W

MC CHORD FIELD (KTTCM)

Amdt 2 08DEC16

ILS RWY 34 (CAT II)