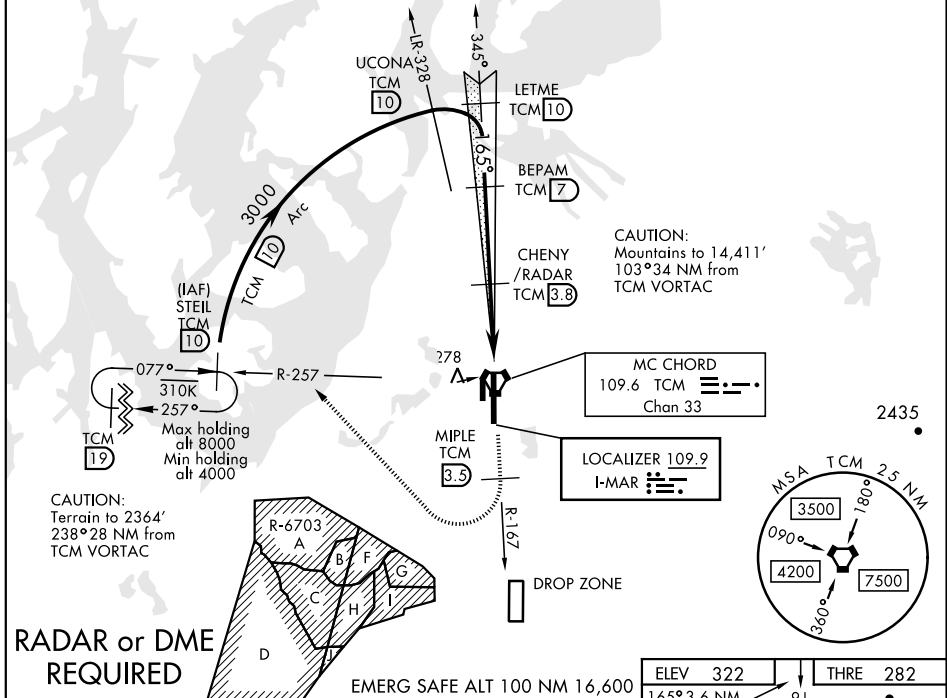


TACOMA, WASHINGTON

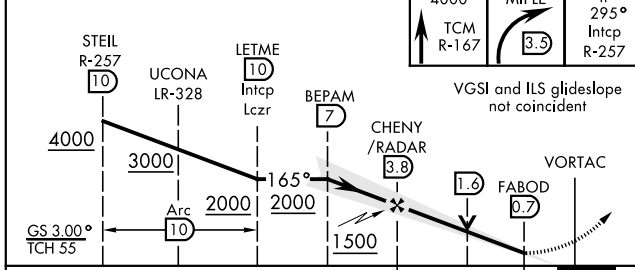
ILS or LOC RWY 16

LOC I-MAR 109.9	APCH CRS 165°	Rwy Idg THRE 282 Arpt Elev 322	AL-414 [USAF]	MC CHORD FIELD (KTCM)
▼ ** When ALS inop, increase RVR to 40, vis to 3/4 mile. ** When ALS inop, increase CAT AB RVR to 55, vis to 1 mile, CAT CDE vis to 1 1/2 miles.		ALSF-1 (A1) MISSED APPROACH: Climb to 4000 on TCM VORTAC R-167. At 3.5 DME turn right via 295° course to intercept TCM R-257 to STEIL and hold. Continue climb in hold to 4000.		
ATIS 270.1	SEATTLE APP CON 126.5 377.15	MC CHORD TOWER 124.8 259.3	GND CON 118.175 279.65	

*** Circling not authorized E of Rwy 16-34.



EMERG SAFE ALT 100 NM 16,600



ELEV 322	THRE 282
165° 3.6 NM from FAF	(A1)
91	
162	
91 x 901' 01"	
342	
34	TDZL/CL Rwy 34 HIRL Rwy 16-34
FAF to MAP 3.1 NM	
Knots	60 90 120 150 180
Min:Sec	3:06 2:04 1:33 1:14 1:02

CATEGORY	A	B	C	D	E
S-ILS 16*	482/24		200 (200-1/2)		
S-LOC 16**	800/24	518 (500-1/2)	800/55 518 (500-1)		
CIRCLING***	940-1	619 (700-1)	940-1 1/4 619 (700-1 1/4)	940-2 619 (700-2)	1020-2 1/2 699 (700-2 1/2)

TACOMA, WASHINGTON
Amdt 1 15OCT15

47°08'N-122°29'W

MC CHORD FIELD (KTCM)

ILS or LOC RWY 16

NW-1, 10 OCT 2019 to 07 NOV 2019

NW-1, 10 OCT 2019 to 07 NOV 2019