

TACOMA, WASHINGTON

# ILS or LOC RWY 34

LOC I-TCM <b>108.5</b>	APCH CRS <b>345°</b>	Rwy Idg THRE <b>10,108</b> Arprt Elev <b>322</b>
---------------------------	-------------------------	--

AL-414 [USAF]

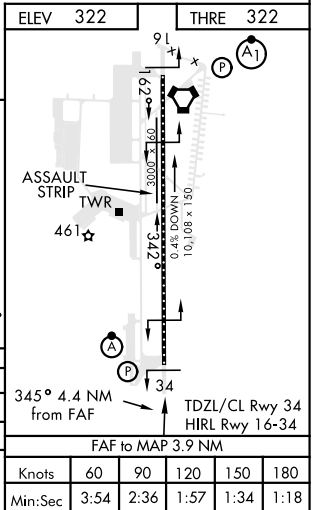
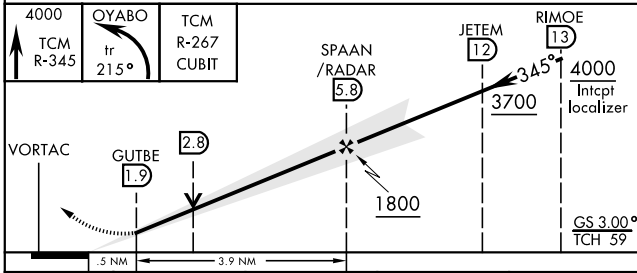
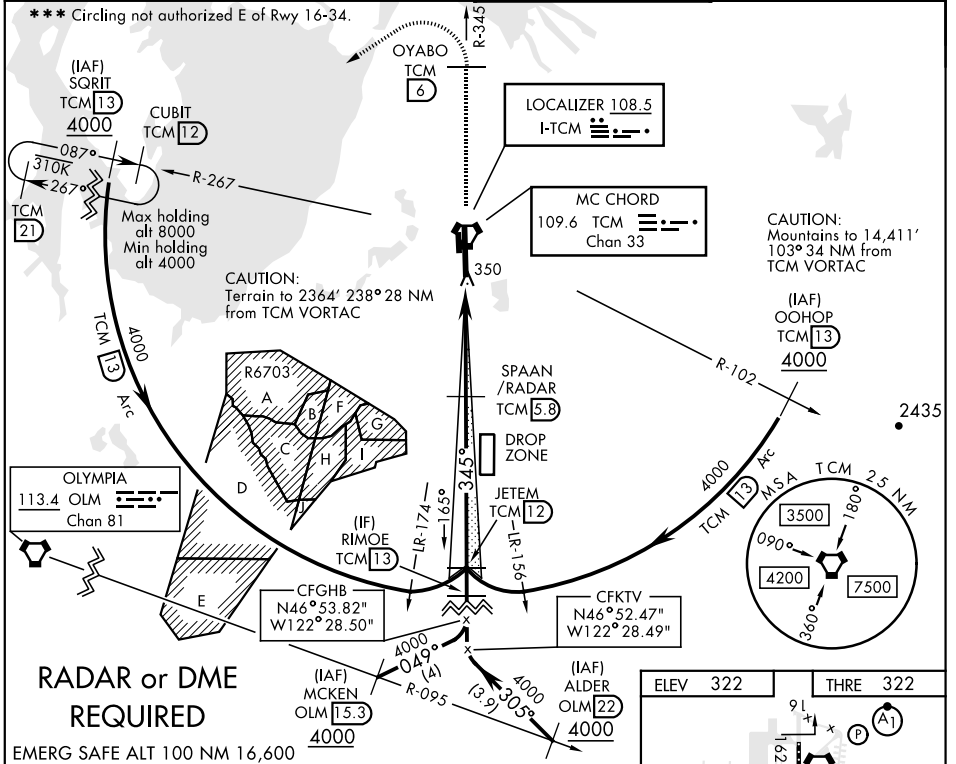
MC CHORD FIELD (KTCM)

**▼** \*When ALS inop, increase RVR to 40, vis to 3/4 mile.  
 \*\*When ALS inop, increase CAT AB RVR to 55, vis to 1 mile, CAT CD vis to 1 1/8 miles.

**ALS-F2**

**MISSED APPROACH:** Climb to 4000 on TCM VORTAC R-345 to OYABO, then turn left via 215° course to intercept TCM R-267 to CUBIT and hold, continue climb in hold to 4000. Cross OYABO at or above 3000.

ATIS <b>270.1</b>	SEATTLE APP CON <b>126.5 377.15</b>	MC CHORD TOWER <b>124.8 259.3</b>	GND CON <b>118.175 279.65</b>
----------------------	--	--------------------------------------	----------------------------------



CATEGORY	A	B	C	D
S-ILS 34 *	521/18 200 (200-1/2)			
S-LOC 34 **	820/24	499 (500-1/2)	820/50	499 (500-1)
CIRCLING ***	940-1	619 (700-1)	940-1 3/4 619 (700-1 1/4)	940-2 619 (700-2)

TACOMA, WASHINGTON  
 Amdt 1 18AUG16

47°08'N-122°29'W

MC CHORD FIELD (KTCM)

# ILS or LOC RWY 34

NW-1, 10 OCT 2019 to 07 NOV 2019

NW-1, 10 OCT 2019 to 07 NOV 2019