

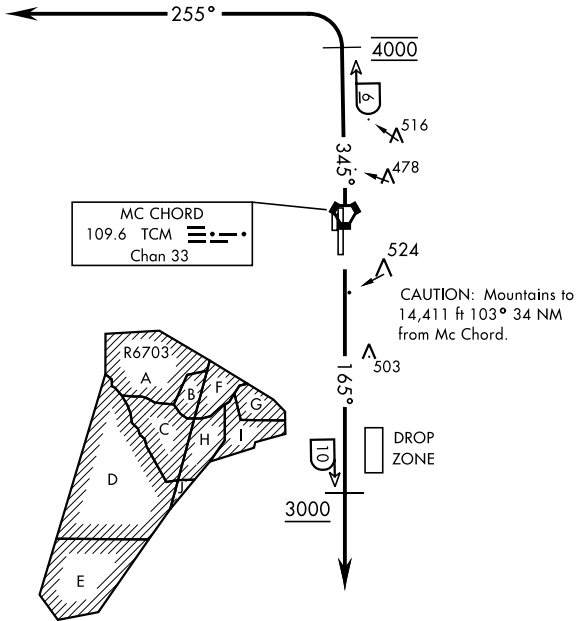
ATIS  
 270.1  
 GND CON  
 118.175 279.65  
 MC CHORD TOWER  
 124.8 259.3  
 SEATTLE DEP CON  
 126.5 377.15

If unable to make ATC charted crossing  
 restrictions advise ATC prior to departure.

Maximum 250 KIAS

SEATTLE  
 116.8 SEA  
 Chan 115

L-1



NW-1, 10 OCT 2019 to 07 NOV 2019

NW-1, 10 OCT 2019 to 07 NOV 2019

**RADAR REQUIRED**

① 2270' from Rwy 34



**DEPARTURE ROUTE DESCRIPTION**

TAKE-OFF RWY 16: Climb on track of 165° to cross TCM VORTAC 10 DME at or above 3000. Expect radar vectors within TCM 8 DME. Maintain ATC assigned altitude.

TAKE-OFF RWY 34: Climb on track 345° to cross TCM VORTAC 6 DME at 4000. Then turn left tracking 255° to expect radar vectors. Maintain ATC assigned altitude.