

TACAN RWY 16

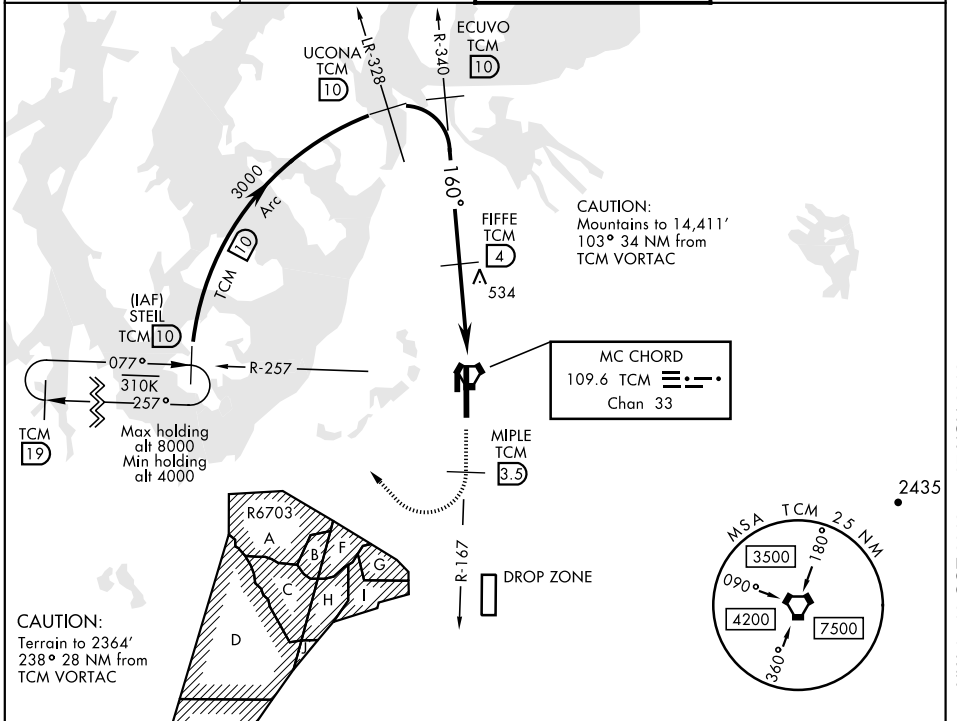
VORTAC TCM 109.6 Chan 33	APCH CRS 160°	Rwy Idg 10,108 THRE 282 Arpt Elev 322
--	-------------------------	--

AL-414 [USAF]

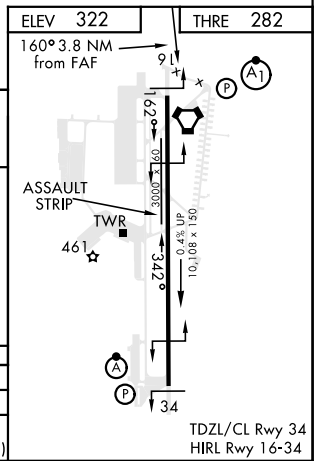
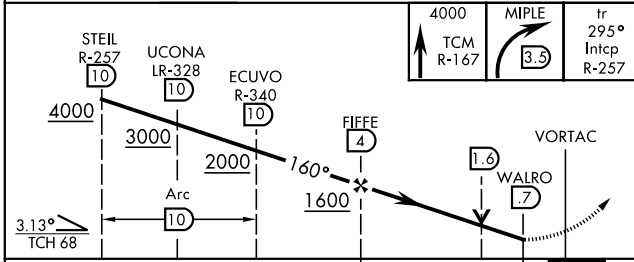
MC CHORD FIELD (KTCM)

A1
 * When ALS inop, increase CAT AB RVR to 55, vis to 1 mile, CAT CDE vis to 1 3/8 miles.
 ** Circling not authorized E of Rwy 16-34.

ATIS 270.1	SEATTLE APP CON 126.5 377.15	MC CHORD TOWER 124.8 259.3	GND CON 118.175 279.65
----------------------	--	--------------------------------------	----------------------------------



ELEV 322	THRE 282
----------	----------



CATEGORY	A	B	C	D	E
S-16*	800/24	518 (500+1/2)	800/55	518	(500-1)
CIRCLING**	940-1 619 (700-1)	940-1 3/4 619 (700-1 3/4)	940-2 619 (700-2)	1020-2 1/2 699 (700-2 1/2)	

TACAN RWY 16

NW-1, 10 OCT 2019 to 07 NOV 2019

NW-1, 10 OCT 2019 to 07 NOV 2019