

TACOMA, WASHINGTON

TACAN RWY 34

VORTAC TCM 109.6 Chan 33	APCH CRS 347°	Rwy Idg THRE 322 Arpt Elev 322
--	-------------------------	--

AL-414 [USAF]

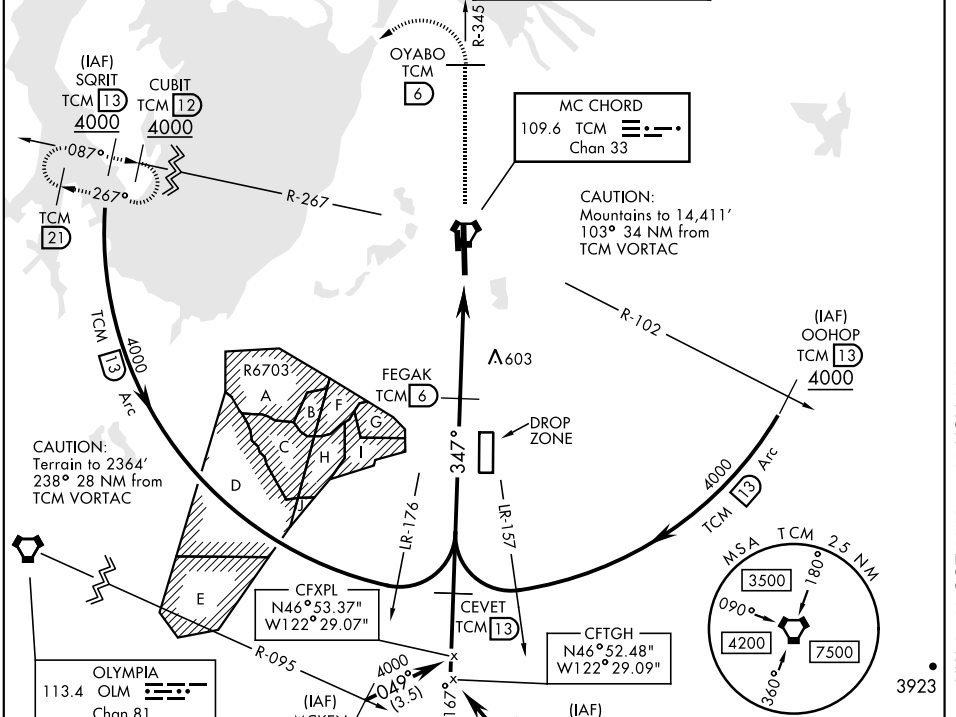
MC CHORD FIELD (KTCM)

▼ * When ALS inop, increase CAT AB RVR to 55, vis to 1 mile, CAT CD vis to 1½ miles.
 ** Circling not authorized E of rwy 16-34.

ALSF-2

MISSED APPROACH: Climb to 4000 on TCM VORTAC R-345 to OYABO, then turn left via 215° course to intercept TCM R-267 to CUBIT and hold. Cross OYABO at or above 3000. Continue climb in hold to 4000.

ATIS 270.1	SEATTLE APP CON 126.5 377.15	MC CHORD TOWER 124.8 259.3	GND CON 118.175 279.65
----------------------	--	--------------------------------------	----------------------------------



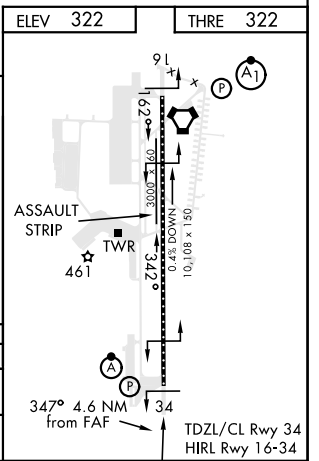
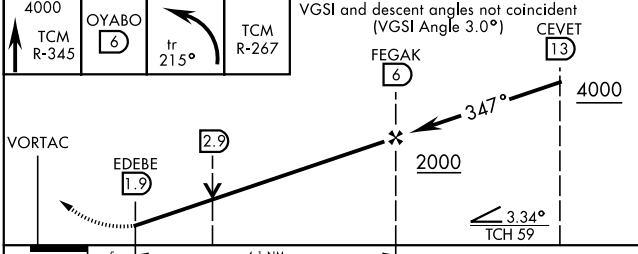
NW-1, 10 OCT 2019 to 07 NOV 2019

NW-1, 10 OCT 2019 to 07 NOV 2019

ELEV 322	THRE 322
----------	----------

EMERG SAFE ALT 100 NM 16,600

VGS1 and descent angles not coincident (VGS1 Angle 3.0°)



CATEGORY	A	B	C	D
S-34 *	860/24 539 (600-½)		860/55 539 (600-1)	
CIRCLING **	940-1 619 (700-1)		940-1 ¾ 619 (700-1 ¾)	940-2 619 (700-2)

TACOMA, WASHINGTON
Amdt 2 18AUG16

47°08'N-122°29'W

MC CHORD FIELD (KTCM)

TACAN RWY 34