

WHYTE FIVE ARRIVAL

6102 AON Z0 01 1'-MN

ARRIVAL ROUTE DESCRIPTION

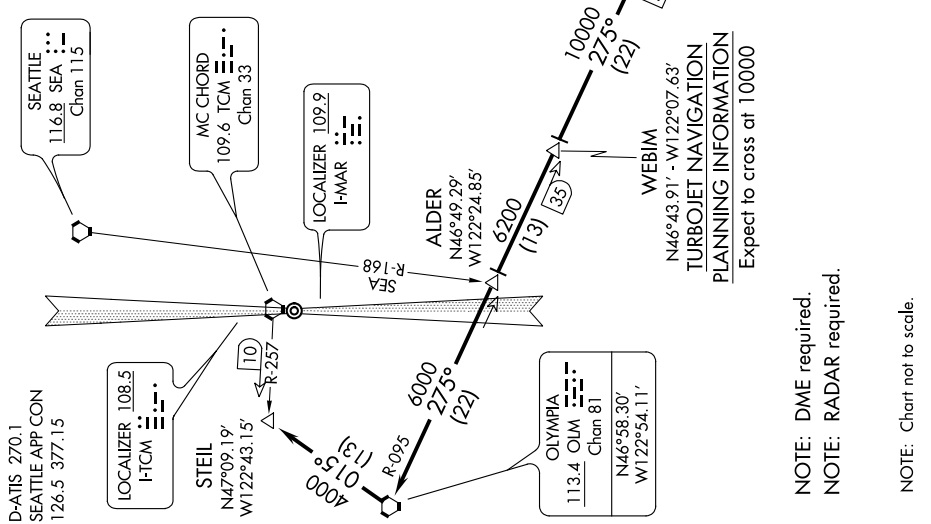
PENDLETON TRANSITION (PDT.WHYTE5): From over PDT VORTAC on PDT R-276 and OLM R-095 to **WHYTE**. Thence....

YAKIMA TRANSITION (YKM.WHYTE5): From over YKM VORTAC on YKM R-250 to **WHYTE**. Thence....

.... From over **WHYTE** on OLM R-095 to **WEBIM**, then on OLM R-095 to **ALDER INT.** Thence....

.... **RWY 16:** On OLM R-095 to OLM VORTAC, then on OLM R-015 to **STEIL**, expect ILS or LOC RWY 16 or **TACAN RWY 16**.

.... **RWY 34:** Expect ILS or LOC Y RWY 34, ILS or LOC Z RWY 34 or ILS Z RWY 34 (CAT III).



D-ATIS 270.1
SEATTLE APP CON
126.5 377.15

LOCALIZER 108.5
I-TCM

STEIL
N47°09.19'
W122°43.15'

LOCALIZER 109.9
I-MAR

ALDER
N46°49.29'
W122°24.85'

OLYMPIA
113.4 OLM
Chan 81
N46°58.30'
W122°54.11'

WEBIM
N46°43.91' - W122°07.63'
TURBOJET NAVIGATION
PLANNING INFORMATION
Expect to cross at 10000

NOTE: DME required.
NOTE: RADAR required.

NOTE: Chart not to scale.

WHYTE FIVE ARRIVAL

(WHYTE.WHYTE5) 15OCT15

NW-1, 10 OCT 2019 to 07 NOV 2019