

LOC I-TRI <b>109.9</b>	APP CRS <b>230°</b>	Rwy Idg TDZE Apt Elev	<b>8000</b> <b>1518</b> <b>1519</b>
---------------------------	------------------------	-----------------------------	---

# ILS or LOC RWY 23

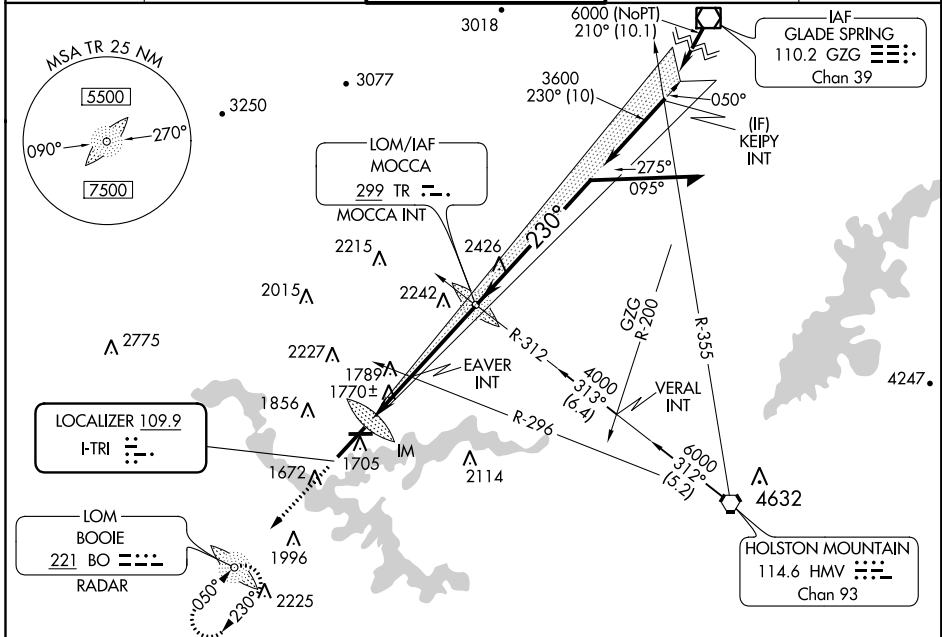
TRI-CITIES (TRI)

ADF or RADAR required.

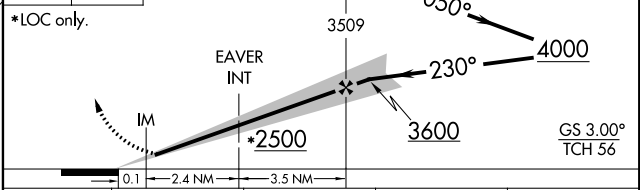
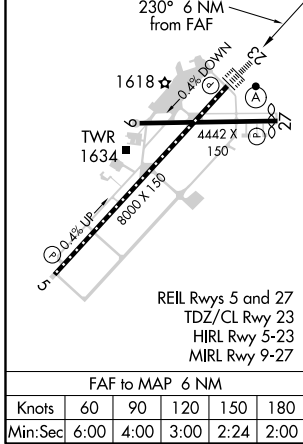
**⚠** Circling to Rwy 9 NA at night. Circling NA northwest or Rwy 9 and 23. CAUTION: Air traffic control tower 1634 feet MSL located 940 feet right of runway centerline 357 feet from runway threshold. When control tower closed: S-ILS 23 increase visibilities to RVR 4000 all Cats and S-LOC 23 increase visibilities 1/2 SM all Cats.

ALSIF-2 **ⓐ** MISSED APPROACH: Climb to 3800 direct BOOIE LOM/RADAR and hold.

ATIS <b>118.25</b>	TRI-CITY APP CON ★ <b>134.425 349.0</b>	TRI-CITY TOWER ★ <b>119.5 (CTAF) 257.8</b>	GND CON <b>121.7 348.6</b>	UNICOM <b>122.95</b>
-----------------------	--	---	-------------------------------	-------------------------



ELEV 1519	<b>D</b> TDZE 1518	3800	BO
-----------	--------------------	------	----



CATEGORY	A	B	C	D
S-ILS 23	1718/18 200 (200-1/2)			
S-LOC 23	2500/40 982 (1000-3/4)	2500-1 982 (1000-1)	2500-2 1/2	982 (1000-2 1/2)
<b>C</b> CIRCLING	2500-1 1/4 981 (1000-1 1/4)	2500-1 1/2 981 (1000-1 1/2)	2500-3 981 (1000-3)	
EAVER FIX MINIMUMS (DUAL VOR RECEIVERS REQUIRED)				
S-LOC 23	2020/24 502 (600-1/2)		2020/55 502 (600-1)	
<b>C</b> CIRCLING	2120-1 601 (700-1)	2180-1 661 (700-1)	2320-2 1/4 801 (900-2 1/4)	2500-3 981 (1000-3)

SE-1, 10 OCT 2019 to 07 NOV 2019

SE-1, 10 OCT 2019 to 07 NOV 2019