

APP CRS	Rwy Idg	<b>4320</b>
<b>096°</b>	TDZE	<b>1519</b>
	Apt Elev	<b>1519</b>

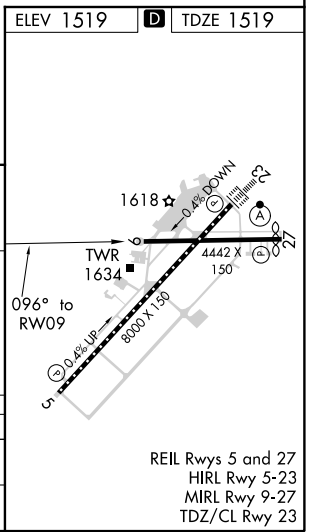
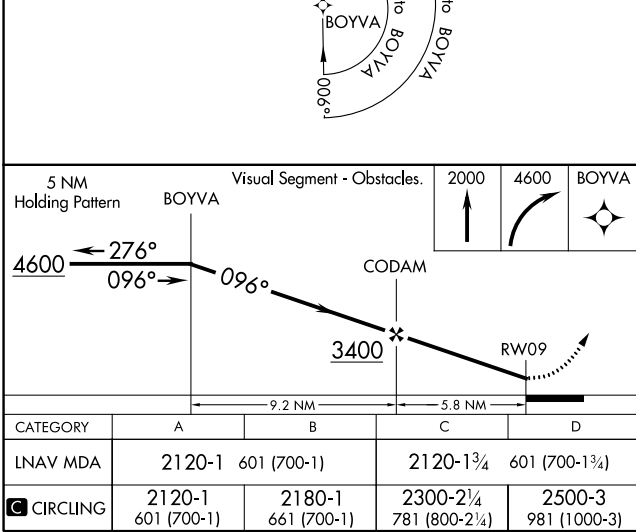
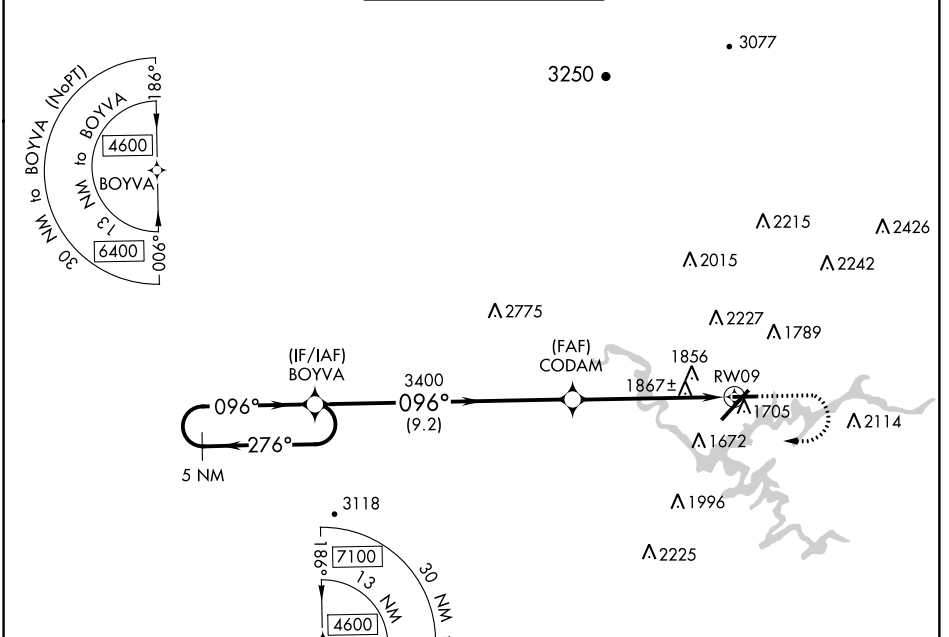
# RNAV (GPS) RWY 9

TRI-CITIES (TRI)

**⚠** Circling NA NW of Rwy 9 and 23. Rwy 9 helicopter visibility reduction below 1 SM NA. DME/DME RNP-0.3 NA. Straight-in Rwy 9 NA at night, Circling Rwy 9 NA at night.

**⚠** MISSED APPROACH: Climb to 2000 then climbing right turn to 4600 direct BOYVA and hold.

ATIS <b>118.25</b>	TRI-CITY APP CON ★ <b>134,425 349.0</b>	TRI-CITY TOWER ★ <b>119.5 (CTAF) 257.8</b>	GND CON <b>121.7 348.6</b>	UNICOM <b>122.95</b>
-----------------------	--------------------------------------------	-----------------------------------------------	-------------------------------	-------------------------



SE-1, 10 OCT 2019 to 07 NOV 2019

SE-1, 10 OCT 2019 to 07 NOV 2019