

HI-ILS or LOC Z RWY 12

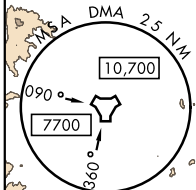
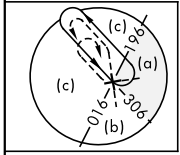
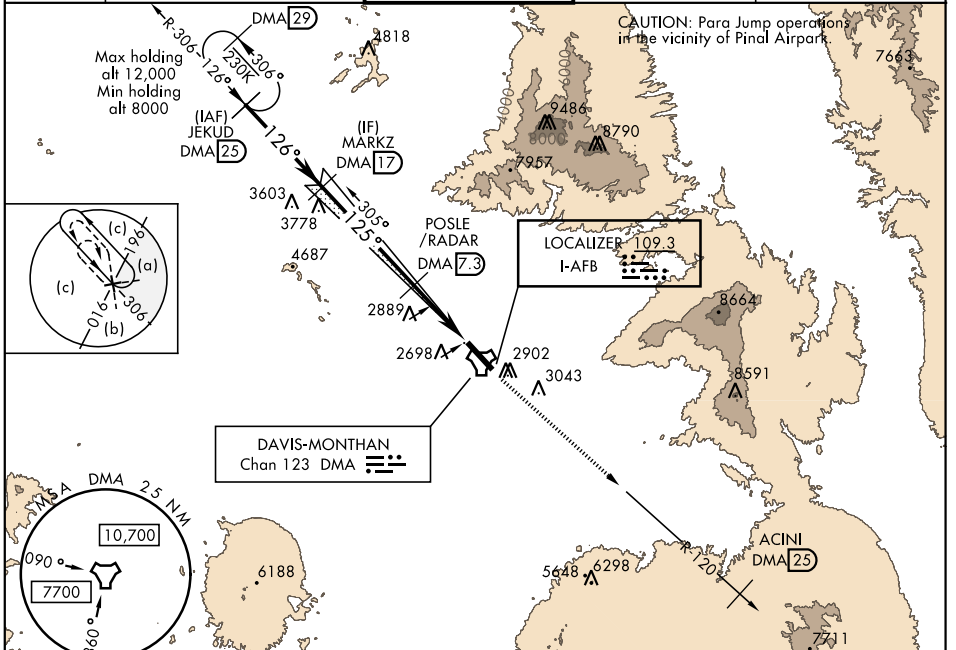
LOC I-AFB 109.3	APCH CRS 125°	Rwy Idg 13,643 TDZE 2615 Arprt Elev 2704
---------------------------	-------------------------	---

JAL-429 [USAF]

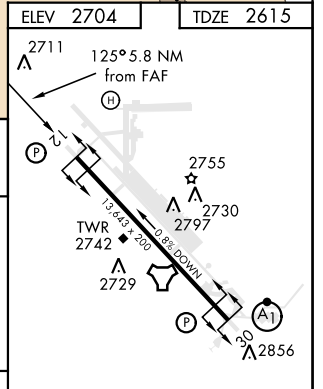
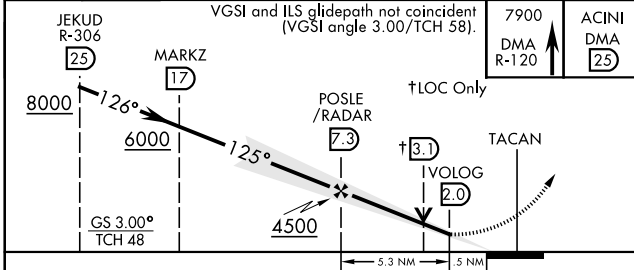
DAVIS-MONTHAN AFB (KDMA)

* Circling not authorized S of Rwy 12-30.		MISSED APPROACH: Climbing to 7900 intercept DMA TACAN R-120 to ACINI. Expect RADAR vectors.		
---	--	---	--	--

ATIS★ 270.1	TUCSON APP CON 066°-274° 119.4 318.1 275°-065° 125.1 269.55	DAVIS-MONTHAN TOWER 118.85 253.5	GND CON 121.8 275.8	CLNC DEL 121.8 275.8
-----------------------	---	--	-------------------------------	--------------------------------



RADAR or DME REQUIRED
EMERG SAFE ALT 100-NM 17,200



CATEGORY	C	D	E
S-ILS 12		2865/40 250 (200-¾)	
S-LOC 12		3160-1½ 545 (500-1½)	
CIRCLING *	3320-1¾ 616 (700-1¾)	3360-2 656 (700-2)	3440-2½ 736 (800-2½)

REIL Rwy 12	FAF to MAP 5.3 NM					
HIRL Rwy 12-30						
	Knots	120	140	160	180	200
	Min:Sec	2:39	2:16	1:59	1:46	1:35

HI-ILS or LOC Z RWY 12

SW-4, 10 OCT 2019 to 07 NOV 2019

SW-4, 10 OCT 2019 to 07 NOV 2019