

TUCSON, ARIZONA

# HI-ILS or LOC Z RWY 30

LOC I-DMA <b>109.3</b>	APCH CRS <b>305°</b>	Rwy Idg <b>13,643</b> TDZE <b>2704</b> Arpt Elev <b>2704</b>
---------------------------	-------------------------	--

JAL-429 [USAF]

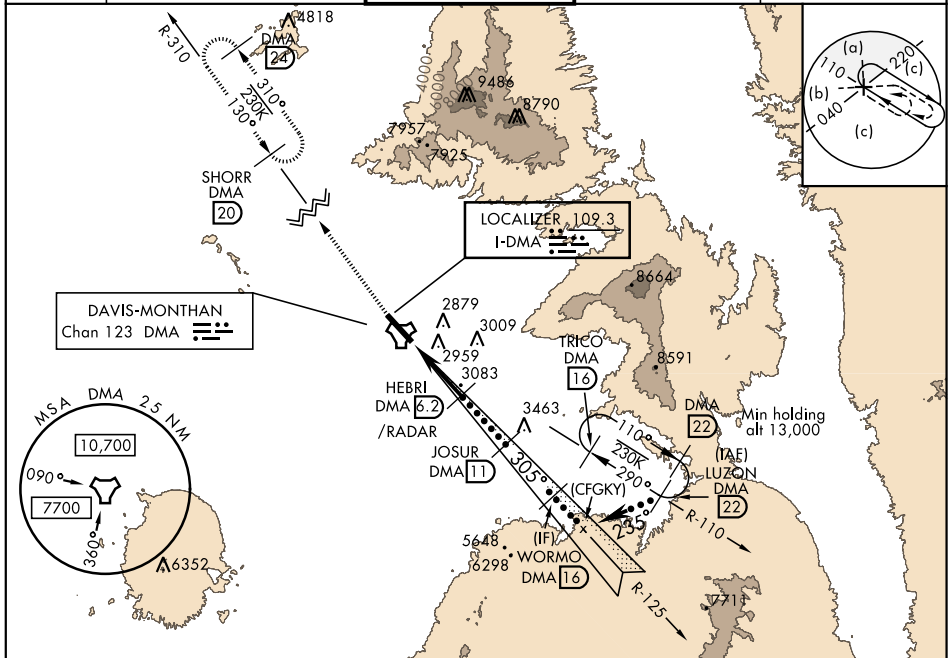
DAVIS-MONTHAN AFB (KDMA)

▼ \* When ALS inop, increase vis to 1 3/4 miles.  
\*\* Circling not authorized S of Rwy 12-30.



MISSED APPROACH: Climb to 7200, intercept DMA TACAN R-310 to SHORR and hold.

ATIS ★ <b>270.1</b>	TUCSON APP CON 066°-274° <b>119.4 318.1</b> 275°-065° <b>125.1 269.55</b>	DAVIS-MONTHAN TOWER <b>118.85 253.5</b>	GND CON <b>121.8 275.8</b>	CLNC DEL <b>121.8 275.8</b>
------------------------	---	--	-------------------------------	--------------------------------

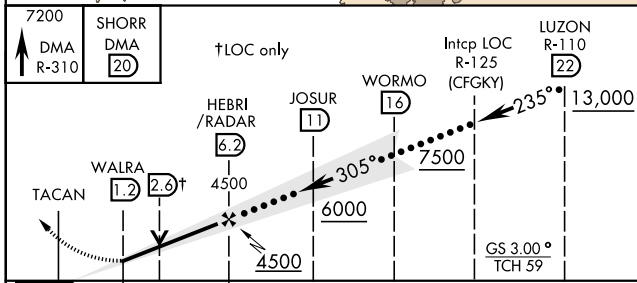


SW-4, 10 OCT 2019 to 07 NOV 2019

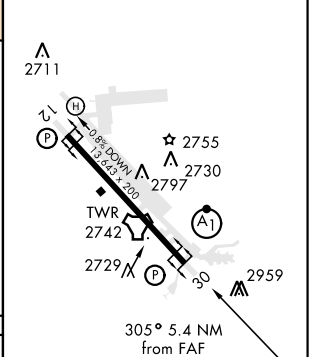
SW-4, 10 OCT 2019 to 07 NOV 2019

## RADAR or DME REQUIRED

EMERG SAFE ALT 100 NM 17,200



ELEV 2704	TDZE 2704
-----------	-----------



CATEGORY	C	D	E
S-ILS 30	2954/40	250	(300-3/4)
S-LOC 30 *	3340-1 3/4	636	(700-1 3/4)
CIRCLING **	3340-1 3/4 636 (700-1 3/4)	3360-2 656 (700-2)	3440-2 1/2 736 (800-2 1/2)

REIL Rwy 12	120	140	160	180	200
HIRL Rwy 12-30	2:30	2:09	1:53	1:40	1:30
FAF to MAP 5 NM					
Knots	120	140	160	180	200
Min:Sec	2:30	2:09	1:53	1:40	1:30

TUCSON, ARIZONA

32°10'N-110°53'W

DAVIS-MONTHAN AFB (KDMA)

Amtd 8 28MAR19

# HI-ILS or LOC Z RWY 30