

HI-TACAN Z RWY 30

TACAN DMA Chan 123	APCH CRS 299°	Rwy Idg 13,643 TDZE 2704 Arprt Elev 2704
------------------------------	-------------------------	---

JAL-429 [USAF]

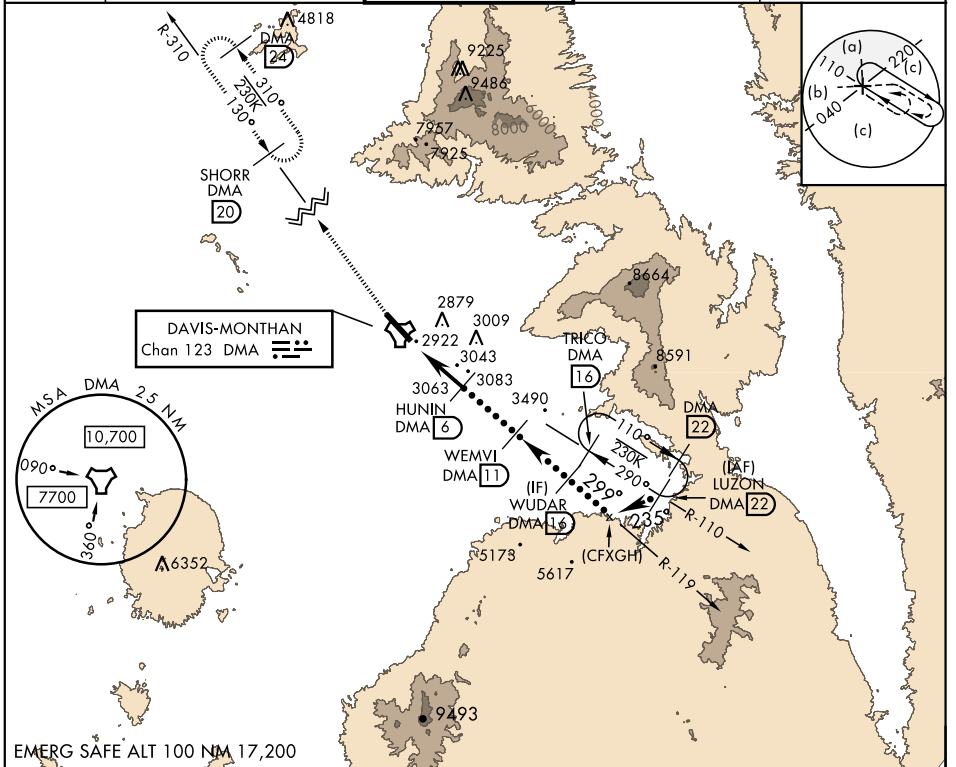
DAVIS-MONTHAN AFB (KDMA)

▼ * When ALS inop, increase vis to 1½ miles.
** Circling not authorized S of Rwy 12-30.



MISSED APPROACH: Climb to 7200, intercept DMA TACAN R-310 to SHORR and hold.

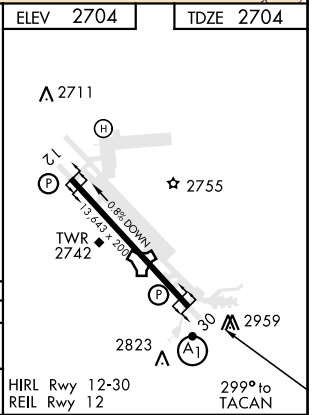
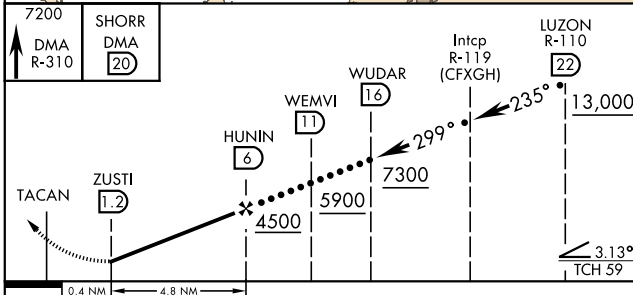
ATIS ★ 270.1	TUCSON APP CON 066°-274° 119.4 318.1 275°-065° 125.1 269.55	DAVIS-MONTHAN TOWER 118.85 253.5	GND CON 121.8 275.8	CLINC DEL 121.8 275.8
------------------------	---	--	-------------------------------	---------------------------------



SW-4, 10 OCT 2019 to 07 NOV 2019

SW-4, 10 OCT 2019 to 07 NOV 2019

EMERG SAFE ALT 100 NM 17,200



CATEGORY	C	D	E
S-30 *	3340-1¾	636 (700-1¾)	
CIRCLING **	3340-1¾ 636 (700-1¾)	3360-2 656 (700-2)	3440-2½ 736 (800-2½)

HI-TACAN Z RWY 30