

TUCSON, ARIZONA

TACAN Y RWY 12

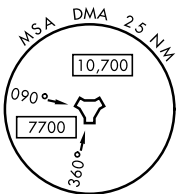
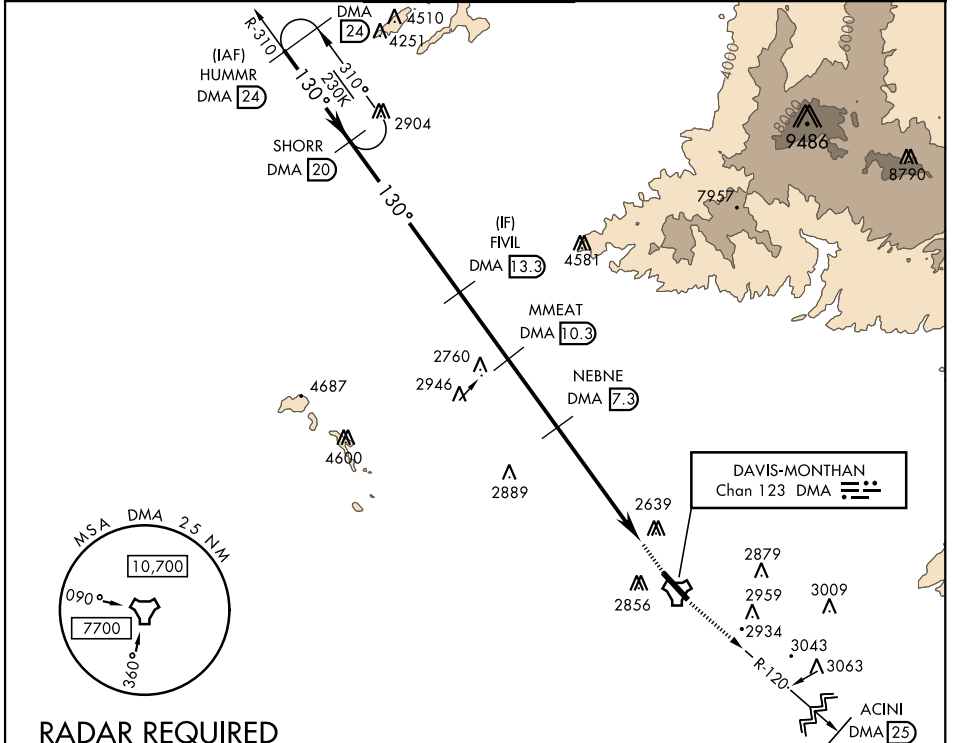
TACAN DMA Chan 123	APCH CRS 130°	Rwy ldg 13,643 TDZE 2615 Arprt Elev 2704
---------------------------	----------------------	---

AL-429 [USAF]

DAVIS-MONTHAN AFB (KDMA)

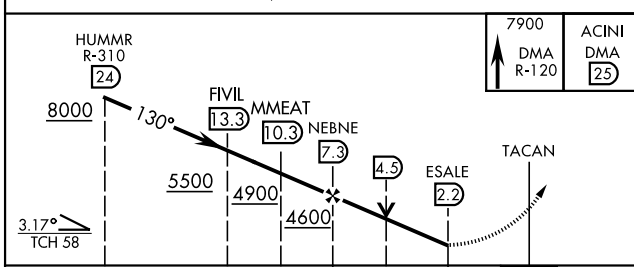
<p>▼ * Circling not authorized S of Rwy 12-30.</p>		<p>MISSED APPROACH: Climbing to 7900 intercept DMA TACAN R-120 to ACINI. Expect RADAR vectors.</p>		
--	--	--	--	--

<p>ATIS ★ 270.1</p>	<p>TUCSON APP CON 090°-285° 125.1 269.55 286°-089° 119.4 318.1</p>	<p>DAVIS-MONTHAN TOWER 118.85 253.5</p>	<p>GND CON 121.8 275.8</p>	<p>CLNC DEL 121.8 275.8</p>
----------------------------	--	--	---------------------------------------	--

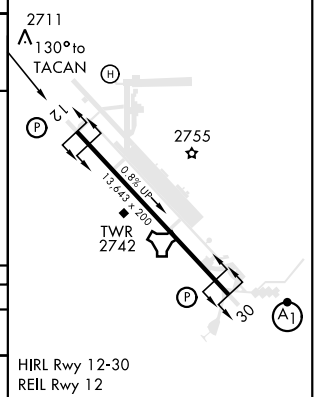


RADAR REQUIRED

EMERG SAFE ALT 100 NM 17,200



ELEV 2704	TDZE 2615
-----------	-----------



CATEGORY	A	B	C	D	E
S-12	3600/60 985 (900-1¼)	3600-1½ 985 (900-1½)	3600-3	985	(900-3)
CIRCLING*	3600-1¼ 896 (900-1¼)	3600-1½ 896 (900-1½)	3600-3 896 (900-3)		

HIRL Rwy 12-30
REIL Rwy 12

TUCSON, ARIZONA
Amdt 8 28MAR19

32°10'N-110°53'W

DAVIS-MONTHAN AFB (KDMA)

TACAN Y RWY 12

SW-4, 10 OCT 2019 to 07 NOV 2019

SW-4, 10 OCT 2019 to 07 NOV 2019