

LOC I-YNG <b>110.1</b>	APP CRS <b>323°</b>	Rwy Idg TDZE Apt Elev	<b>9003</b> <b>1186</b> <b>1192</b>
---------------------------	------------------------	-----------------------------	---

# ILS or LOC RWY 32

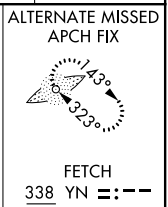
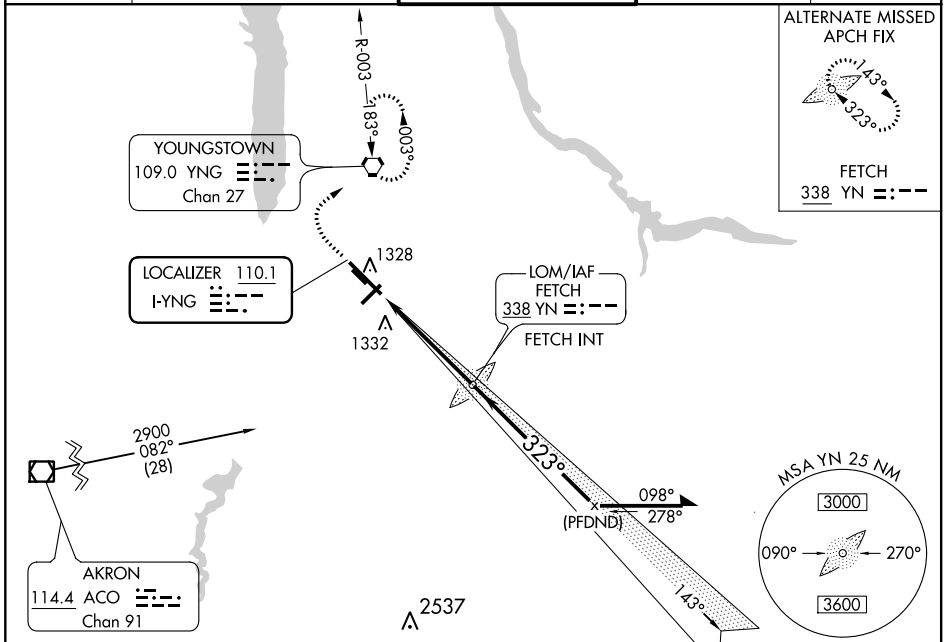
YOUNGSTOWN-WARREN RGNL (YNG)

**ASR** Circling Rwy 5 NA at night.  
\*RVR 1800 authorized with the use of FD or AP or HUD to DA.

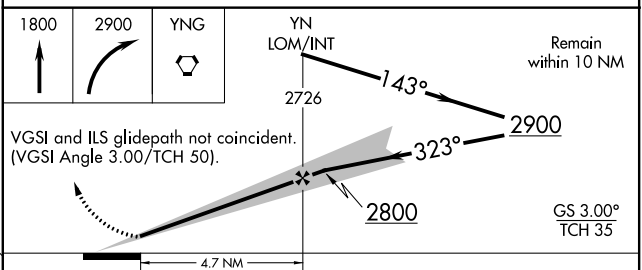
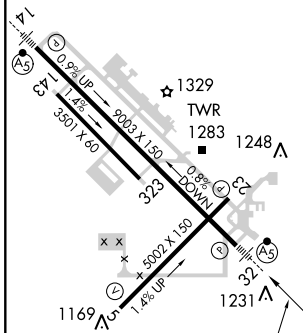
**MALSR**

**MISSED APPROACH:** Climb to 1800 then climbing right turn to 2900 direct YNG VORTAC and hold, continue climb-in-hold to 2900.

ATIS <b>123.75</b>	YOUNGSTOWN APP CON * <b>133.95 322.3</b>	YOUNGSTOWN TOWER <b>119.5 263.0</b>	GND CON <b>121.9 275.8</b>	CLNC DEL <b>118.25</b>
-----------------------	---	--	-------------------------------	---------------------------



ELEV 1192	<b>D</b>	TDZE 1186
-----------	----------	-----------



CATEGORY	A	B	C	D
S-ILS 32*	1386/24		200 (200-½)	
S-LOC 32	1640/24	454 (500-½)	1640/45	454 (500-¾)
<b>C</b> CIRCLING	1640-1 448 (500-1)	1660-1 468 (500-1)	1740-1½ 548 (600-1½)	1760-2 568 (600-2)

YOUNGSTOWN-WARREN, OHIO  
Amdt 27C 25APR19

41°16'N-80°41'W

# YOUNGSTOWN-WARREN RGNL (YNG)

## ILS or LOC RWY 32

EC-2, 10 OCT 2019 to 07 NOV 2019

EC-2, 10 OCT 2019 to 07 NOV 2019