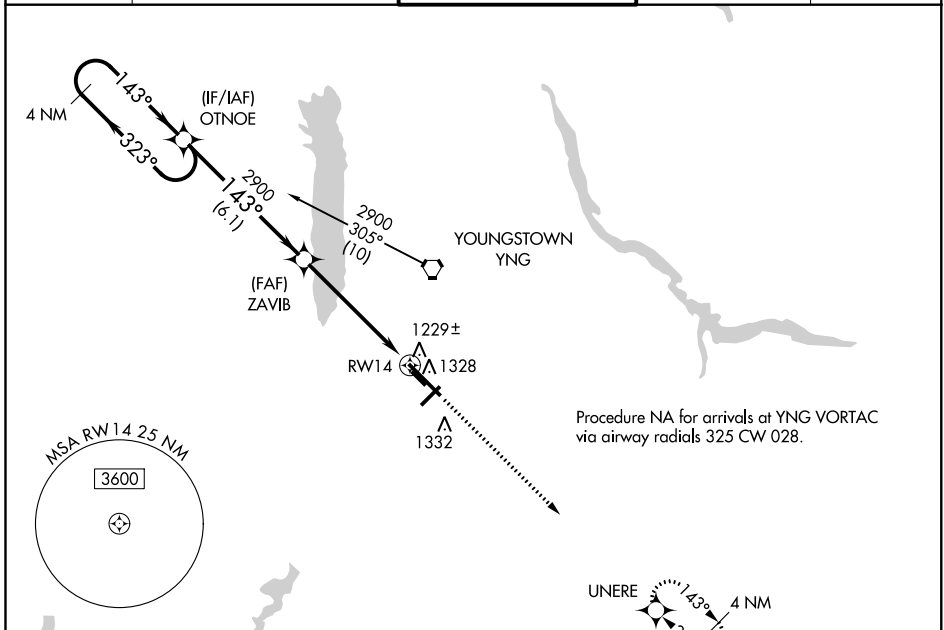


|  |                        |   |
|--|------------------------|---|
| WAAS<br>CH <b>49205</b><br><b>W14A</b> | APP CRS<br><b>143°</b> | Rwy Idg <b>9003</b><br>TDZE <b>1134</b><br>Apt Elev <b>1192</b> |
|--|------------------------|---|

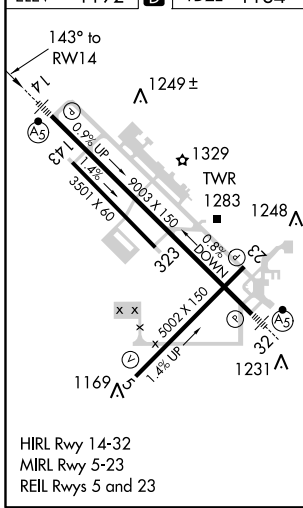
# RNAV (GPS) RWY 14

YOUNGSTOWN-WARREN RGNL (YNG)

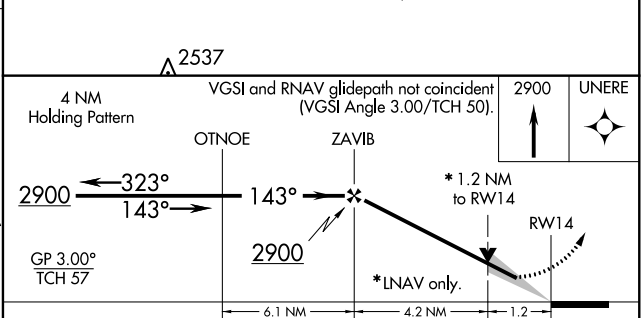
|   |   |  |   |                           |
|---|---|--|---|---------------------------|
| RNP APCH.<br>For inop ALS, increase LPV all Cats visibility to RVR 5000 and LNAV Cat D visibility to RVR 6000. For uncompensated Baro-VNAV systems, LNAV/VNAV NA below -17°C or above 46°C. Circling Rwy 5 NA at night. |   | MALSRS<br>                             | MISSED APPROACH: Climb to 2900 direct UNERE and hold. |                           |
| ATIS<br><b>123.75</b>   | YOUNGSTOWN APP CON *<br><b>133.95 322.3</b> | YOUNGSTOWN TOWER<br><b>119.5 263.0</b> | GND CON<br><b>121.9 275.8</b>                         | CLNC DEL<br><b>118.25</b> |



|           |          |           |
|-----------|----------|-----------|
| ELEV 1192 | <b>D</b> | TDZE 1134 |
|-----------|----------|-----------|



HIRL Rwy 14-32  
MIRL Rwy 5-23  
REIL Rws 5 and 23



| CATEGORY          | A                     | B                     | C                             | D                      |
|-------------------|-----------------------|-----------------------|-------------------------------|------------------------|
| LPV DA            |                       | 1384/24               | 250 (200-1/2)                 |                        |
| LNAV/ VNAV DA     |                       | 1499/40               | 365 (400-3/4)                 |                        |
| LNAV MDA          | 1540/24               | 406 (400-1/2)         | 1540/40<br>406 (400-3/4)      | 1540/50<br>406 (400-1) |
| <b>C</b> CIRCLING | 1640-1<br>448 (500-1) | 1660-1<br>468 (500-1) | 1740-1 1/2<br>548 (600-1 1/2) | 1760-2<br>568 (600-2)  |

EC-2, 10 OCT 2019 to 07 NOV 2019

EC-2, 10 OCT 2019 to 07 NOV 2019