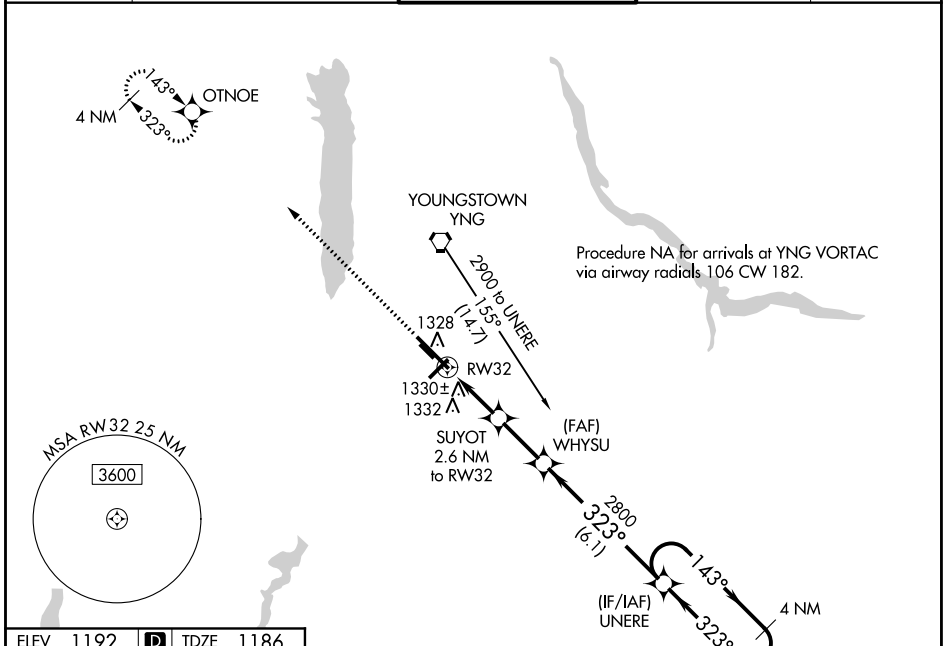


WAAS CH <b>97406</b> <b>W32A</b>	APP CRS <b>323°</b>	Rwy Idg TDZE Apt Elev	<b>9003</b> <b>1186</b> <b>1192</b>
--	------------------------	-----------------------------	---

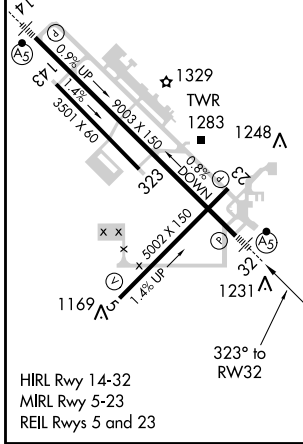
# RNAV (GPS) RWY 32

YOUNGSTOWN-WARREN RGNL (YNG)

RNP APCH. ▼ For uncompensated Baro-VNAV systems, LNAV/VNAV NA below -17°C or above 46°C. For inop ALS, increase LPV all Cats visibility to RVR 5000 and LNAV Cat D visibility to RVR 6000. Circling Rwy 5 NA at night. ASR		MALSR 	MISSED APPROACH: Climb to 2900 direct OTNOE and hold.	
ATIS <b>123.75</b>	YOUNGSTOWN APP CON * <b>133.95 322.3</b>	YOUNGSTOWN TOWER <b>119.5 263.0</b>	GND CON <b>121.9 275.8</b>	CLNC DEL <b>118.25</b>



ELEV 1192	<b>D</b> TDZE 1186
-----------	--------------------



YOUNGSTOWN-WARREN, OHIO  
Orig-D 25APR19

A 2537		2900 OTNOE		VGSi and RNAV glidepath not coincident (VGSi Angle 3.00/TCH 50).		4 NM Holding Pattern	
*LNAV only		SUYOT 2.6 NM to RW32		WHYSU 2800		UNERE	
RW32		*1.1 NM to RW32		*2040		*2800	
1.1		1.5		2.3 NM		6.1 NM	
CATEGORY	A	B	C	D			
LPV DA	1458/24		272 (300-½)				
LNAV/VNAV DA	1639/60		453 (500-1½)				
LNAV MDA	1580/24		394 (400-½)		1580/50		394 (400-1)
<b>C</b> CIRCLING	1640-1 448 (500-1)	1660-1 468 (500-1)	1740-1½ 548 (600-1½)	1760-2 568 (600-2)			

# YOUNGSTOWN-WARREN RGNL (YNG)

## RNAV (GPS) RWY 32

41°16'N-80°41'W

EC-2, 10 OCT 2019 to 07 NOV 2019

EC-2, 10 OCT 2019 to 07 NOV 2019