

LOC/DME I-LSW 109.5 Chan 32	APP CRS 233°	Rwy Idg 5596 7543 TDZE 712 710 Apt Elev 716 716
-------------------------------------------------	------------------------	-------------------------------------------------------------------------------------

ILS or LOC RWY 23L

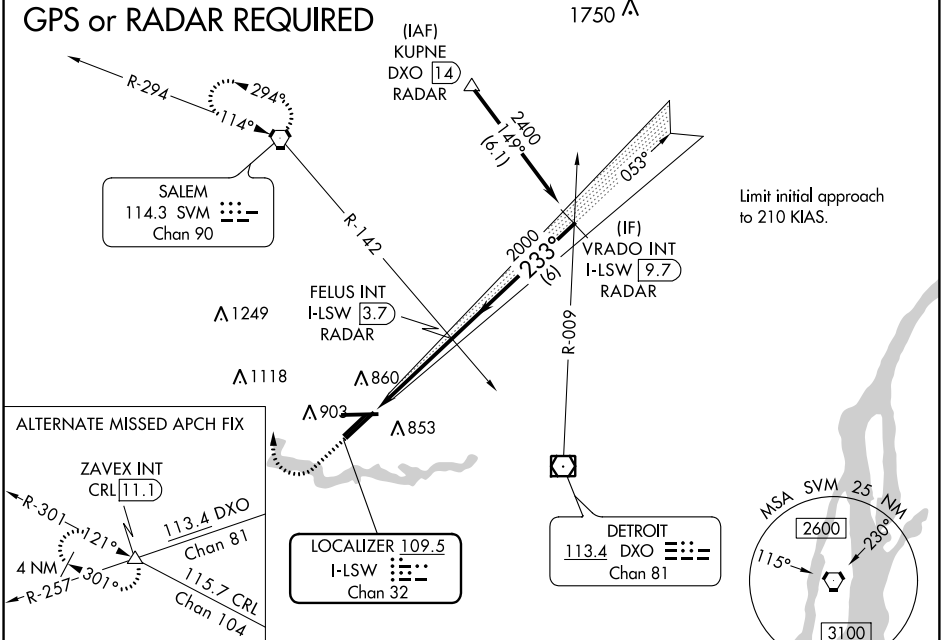
WILLOW RUN (YIP)

⚠ Inoperative table does not apply to S-ILS 23L.
⚠ For inoperative MALSR, increase S-LOC 23L Cat A/B visibility to 1 mile.
 Helicopter visibility reduction below 3/4 SM NA.

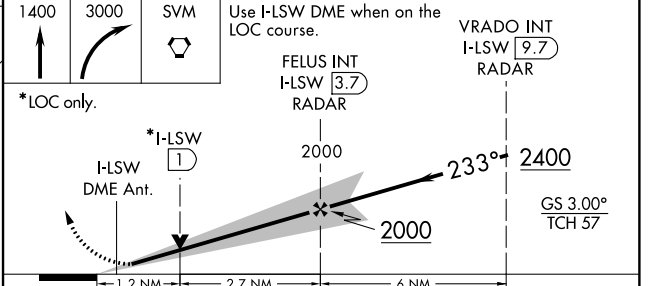
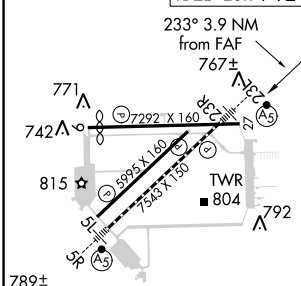
MALSR MISSED APPROACH: Climb to 1400 then dimming right turn to 3000 direct SVM VORTAC and hold.

ATIS 127.425	DETROIT APP CON 118.95 284.0	WILLOW RUN TOWER 125.275 256.9	GND CON 119.975
------------------------	----------------------------------------	------------------------------------------	---------------------------

GPS or RADAR REQUIRED



ELEV 716	D TDZE 23L 710 TDZE 23R 712
----------	---------------------------------------



TDZ/CL Rwy 5R HIRL Rwy 5R-23L MIRL Rwys 5L-23R, and 9-27 FAF to MAP 3.9 NM				
	1400	3000	SVM	Use I-LSW DME when on the LOC course.
	*LOC only.			
	I-LSW DME Ant.	*I-LSW 1	2000	2000
	1.2 NM	2.7 NM	6 NM	
	233°	2400		GS 3.00% TCH 57
CATEGORY	A	B	C	D
S-ILS 23L		960-3/4	250 (300-3/4)	
S-LOC 23L		1140-3/4	430 (500-3/4)	
SIDESTEP RWY 23R	1140-1	428 (500-1)	1140-1 1/2 428 (500-1 1/2)	1140-2 428 (500-2)
C CIRCLING	1220-1	504 (600-1)	1220-1 1/2 504 (600-1 1/2)	1400-2 1/4 684 (700-2 1/4)

WILLOW RUN (YIP)

ILS or LOC RWY 23L

EC-1, 10 OCT 2019 to 07 NOV 2019

EC-1, 10 OCT 2019 to 07 NOV 2019