

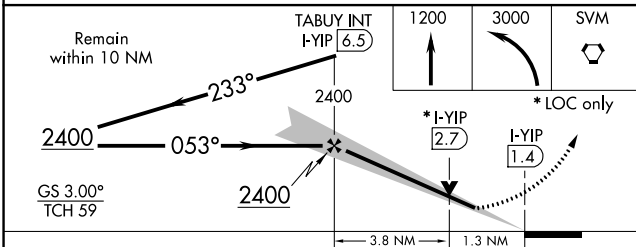
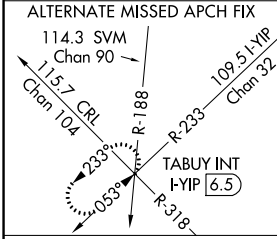
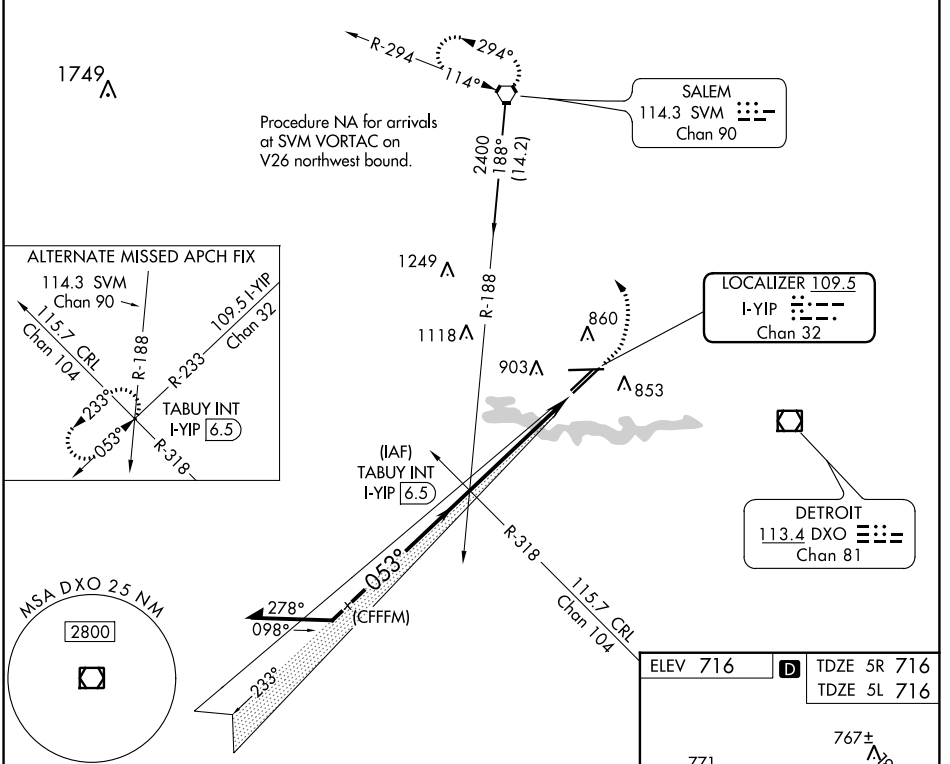
LOC/DME I-YIP 109.5 Chan 32	APP CRS 053°	Rwy Idg 5R 5L TDZE 716 716 Apt Elev 716 716
--	------------------------	---

ILS or LOC RWY 5R

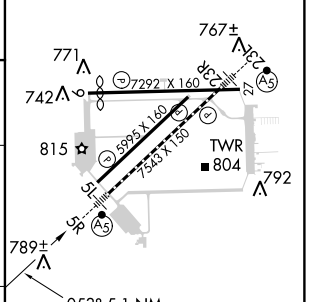
WILLOW RUN (YIP)

<p>⚠ Circling to Rwy 9 NA at night. For inop ALS, increase S-LOC 5R Cat C/D visibility to 1 3/8 SM.</p>	<p>MALSR </p>	<p>MISSED APPROACH: Climb to 1200 then climbing left turn to 3000 direct SVM VORTAC and hold.</p>
--	-------------------	--

ATIS 127.425	DETROIT APP CON 118.95 284.0	WILLOW RUN TOWER 125.275 256.9	GND CON 119.975
------------------------	--	--	---------------------------



ELEV 716	TDZE 5R 716	TDZE 5L 716
----------	-------------	-------------



CATEGORY	A	B	C	D
S-ILS 5R	916/18 200 (200-1/2)			
S-LOC 5R	1200/24	484 (500-1/2)	1200/50	484 (500-1)
SIDESTEP RWY 5L	1240-1	524 (600-1)	1240-1 1/2	1240-2
CIRCLING	1220-1	504 (600-1)	1220-1 1/2	1400-2 1/4
			504 (600-1 1/2)	684 (700-2 1/4)

FDZ/CL Rwy 5R					
HIRL Rwy 5R-23L					
MIRL Rwsy 5L-23R, and 9-27					
FAF to MAP 5.1 NM					
Knots	60	90	120	150	180
Min:Sec	5:06	3:24	2:33	2:02	1:42

EC-1, 10 OCT 2019 to 07 NOV 2019

EC-1, 10 OCT 2019 to 07 NOV 2019