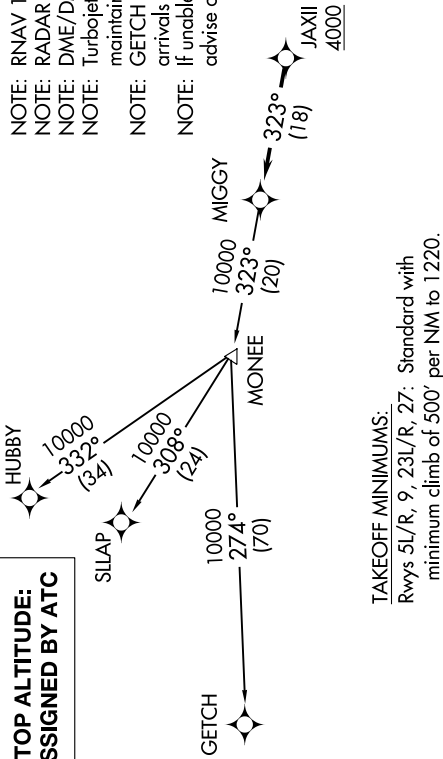


EC-1, 10 OCT 2019 to 07 NOV 2019

**TOP ALTITUDE:  
ASSIGNED BY ATC**

ATIS  
127.425  
GND CON  
119.975  
WILLOW RUN TOWER  
125.275 256.9  
DETROIT DEP CON  
118.95 284.0

- NOTE: RNAV 1.
- NOTE: RADAR required.
- NOTE: DME/DME/IRU or GPS required.
- NOTE: Turbojet departures at/above 10000, maintain 280K until advised by ATC.
- NOTE: GETCH TRANSITION: For use by KMIKE area arrivals only, or as assigned by ATC.
- NOTE: If unable to accept 500' per NM climb rate, advise clearance delivery on initial contact.



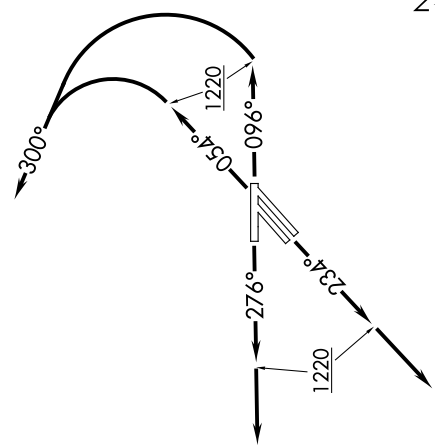
**TAKEOFF MINIMUMS:**

Rwys 5L/R, 9, 23L/R, 27: Standard with minimum climb of 500' per NM to 1220.

**DEPARTURE ROUTE DESCRIPTION**

TAKEOFF RUNWAYS 5L/R: Climb on heading 054° to 1220, then left turn heading 300° for RADAR vectors to cross JAXII at or above 4000, thence...  
 TAKEOFF RUNWAY 9: Climb on heading 096° to 1220, then left turn heading 300° for RADAR vectors to cross JAXII at or above 4000, thence...  
 TAKEOFF RUNWAYS 23L/R: Climb on heading 234° to 1220, then on heading 234° for RADAR vectors to cross JAXII at or above 4000, thence...  
 TAKEOFF RUNWAY 27: Climb on heading 276° to 1220, then on heading 276° for RADAR vectors to cross JAXII at or above 4000, thence...  
 ...on track 323° to MIGGY, then on (transition). Maintain ATC assigned altitude, expect filed altitude 10 minutes after departure.

- GETCH TRANSITION (MIGGY2.GETCH):
- HUBBY TRANSITION (MIGGY2.HUBBY):
- SILAP TRANSITION (MIGGY2.SILAP):



NOTE: Chart not to scale.

EC-1, 10 OCT 2019 to 07 NOV 2019