

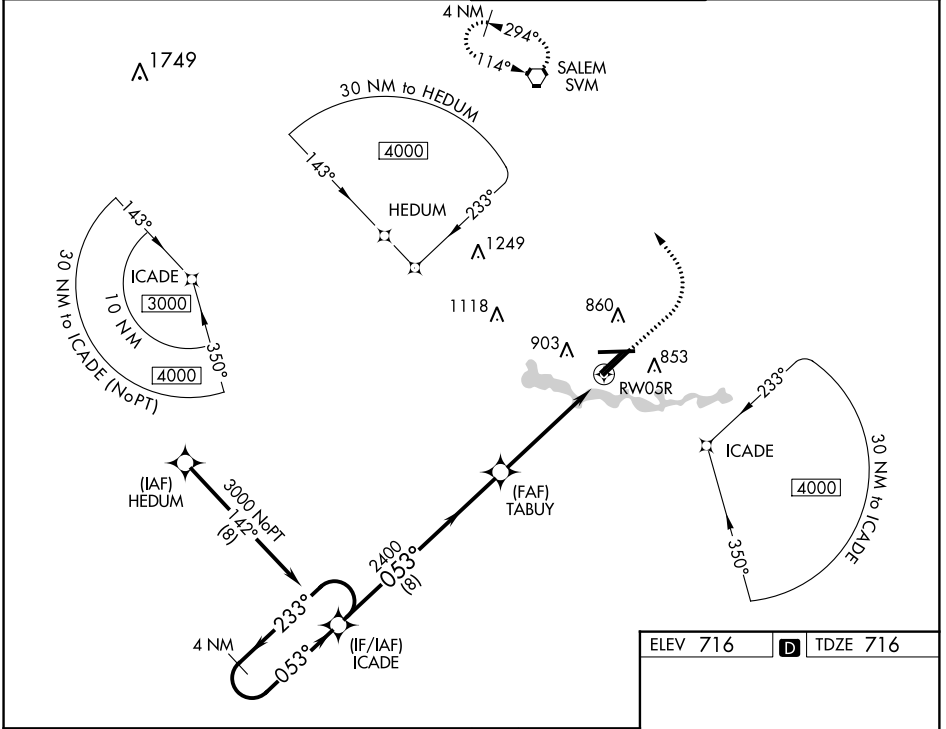
WAAS CH 97718 W05A	APP CRS 053°	Rwy Idg TDZE Apt Elev	7543 716 716
--	------------------------	-----------------------------	---

RNAV (GPS) RWY 5R

WILLOW RUN (YIP)

<p>⚠ Circling to Rwy 9 NA at night. For uncompensated Baro-VNAV systems, LNAV/VNAV NA below -18°C (0°F) or above 54°C (130°F). DME/DME RNP-0.3 NA. For inop ALS, increase LNAV Cat C/D visibility to 1½ SM.</p>	<p>MALSRL</p>	<p>MISSED APPROACH: Climb to 1200 then climbing left turn to 3000 direct SVM VORTAC and hold.</p>
	<p>AS</p>	

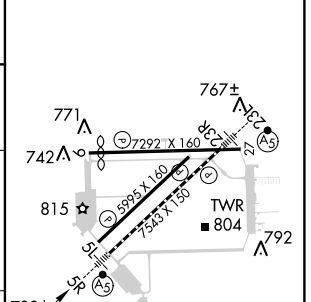
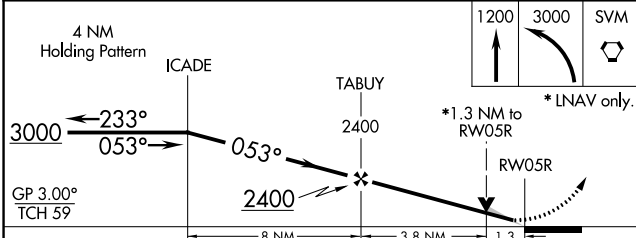
ATIS 127.425	DETROIT APP CON 118.95 284.0	WILLOW RUN TOWER 125.275 256.9	GND CON 119.975
------------------------	--	--	---------------------------



EC-1, 10 OCT 2019 to 07 NOV 2019

EC-1, 10 OCT 2019 to 07 NOV 2019

ELEV 716	D TDZE 716
----------	-------------------



CATEGORY	A	B	C	D
LPV DA	916/18		200 (200-½)	
LNAV/VNAV DA	1055/30		339 (400-¾)	
LNAV MDA	1200/24 484 (500-½)		1200/50 484 (500-1)	
C CIRCLING	1220-1 504 (600-1)		1220-1½ 504 (600-1½) 1400-2¼ 684 (700-2¼)	

TDZ/CL Rwy 5R	716
HIRL Rwy 5R-23L	716
MIRL Rwy 5L-23R, and 9-27	716