

(ZETTR2.ZETTR) 19227

ZETTR TWO DEPARTURE (RNAV)

AL-467 (FAA)

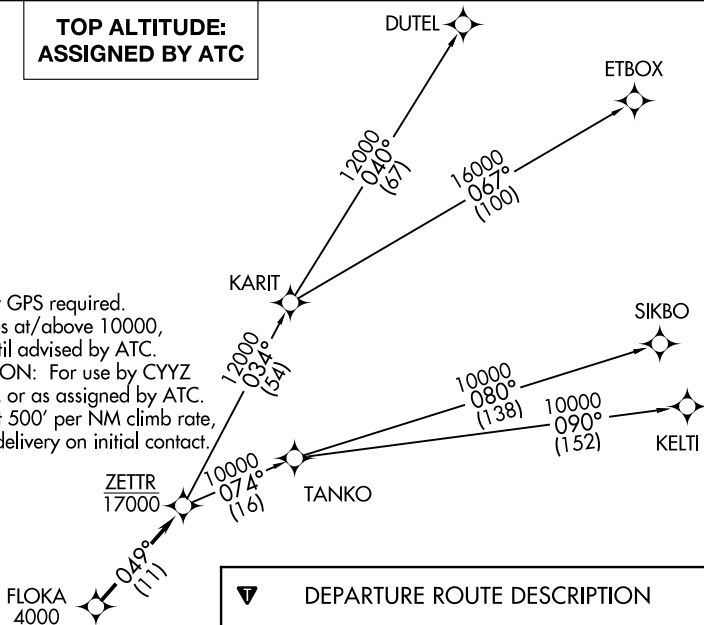
WILLOW RUN (YIP)

DETROIT, MICHIGAN

ATIS
127.425
GND CON
119.975
WILLOW RUN TOWER
125.275 256.9
DETROIT DEP CON
118.95 284.0

**TOP ALTITUDE:
ASSIGNED BY ATC**

- NOTE: RNAV 1.
- NOTE: RADAR required.
- NOTE: DME/DME/IRU or GPS required.
- NOTE: Turbojet departures at/above 10000, maintain 280K until advised by ATC.
- NOTE: TANKO TRANSITION: For use by CYYZ area arrivals only, or as assigned by ATC.
- NOTE: If unable to accept 500' per NM climb rate, advise clearance delivery on initial contact.



DEPARTURE ROUTE DESCRIPTION

- TAKEOFF RUNWAYS 5L/R:** Climb on heading 054° to 1220, then left turn heading 300° for RADAR vectors to cross FLOKA at or above 4000, thence....
- TAKEOFF RUNWAY 9:** Climb on heading 096° to 1220, then left turn heading 300° for RADAR vectors to cross FLOKA at or above 4000, thence....
- TAKEOFF RUNWAYS 23L/R:** Climb on heading 234° to 1220, then on heading 234° for RADAR vectors to cross FLOKA at or above 4000, thence....
- TAKEOFF RUNWAY 27:** Climb on heading 276° to 1220, then on heading 276° for RADAR vectors to cross FLOKA at or above 4000, thence....

....on track 049° to cross ZETTR at or below 17000, then on (transition). Maintain ATC assigned altitude, expect filed altitude 10 minutes after departure.

- DUTEL TRANSITION (ZETTR2.DUTEL):
- ETBOX TRANSITION (ZETTR2.ETBOX):
- KELTI TRANSITION (ZETTR2.KELTI):
- SIKBO TRANSITION (ZETTR2.SIKBO):
- TANKO TRANSITION (ZETTR2.TANKO):

TAKEOFF MINIMUMS:

Rwys 5L/R, 9, 23L/R, 27: Standard with minimum climb of 500' per NM to 1220.

NOTE: Chart not to scale.

ZETTR TWO DEPARTURE (RNAV)
(ZETTR2.ZETTR) 15AUG19

DETROIT, MICHIGAN
WILLOW RUN (YIP)

EC-1, 10 OCT 2019 to 07 NOV 2019

EC-1, 10 OCT 2019 to 07 NOV 2019