

APP CRS	Rwy Idg	<b>6001</b>
<b>302°</b>	TDZE	<b>72</b>
	Apt Elev	<b>79</b>

# RNAV (GPS) RWY 30

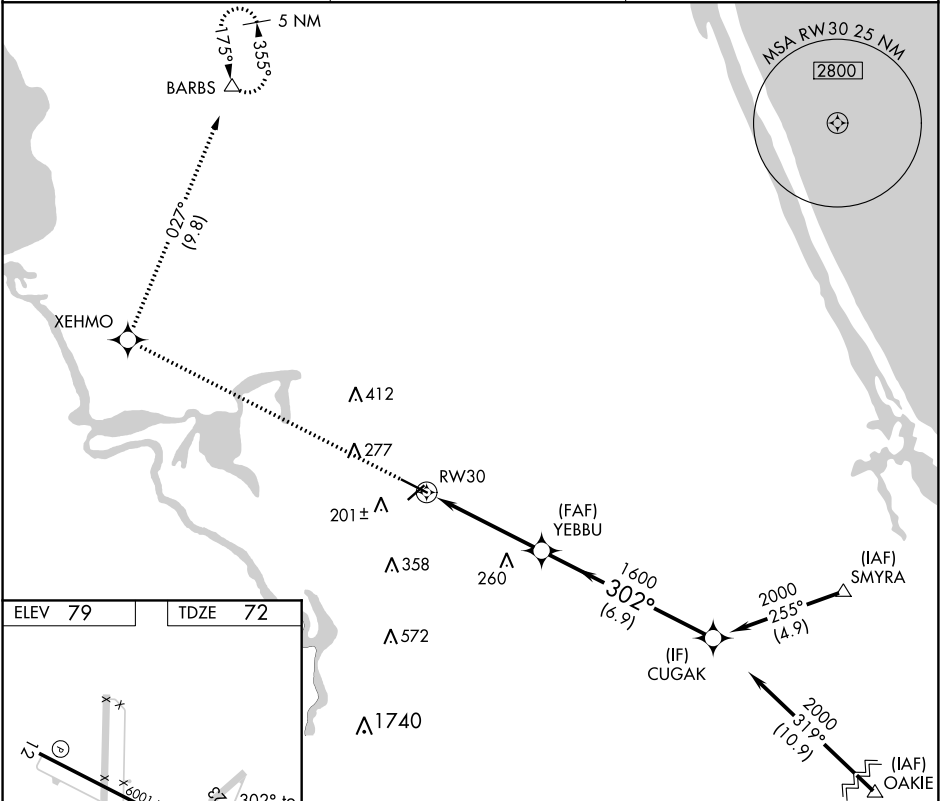
DELAND MUNI-SIDNEY H TAYLOR FIELD (DED)

RNP APCH.

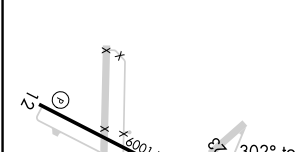
**⚠** Rwy 30 helicopter visibility reduction below 3/4 SM NA. VDP NA when using Daytona Beach Intl altimeter setting. When local altimeter setting not received, use Daytona Beach Intl altimeter setting and increase all MDAs 40 feet.

MISSED APPROACH: Climb to 3000 direct XEHMO and right turn on track 027° direct BARBS and hold.

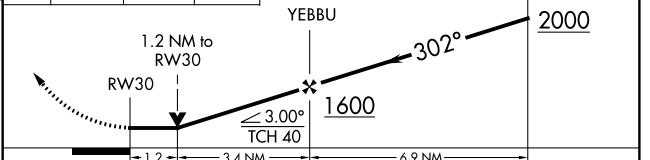
AWOS-3 <b>119.575</b>	DAYTONA APP CON <b>125.35 322.3</b>	UNICOM <b>123.075 (CTAF) 0</b>
--------------------------	--	-----------------------------------



ELEV 79	TDZE 72
---------	---------



3000	XEHMO	BARBS	VGSI and descent angles not coincident (VGSI Angle 3.00/TCH 54).
↑	✧	△	
	tr 027°		



CATEGORY	A	B	C	D
LNAV MDA	500-1	428 (500-1)	500-1¼	428 (500-1¼)

SE-3, 10 OCT 2019 to 07 NOV 2019

SE-3, 10 OCT 2019 to 07 NOV 2019