

APP CRS	Rwy Idg	5000
297°	TDZE	1442
	Apt Elev	1442

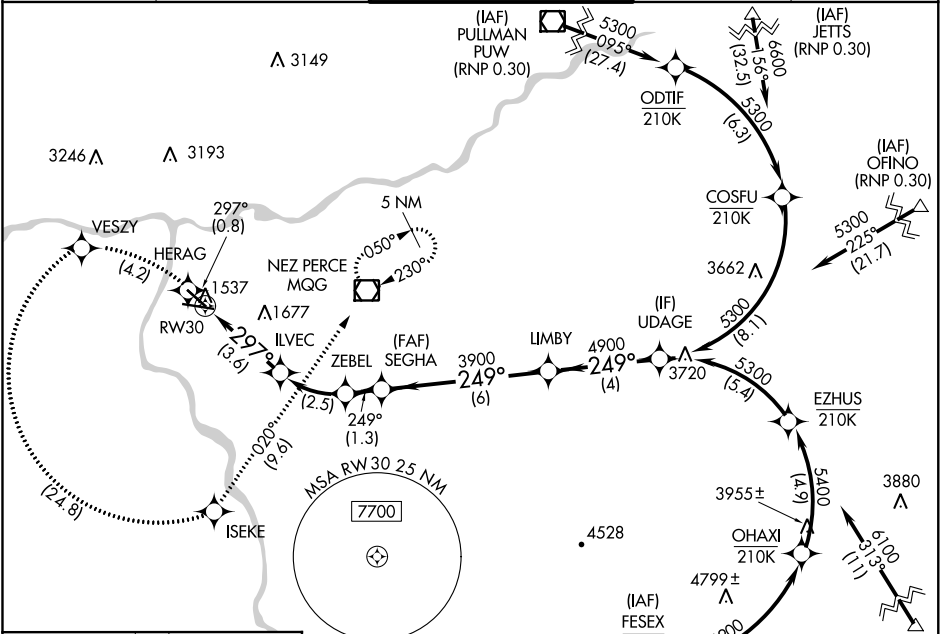
RNAV (RNP) RWY 30

LEWISTON-NEZ PERCE COUNTY (LWS)

GPS and RF Required. For uncompensated Baro-VNAV systems, procedure NA below -16°C (4°F) or above 46°C (114°F). Missed approach requires RNP less than RNP 1.00.

MISSED APPROACH: Climb to 6000 on track 297° to HERAG, left turn to VESZY, left turn to ISEKE and on track 020° to MGG VOR/DME and hold.

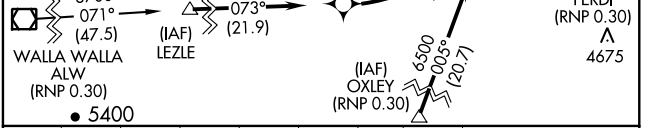
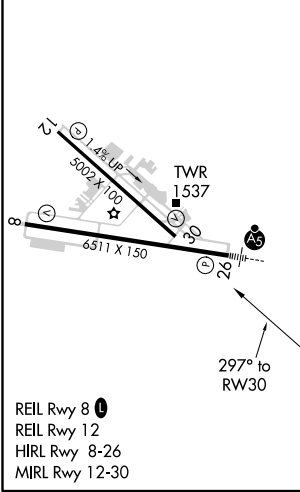
ASOS 135.575	SEATTLE CENTER 123.95 290.55	LEWISTON TOWER ★ 119.4 (CTAF) 318.8	GND CON 121.9	UNICOM 122.95
------------------------	--	---	-------------------------	-------------------------



NW-1, 10 OCT 2019 to 07 NOV 2019

NW-1, 10 OCT 2019 to 07 NOV 2019

ELEV 1442	D	TDZE 1442
-----------	----------	-----------



6000	HERAG	VESZY	ISEKE	MGG	UDAGE	Procedure Turn NA
tr 297°				tr 020°		
	ILVEC	ZEBEL	SEGHA	LIMBY		
	2646	3468	3900	4900	5300	
			3900			GP 3.00° TCH 47
	3.6 NM	2.5 NM	1.3 NM	6 NM	4 NM	

CATEGORY	A	B	C	D
RNP 0.30 DA	1778-1½		336 (400-1½)	

AUTHORIZATION REQUIRED