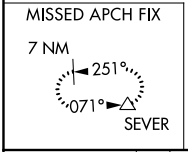
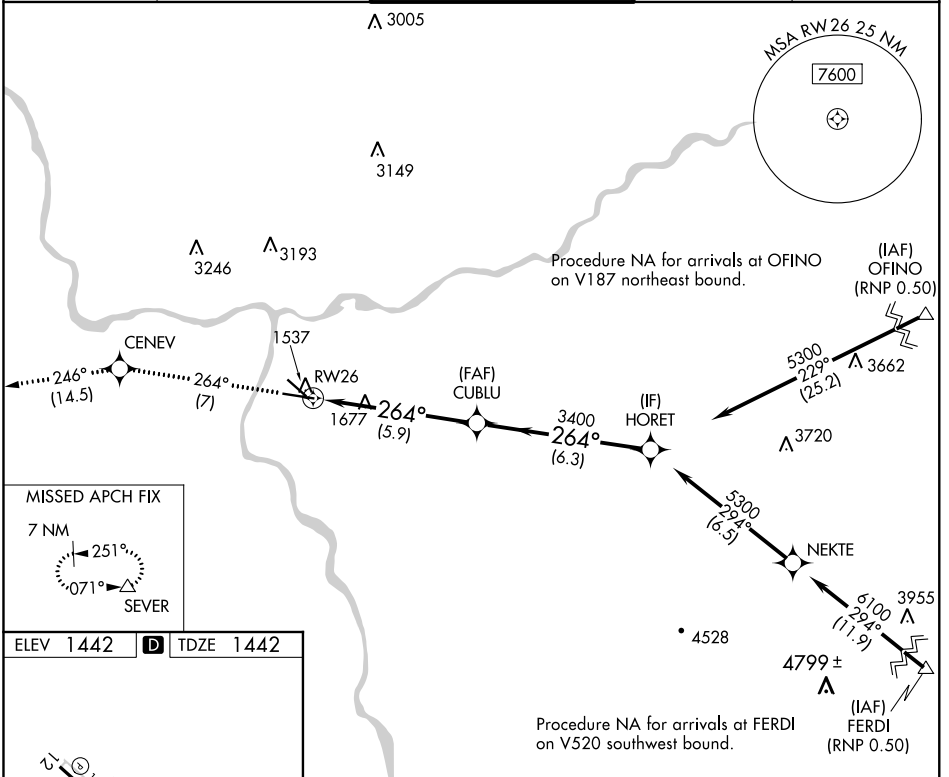


APP CRS	Rwy Idg	<b>6511</b>
<b>264°</b>	TDZE	<b>1442</b>
	Apt Elev	<b>1442</b>

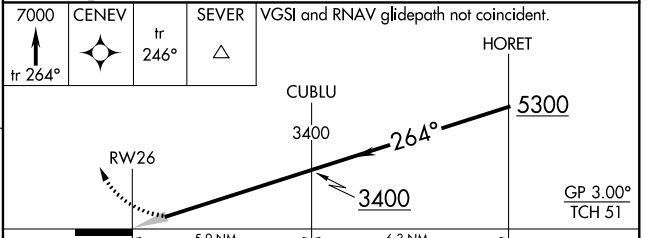
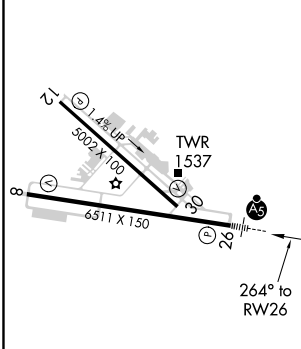
# RNAV (RNP) Z RWY 26

LEWISTON-NEZ PERCE COUNTY (LWS)

<p>For uncompensated Baro-VNAV systems, procedure NA below -16°C (3°F) or above 46°C (115°F). GPS required. For inoperative MALSRS, increase RNP 0.30 visibility all Cats to 1 7/8 miles.</p>	<p>MALSRS</p>	<p>MISSED APPROACH: Climb to 7000 on track 264° to CENEV and on track 246° to SEVER and hold, continue climb-in-hold to 7000.</p>		
		ASOS	SEATTLE CENTER	LEWISTON TOWER ★
<b>135.575</b>	<b>123.95 290.55</b>	<b>119.4 (CTAF) 318.8</b>	<b>121.9</b>	<b>122.95</b>



ELEV	<b>1442</b>	<b>D</b>	TDZE	<b>1442</b>
------	-------------	----------	------	-------------



CATEGORY	A	B	C	D
RNP 0.20 DA		1806-3/4	364 (400-3/4)	
RNP 0.30 DA		2003-1 1/2	561 (600-1 1/2)	

**AUTHORIZATION REQUIRED**

NW-1, 10 OCT 2019 to 07 NOV 2019

NW-1, 10 OCT 2019 to 07 NOV 2019