

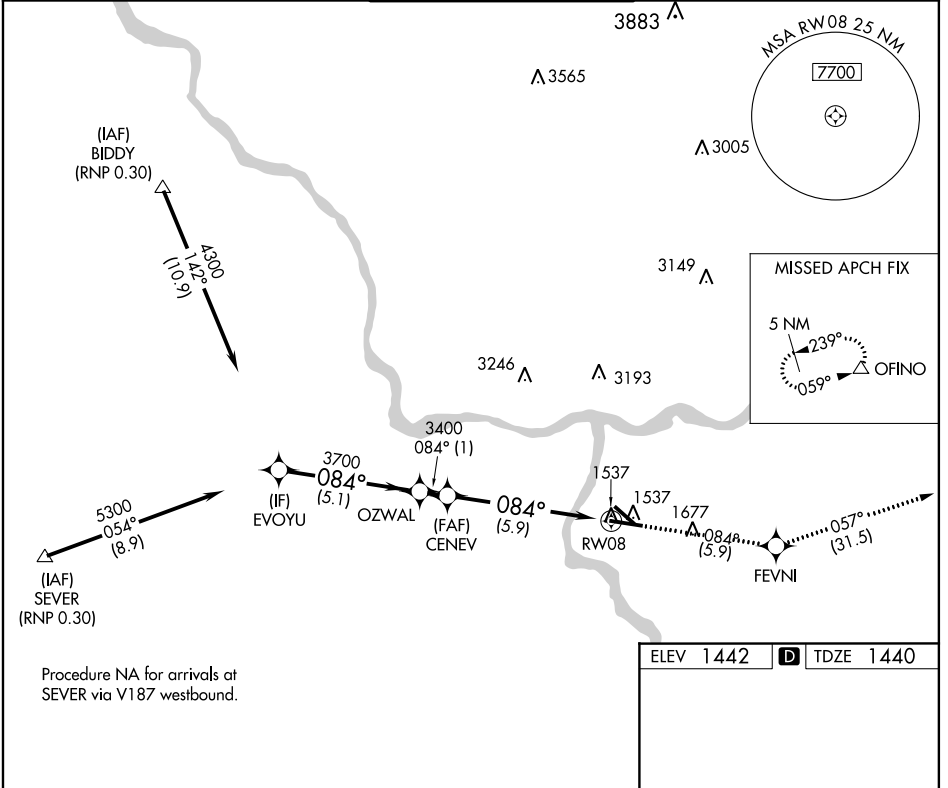
APP CRS	Rwy Idg	6511
084°	TDZE	1440
	Apt Elev	1442

RNAV (RNP) Z RWY 8

LEWISTON-NEZ PERCE COUNTY (LWS)

▽ ▲	GPS required. For uncompensated Baro-VNAV systems, procedure NA below -16°C (3°F) or above 46°C (115°F). When VGSI inop, procedure NA at night.	MISSED APPROACH: Climb to 6000 via track 084° to FEVNI and via track 057° to OFINO and hold.
----------------------	---	--

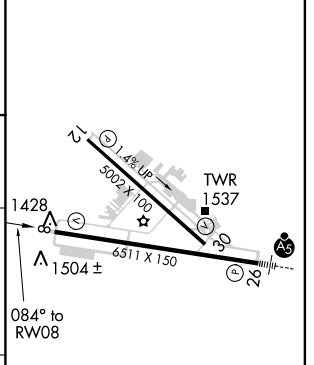
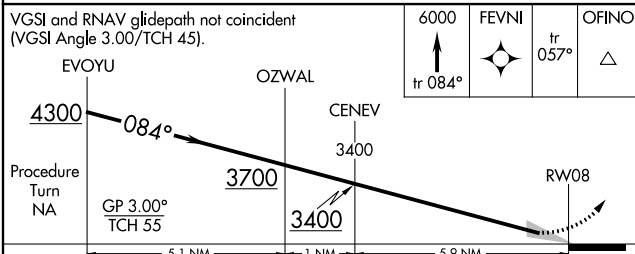
ASOS 135.575	SEATTLE CENTER 123.95 290.55	LEWISTON TOWER ★ 119.4 (CTAF) 0 318.8	GND CON 121.9	UNICOM 122.95
------------------------	--	---	-------------------------	-------------------------



NW-1, 10 OCT 2019 to 07 NOV 2019

NW-1, 10 OCT 2019 to 07 NOV 2019

ELEV 1442	D TDZE 1440
-----------	--------------------



CATEGORY	A	B	C	D
RNP 0.30 DA	1752-1 312 (400-1)			

REIL Rwy 8 0
REIL Rwy 12
HIRL Rwy 8-26
MIRL Rwy 12-30

AUTHORIZATION REQUIRED

RNAV (RNP) Z RWY 8