

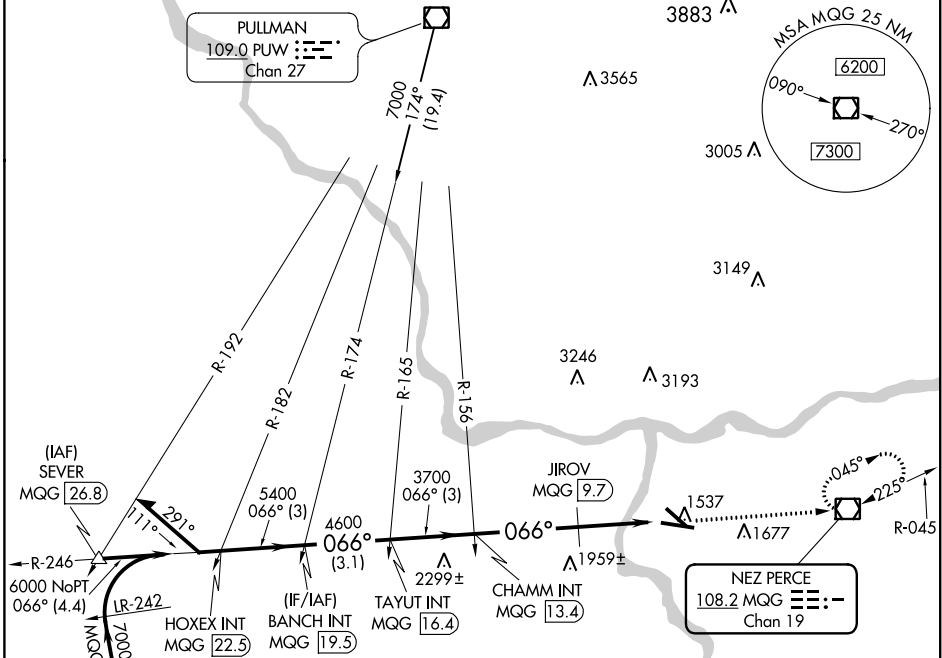
VOR/DME MQG <b>108.2</b> Chan 19	APP CRS <b>066°</b>	Rwy Idg <b>6511</b> TDZE <b>1440</b> Apt Elev <b>1442</b>
--	------------------------	---

# VOR RWY 8

LEWISTON-NEZ PERCE COUNTY (LWS)

MISSED APPROACH: Climb to 5000 direct MQG VOR/DME and hold, continue climb-in-hold to 5000.

ASOS <b>135.575</b>	SEATTLE CENTER <b>123.95 290.55</b>	LEWISTON TOWER ★ <b>119.4</b> (CTAF) <b>318.8</b>	GND CON <b>121.9</b>	UNICOM <b>122.95</b>
------------------------	--	--	-------------------------	-------------------------



NW-1, 10 OCT 2019 to 07 NOV 2019

NW-1, 10 OCT 2019 to 07 NOV 2019

	HOXEX INT MQG 22.5	BANCH INT MQG 19.5	TAYUT INT MQG 16.4	CHAMM INT MQG 13.4	JIROV MQG 9.7	5000 MQG
6800	246°					
6000	066°	5400	4600	3700	2480	
Remain within 10 NM	3 NM	3.1 NM	3 NM	3.7 NM	0.7	2.4
CATEGORY	A	B	C	D		
S-8	2480-1¼ 1040 (1100-1¼)	2480-1½ 1040 (1100-1½)	2480-3	1040 (1100-3)		
CIRCLING	2480-1¼ 1038 (1100-1¼)	2480-1½ 1038 (1100-1½)	2480-3	1038 (1100-3)		
JIROV FIX MINIMUMS						
S-8	2220-1 780 (800-1)	2220-1¼ 780 (800-1¼)	2220-2¼ 780 (800-2¼)	2220-2½ 780 (800-2½)		
CIRCLING	2220-1 778 (800-1)	2220-1¼ 778 (800-1¼)	2220-2¼ 778 (800-2¼)	2220-2½ 778 (800-2½)		

ELEV 1442	TDZE 1440
-----------	-----------

REIL Rwy 8  
REIL Rwy 12  
HIRL Rwy 8-26  
MIRL Rwy 12-30

FAF to MAP 6.8 NM

Knots	60	90	120	150	180
Min:Sec	6:48	4:32	3:24	2:43	2:16

# VOR RWY 8