

# GPS-B

## GUNNISON-CRESTED BUTTE RGNL (GUC)

APP CRS	Rwy Idg	N/A
245°	TDZE	N/A
	Apt Elev	7680

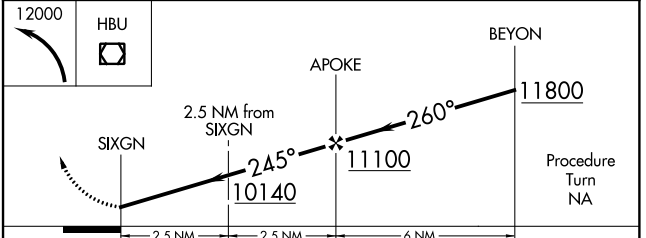
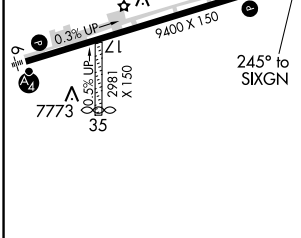
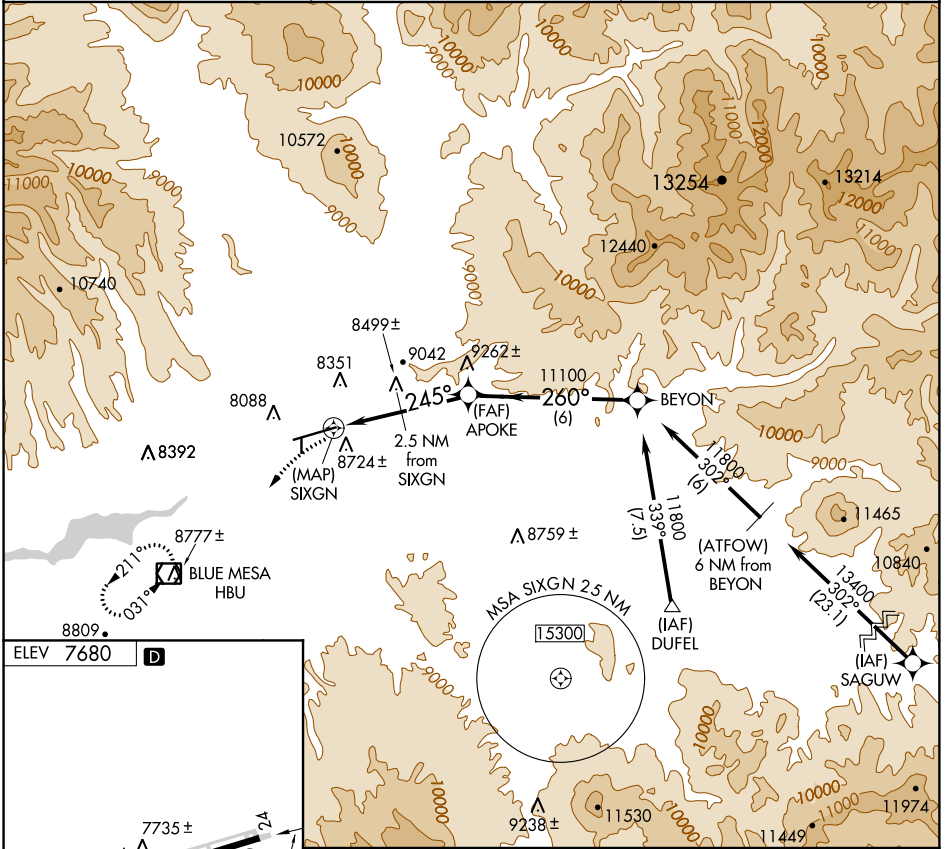
Procedure not authorized when airport closed except by prior arrangement.  
 DME/DME RNP-0.3 NA.

MISSED APPROACH: Climbing left turn to 12000 direct HBU VOR/DME and hold.

AWOS-3PT  
**135.075**

DENVER CENTER  
**124.5 350.25**

UNICOM  
**122.7 (CTAF)**



CATEGORY	A	B	C	D
CIRCLING	9180-1¼ 1500 (1500-1¼)	9180-1½ 1500 (1500-1½)	9180-3	1500 (1500-3)

# GPS-B

SW-1, 10 OCT 2019 to 07 NOV 2019

SW-1, 10 OCT 2019 to 07 NOV 2019