

| | | |
|-------------|----------|-------------|
| APP CRS | Rwy Idg | 9397 |
| 061° | TDZE | 7667 |
| | Apt Elev | 7680 |

RNAV (RNP) RWY 6

GUNNISON-CRESTED BUTTE RGNL (GUC)

RF and GPS required. When local altimeter setting not received, procedure NA. For uncompensated Baro-VNAV systems, procedure NA below -29°C (-20°F) or above 54°C (130°F). When VGSJ inoperative, procedure NA at night. Visibility reduction by helicopters NA. Missed approach requires RNP less than 1.0.

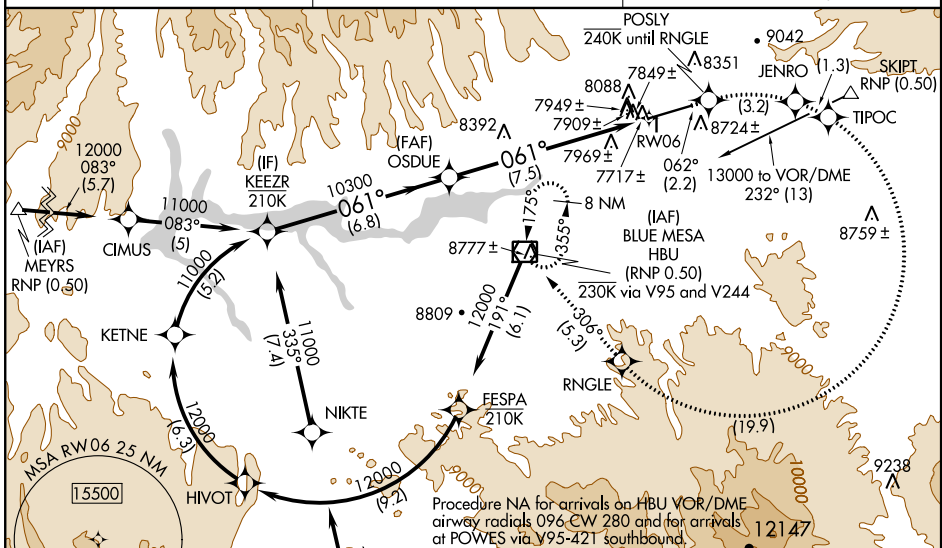
* Missed approach requires minimum climb of 310 feet per NM to 9000.
 # Missed approach requires minimum climb of 260 feet per NM to 9000.
 † Missed approach requires minimum climb of 230 feet per NM to 9000.

For inoperative MALSF, increase RNP 0.11 * visibility to 1½, RNP 0.20 # to 1¼, RNP 0.26 † to 2, and RNP 0.30 to 2¼.

MISSED APPROACH: (Do not exceed 240 KIAS until RNGLE) Climb to 13000 via track 062° to POSLY, and via right turn to JENRO, and via right turn to TIPOC, and via right turn to RNGLE, and via track 306° to HBU VOR/DME and hold.

MALSF

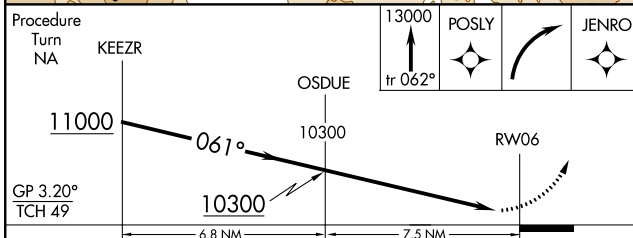
| | | |
|----------------------------|--------------------------------------|-------------------------------|
| AWOS-3PT 135.075 | DENVER CENTER 124.5 350.25 | UNICOM 122.7 (CTAF) |
|----------------------------|--------------------------------------|-------------------------------|



SW-1, 10 OCT 2019 to 07 NOV 2019

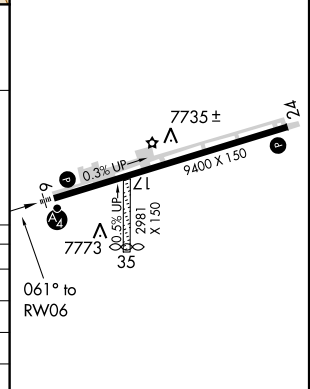
SW-1, 10 OCT 2019 to 07 NOV 2019

| | | | | |
|-------------------|-------|-------|-------|-------|
| Procedure Turn NA | KEEZR | OSDUE | POSLY | JENRO |
| | 11000 | 10300 | 13000 | |
| | 061° | 062° | | |



| CATEGORY | A | B | C | D |
|--------------|----|---------|--------------|----|
| RNP 0.11 DA* | NA | 8125-1¼ | 458 (500-1¼) | NA |
| RNP 0.20 DA# | NA | 8219-1½ | 552 (600-1½) | NA |
| RNP 0.26 DA† | NA | 8294-1¾ | 627 (700-1¾) | NA |
| RNP 0.30 DA | NA | 8354-2 | 687 (700-2) | NA |

| | |
|-----------|-----------|
| ELEV 7680 | TDZE 7667 |
|-----------|-----------|



AUTHORIZATION REQUIRED

HIRL Rwy 6-24
 REIL Rwy 24