

WAAS CH <b>81809</b> <b>W22A</b>	APP CRS <b>223°</b>	Rwy Idg TDZE <b>598</b> Apt Elev <b>598</b>	<b>8001</b>
--	------------------------	---	-------------

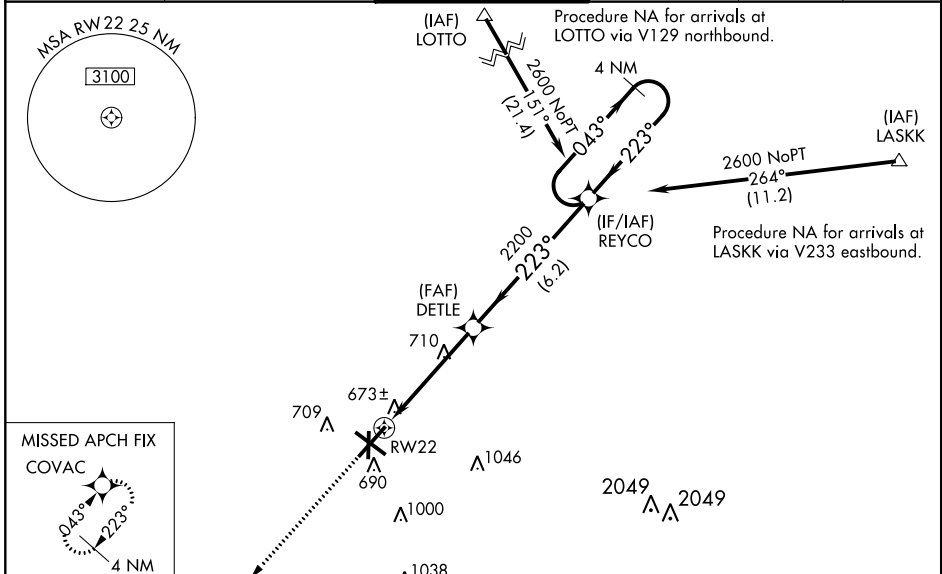
# RNAV (GPS) RWY 22

ABRAHAM LINCOLN CAPITAL (SPI)

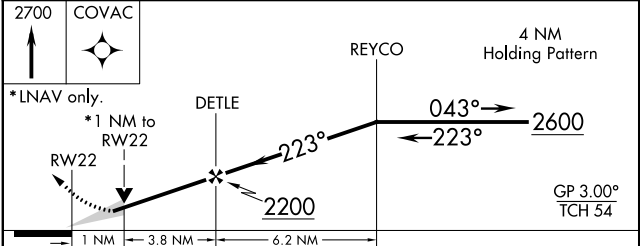
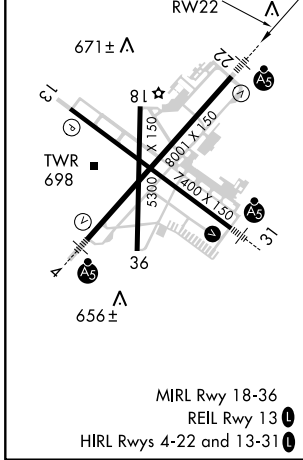
**⚠** DME/DME RNP-0.3 NA. For uncompensated Baro-VNAV systems LNAV/VNAV NA below -16°C (4°F) and above 47°C (116°F). When local altimeter setting not received, use Lincoln altimeter setting and increase all DA 57 feet, all MDA 60 feet, and increase LNAV/VNAV all Cats, LNAV Cats C/D and Circling Cat C visibility ¼ mile. Baro-VNAV and VDP NA when using Lincoln altimeter setting. For inoperative MALSR, increase LPV all Cats visibility to 1 mile. For inoperative MALSR when using Lincoln altimeter setting increase LPV all Cats visibility to 1 ½, LNAV/VNAV all Cats visibility to 1 ¾, LNAV Cats C/D visibility to 1 ¼.

MALSR 	MISSED APPROACH: Climb to 2700 direct COVAC and hold.
-----------	--

ATIS <b>127.65 270.1</b>	SPRINGFIELD APP CON ★ <b>126.15 323.0</b>	SPRINGFIELD TOWER ★ <b>121.3 (CTAF) 257.8</b>	GND CON <b>121.9 348.6</b>	CLNC DEL <b>121.7</b>	UNICOM <b>122.95</b>
-----------------------------	--	--	-------------------------------	--------------------------	-------------------------



ELEV 598	<b>D</b>	TDZE 598
----------	----------	----------



CATEGORY	A	B	C	D
LPV DA		884-½	286 (300-½)	
LNAV/VNAV DA		1050-1	452 (500-1)	
LNAV MDA	960-½	382 (400-½)	960-⅝	382 (400-⅝)
CIRCLING	1160-1¼	562 (600-1¼)	1160-1½	1200-2 602 (700-2)

EC-3, 10 OCT 2019 to 07 NOV 2019

EC-3, 10 OCT 2019 to 07 NOV 2019