

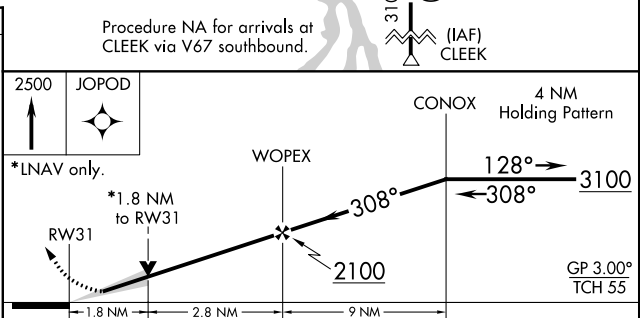
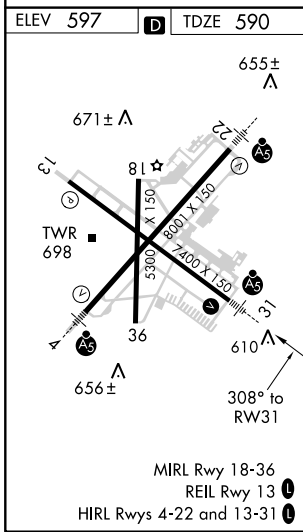
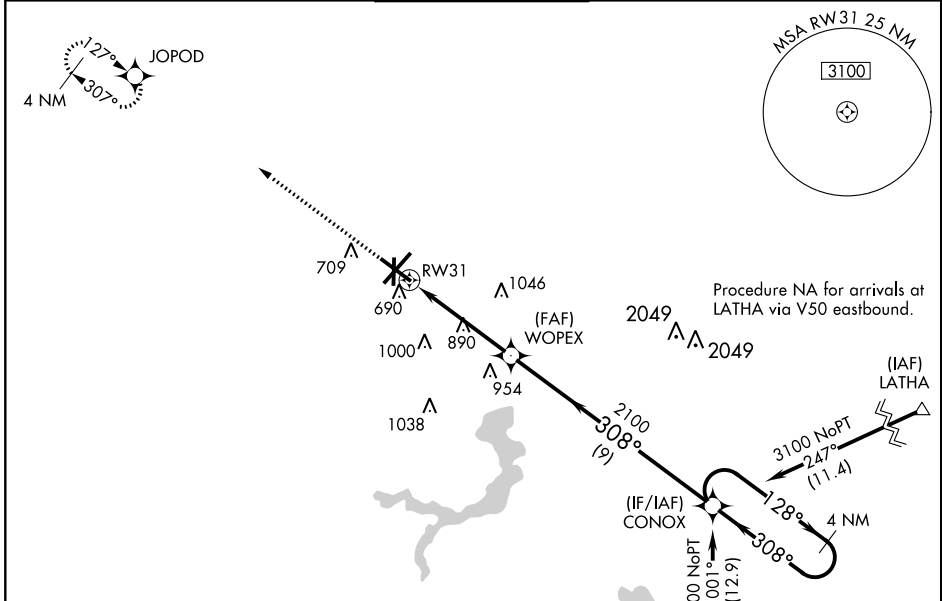
WAAS CH <b>90124</b> <b>W31A</b>	APP CRS <b>308°</b>	Rwy Idg TDZE Apt Elev	<b>7000</b> <b>590</b> <b>597</b>
--	------------------------	-----------------------------	---

# RNAV (GPS) RWY 31

ABRAHAM LINCOLN CAPITAL (SPI)

 	DME/DME RNP-0.3 NA. Baro-VNAV NA below -16°C (4°F). If local altimeter setting not received, use Logan County altimeter setting and increase all DAs/MDAs 60 feet. VDP and Baro-VNAV NA when using Logan County altimeter setting. For inoperative MALSR, increase LPV visibility to ¾ all Cats, increase LNAV/VNAV Cat D visibility to 1.	MALSR 	MISSED APPROACH: Climb to 2500 direct JOPOD and hold.
------	---	-----------	--

ATIS <b>127.65 270.1</b>	SPRINGFIELD APP CON ★ <b>126.15 323.0</b>	SPRINGFIELD TOWER ★ <b>121.3 (CTAF) 257.8</b>	GND CON <b>121.9 348.6</b>	CLNC DEL <b>121.7</b>	UNICOM <b>122.95</b>
-----------------------------	--	--	-------------------------------	--------------------------	-------------------------



CATEGORY	A	B	C	D
LPV DA	840-½ 250 (300-½)			
LNAV/VNAV DA	865-½ 275 (300-½)			865-¾ 275 (300-¾)
LNAV MDA	1200-½ 610 (700-½)	1200-1¼ 610 (700-1¼)		1200-1½ 610 (700-1½)
CIRCLING	1200-1 603 (700-1)	1200-1¾ 603 (700-1¾)		1200-2 603 (700-2)

EC-3, 10 OCT 2019 to 07 NOV 2019

EC-3, 10 OCT 2019 to 07 NOV 2019