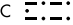


(HOCUT5.HOCUT) 17285
HOCUT FIVE DEPARTURE

CALIFORNIA REDWOOD COAST-HUMBOLDT COUNTY (ACV)
 AL-519 (FAA)
 ARCATA/EUREKA, CALIFORNIA

OAKLAND FSS
 122.6
 SEATTLE CENTER
 124.85 306.3

CRESCENT CITY
 109.0 CEC 
 Chan 27
 N41°46.77' - W124°14.45'
 L-2, H-3

**TOP ALTITUDE:
 ASSIGNED BY ATC**

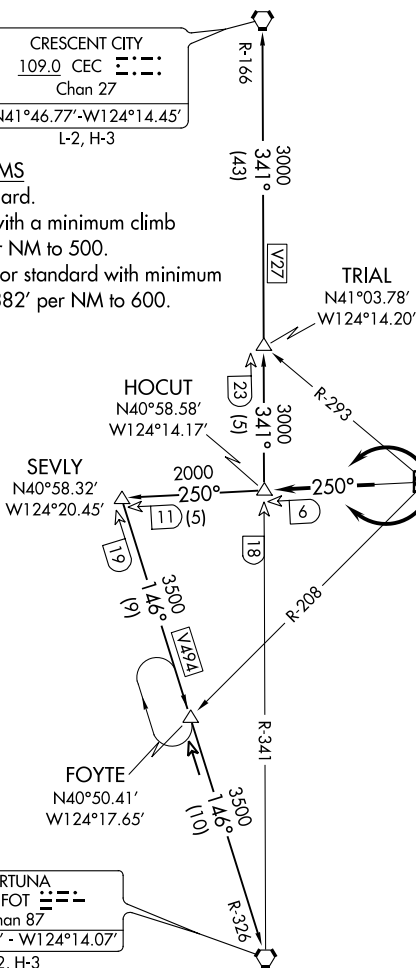
TAKEOFF MINIMUMS

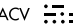
Rwy 19, 32: Standard.


Rwy 1: Standard with a minimum climb of 360' per NM to 500.

Rwy 14: 400-2 1/2 or standard with minimum climb of 382' per NM to 600.

SW-2, 10 OCT 2019 to 07 NOV 2019



ARCATA
 110.2 ACV 
 Chan 39

FORTUNA
 114.0 FOT 
 Chan 87
 N40°40.28' - W124°14.07'
 L-2, H-3

NOTE: Chart not to scale.

SW-2, 10 OCT 2019 to 07 NOV 2019

DEPARTURE ROUTE DESCRIPTION

TAKEOFF RUNWAYS 1 and 32: Climbing left turn on ACV R-250, thence. . . .

TAKEOFF RUNWAYS 14 and 19: Climbing right turn on ACV R-250, thence. . . .
 . . . on (transition) or (assigned route).

CRESCENT CITY TRANSITION (HOCUT5.CEC): From over HOCUT INT on FOT R-341 and CEC R-166 to CEC VORTAC.

FORTUNA TRANSITION (HOCUT5.FOT): From over HOCUT INT on ACV R-250 to SEVLY INT, then via FOT R-326 to FOT VORTAC.

HOCUT FIVE DEPARTURE
 (HOCUT5.HOCUT) 12OCT17

ARCATA/EUREKA, CALIFORNIA
 CALIFORNIA REDWOOD COAST-HUMBOLDT COUNTY (ACV)