

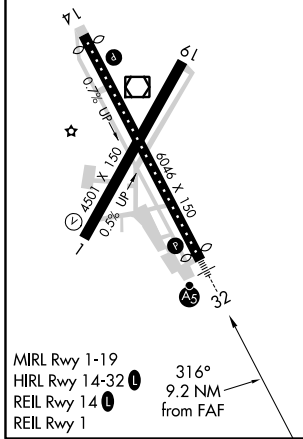
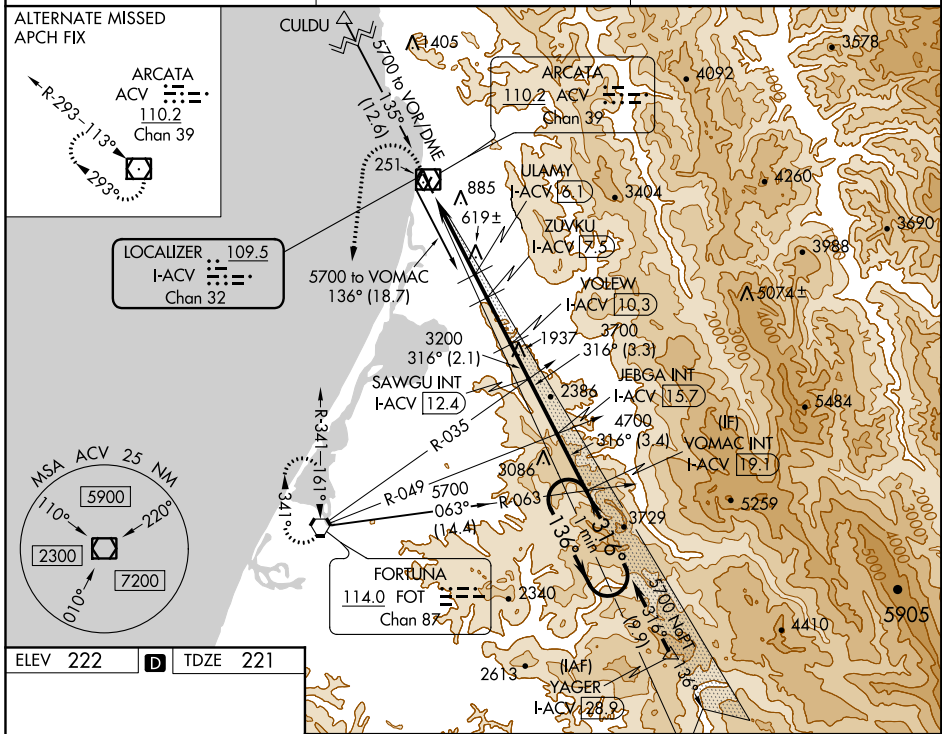
LOC/DME I-ACV <b>109.5</b> Chan <b>32</b>	APP CRS <b>316°</b>	Rwy Idg TDZE Apt Elev	<b>5846</b> <b>221</b> <b>222</b>
---	------------------------	-----------------------------	---

# ILS or LOC RWY 32

CALIFORNIA REDWOOD COAST-HUMBOLDT COUNTY (ACV)

<p><b>NA</b> Circling NA northeast of Rwy 14-32. DME required.</p>	<p><b>MALSR</b> AS</p>	<p><b>MISSED APPROACH:</b> Climb to 800 then climbing left turn to 3000 direct FOT VORTAC and hold.</p>
--	----------------------------	---

<p><b>ASOS</b> <b>118.525</b></p>	<p><b>SEATTLE CENTER</b> <b>124.85 306.3</b></p>	<p><b>UNICOM</b> <b>123.0 (CTAF)</b></p>
---------------------------------------	--	--



800	3000	FOT	Use I-ACV DME when on the localizer course. VGSi and ILS glidepath not coincident (VGSi Angle 3.00/TCH 43).	VOMAC I-ACV 19.1	One Minute Holding Pattern
*LOC only					
I-ACV 1.1	I-ACV 3	I-ACV 6.1	I-ACV 7.5	I-ACV 10.3	I-ACV 15.7
1860*	2320*	3200	3700	4700	5700
1.9	3.1 NM	1.4 NM	2.8 NM	2.1 NM	3.3 NM
GS 3.00° TCH 47					

CATEGORY	A	B	C	D
S-ILS 32	441/18 220 (300-1/2)			
S-LOC 32	880/24	659 (700-1/2)	880-1 3/8	659 (700-1 3/8)
<b>C</b> CIRCLING	880-1	658 (700-1)	880-1 7/8	880-2 658 (700-2)

SW-2, 10 OCT 2019 to 07 NOV 2019

SW-2, 10 OCT 2019 to 07 NOV 2019