

VOR/DME ACV 110.2 Chan 39	APP CRS 123°	Rwy Idg TDZE Apt Elev	5601 205 222
---	------------------------	-----------------------------	---

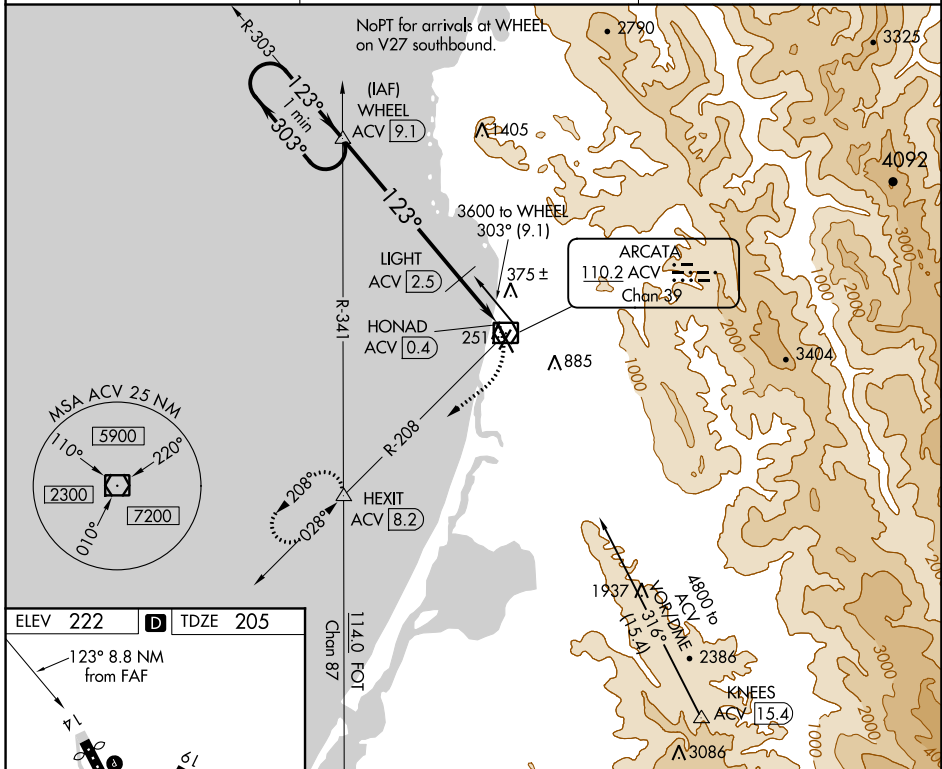
VOR RWY 14

CALIFORNIA REDWOOD COAST-HUMBOLDT COUNTY (ACV)

V DME required.
Circling NA northeast of Rwy 14-32.
Rwy 14 helicopter visibility reduction below $\frac{3}{4}$ SM NA.

MISSED APPROACH: Climbing right turn to 3000 on ACV R-208 to HEXIT INT/ 8.2 DME and hold, continue climb-in-hold to 3000.

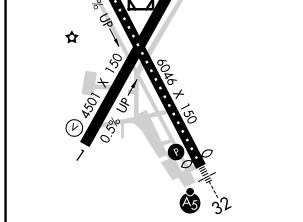
ASOS 118.525	SEATTLE CENTER 124.85 306.3	UNICOM 123.0 (CTAF) 0
------------------------	---------------------------------------	--



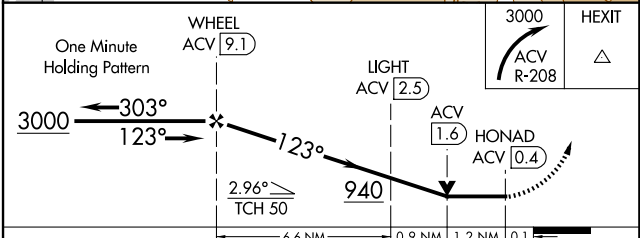
SW-2. 10 OCT 2019 to 07 NOV 2019

SW-2. 10 OCT 2019 to 07 NOV 2019

ELEV 222	D	TDZE 205
----------	----------	----------



- MIRL Rwy 1-19
- HIRL Rwy 14-32 **0**
- REIL Rwy 14 **0**
- REIL Rwy 1



CATEGORY	A	B	C	D
S-14	640/55	435 (500-1)	640-1 $\frac{1}{4}$	435 (500-1 $\frac{1}{4}$)
C CIRCLING	640-1 418 (500-1)	680-1 458 (500-1)	840-1 $\frac{3}{4}$ 618 (700-1 $\frac{3}{4}$)	880-2 658 (700-2)

VOR RWY 14