

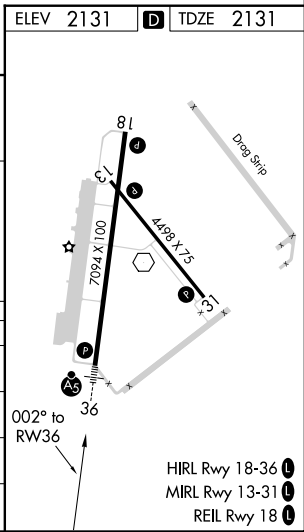
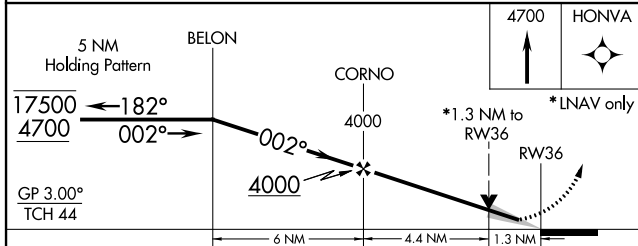
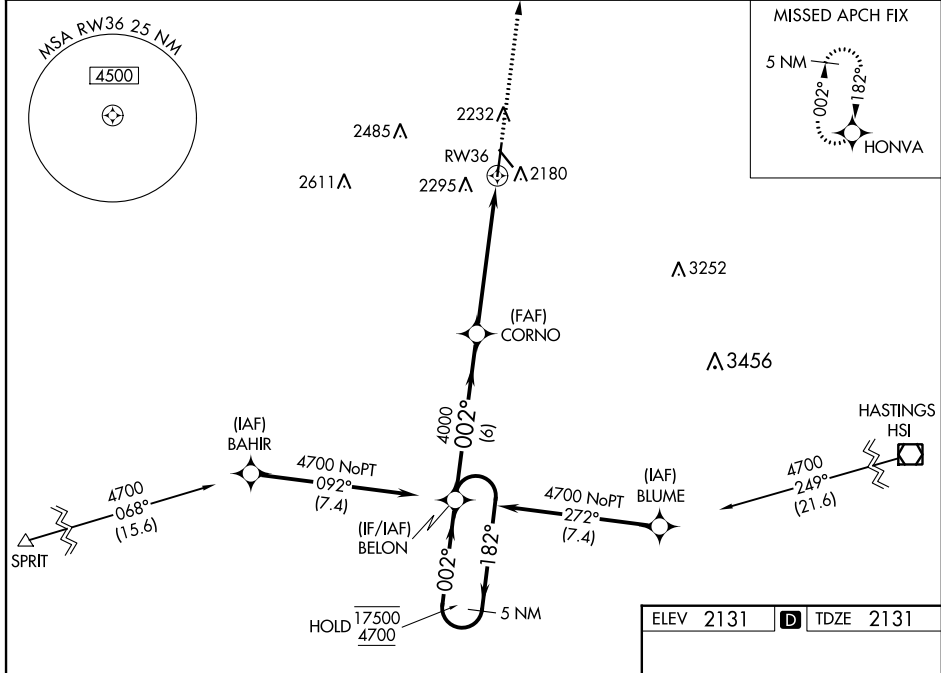
WAAS CH <b>90113</b> <b>W36A</b>	APP CRS <b>002°</b>	Rwy Idg TDZE Apt Elev	<b>7094</b> <b>2131</b> <b>2131</b>
--	------------------------	-----------------------------	---

# RNAV (GPS) RWY 36

KEARNEY RGNL (E.A.R.)

RNP APCH. ▼ For uncompensated Baro-VNAV systems, LNAV/VNAV NA below -23°C or above 54°C. For inop ALS, increase LNAV/VNAV all Cats visibility to ½ SM. ▲	MALSR 	MISSED APPROACH: Climb to 4700 direct HONVA and hold.
--	-----------	---

AWOS-3PT <b>123.875</b>	MINNEAPOLIS CENTER <b>119.4 278.8</b>	UNICOM <b>123.0 (CTAF) 0</b>
----------------------------	--	---------------------------------



CATEGORY	A	B	C	D
LPV DA	2331-½		200 (200-½)	
LNAV/VNAV DA	2419-½		288 (300-½)	
LNAV MDA	2580-½ 449 (500-½)		2580-⅞ 449 (500-⅞)	
CIRCLING	2600-1	469 (500-1)	2640-1½ 509 (600-1½)	2840-2¼ 709 (800-2¼)

NC-2, 10 OCT 2019 to 07 NOV 2019

NC-2, 10 OCT 2019 to 07 NOV 2019