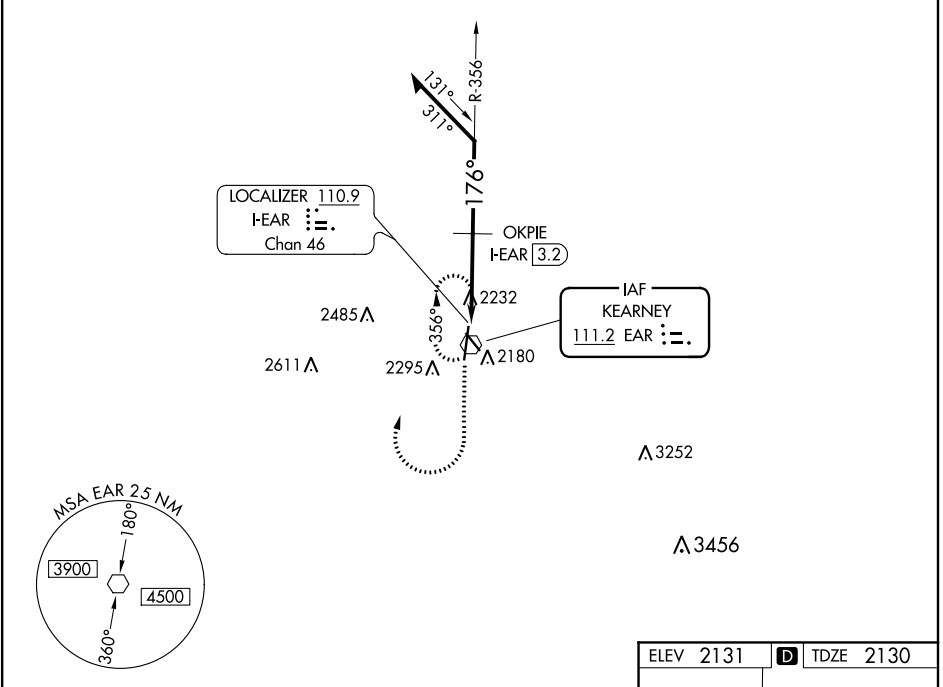


VOR EAR 111.2	APP CRS 176°	Rwy Idg TDZE Apt Elev	7094 2130 2131
-------------------------	------------------------	-----------------------------	---

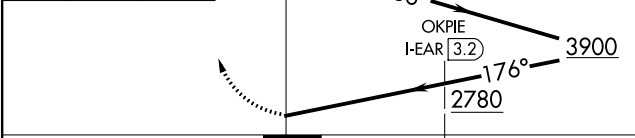
VOR RWY 18
KEARNEY RGNL (E.A.R.)

⚠ MISSED APPROACH: Climb to 3900 then right turn direct EAR VOR and hold.

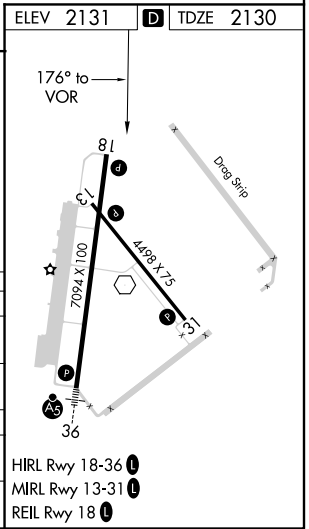
AWOS-3PT 123.875	MINNEAPOLIS CENTER 119.4 278.8	UNICOM 123.0 (CTAF) 0
----------------------------	--	---------------------------------



3900 ↑ EAR Remain within 10 NM



CATEGORY	A	B	C	D
S-18	2780-1	650 (700-1)	2780-1¾ 650 (700-1¾)	2780-1½ 650 (700-1½)
CIRCLING	2780-1	649 (700-1)	2780-1¾ 649 (700-1¾)	2840-2¼ 709 (800-2¼)
OKPIE FIX MINIMUMS				
S-18	2660-1	530 (600-1)	2660-1½	530 (600-1½)
CIRCLING	2660-1	529 (600-1)	2660-1½ 529 (600-1½)	2840-2¼ 709 (800-2¼)



NC-2, 10 OCT 2019 to 07 NOV 2019

NC-2, 10 OCT 2019 to 07 NOV 2019