

RNAV (RNP) Y RWY 31L

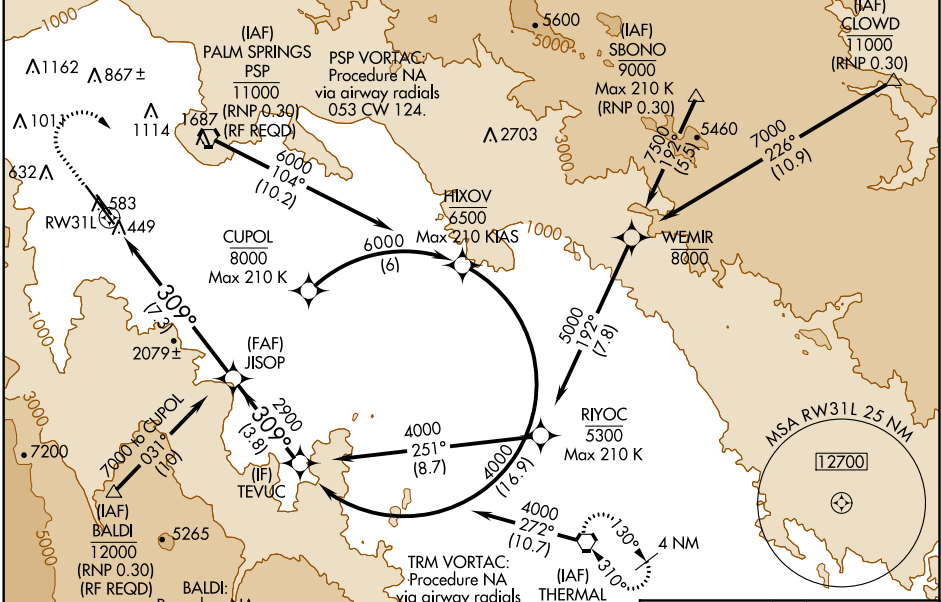
PALM SPRINGS INTL (PSP)

APP CRS	Rwy Idg	8500
309°	TDZE	430
	Apt Elev	477

GPS required. Procedure NA when control tower closed.
NA For uncompensated Baro-VNAV systems, procedure NA below 2°C (35°F) or above 38°C (102°F).
 Missed approach requires minimum climb of 340' per NM to 3000.

MISSED APPROACH: Climb to 1800, then climbing right turn to 4000 direct TRM VORTAC and hold.

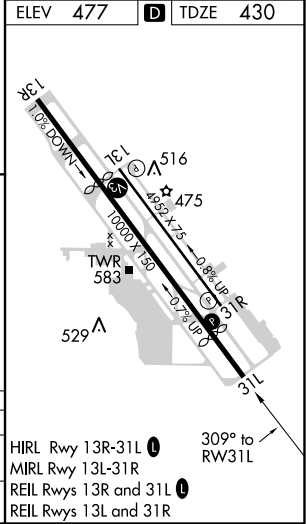
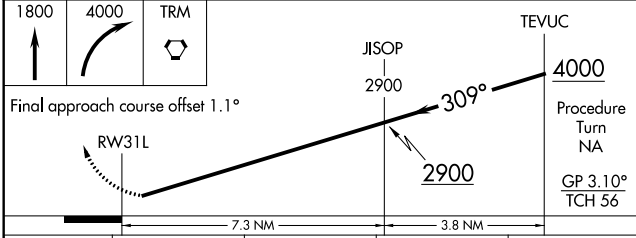
ATIS	SOCAL APP CON *	PALM SPRINGS TOWER *	GND CON	CLNC DEL	UNICOM
124.65	126.7 370.95 135.275 251.1	119.7 (CTAF) 0 377.05	121.9	128.35	122.95



SW-3, 10 OCT 2019 to 07 NOV 2019

SW-3, 10 OCT 2019 to 07 NOV 2019

ELEV	477	D	TDZE	430
------	-----	----------	------	-----



CATEGORY	A	B	C	D
RNP 0.30 DA	734-1 304 (300-1)			

AUTHORIZATION REQUIRED