

RNAV (RNP) Z RWY 13R

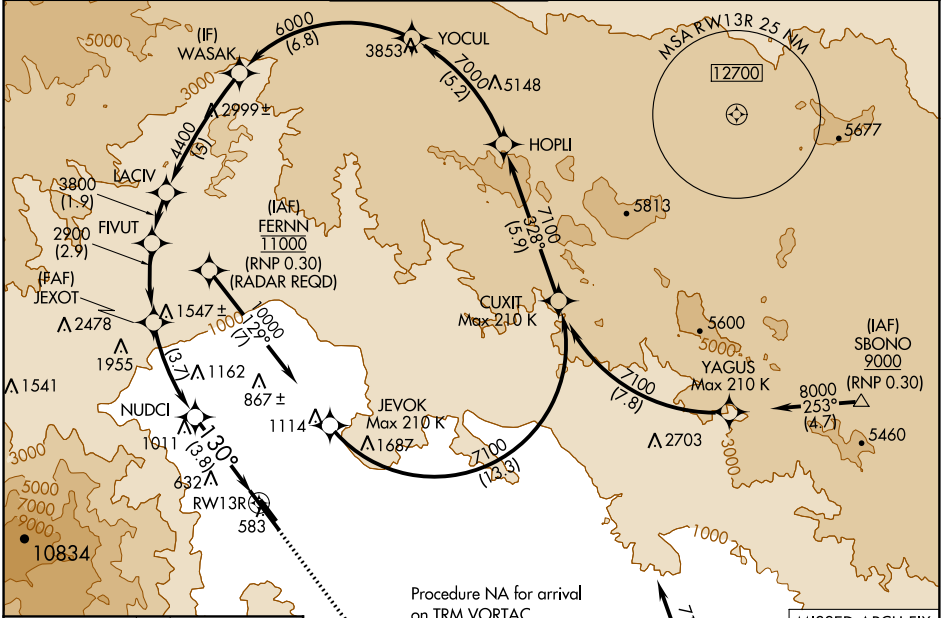
PALM SPRINGS INTL (PSP)

APP CRS 130°	Rwy Idg 6857
	TDZE 451
	Apt Elev 476

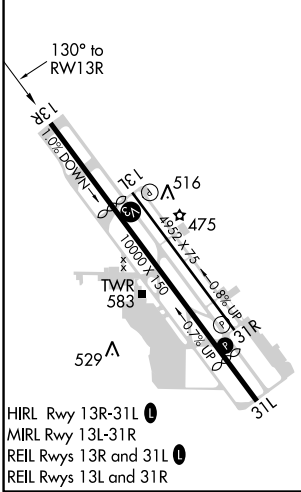
NA For uncompensated Baro-VNAV systems, procedure NA below 1°C (34°F) or above 54°C (130°F).
RF required. GPS required.
Procedure NA when control tower closed.

MISSED APPROACH: Climb to 900 then climbing left turn to 4000 direct TRM VORTAC and hold.

ATIS 124.65	SOCAL APP CON* 126.7 370.95 135.275 251.1	PALM SPRINGS TOWER* 119.7 (CTAF) 377.05	GND CON 121.9	CLNC DEL 128.35	UNICOM 122.95
-----------------------	---	---	-------------------------	---------------------------	-------------------------



ELEV 476	D	TDZE 451
----------	----------	----------



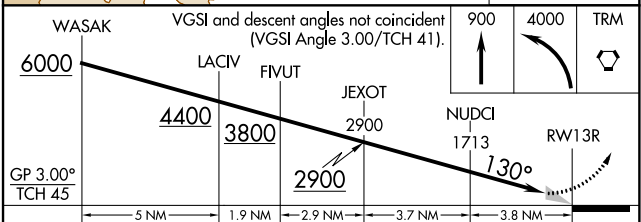
HIRL Rwy 13R-31L
MIRL Rwy 13L-31R
REIL Rwy 13R and 31L
REIL Rwy 13L and 31R

Procedure NA for arrival on TRM VORTAC airway radials 263 CW 021.

(IAF) THERMAL TRM 9000 (RNP 0.30)

MISSED APCH FIX

THERMAL TRM 130° 4 NM



CATEGORY	A	B	C	D
RNP 0.17 DA		812-1¼	361 (400-1¼)	
RNP 0.30 DA		882-1½	431 (500-1½)	

AUTHORIZATION REQUIRED

SW-3, 10 OCT 2019 to 07 NOV 2019

SW-3, 10 OCT 2019 to 07 NOV 2019