

APP CRS	Rwy Idg	10000
057°	TDZE	1103
	Apt Elev	1159

RNAV (GPS) Y RWY 6

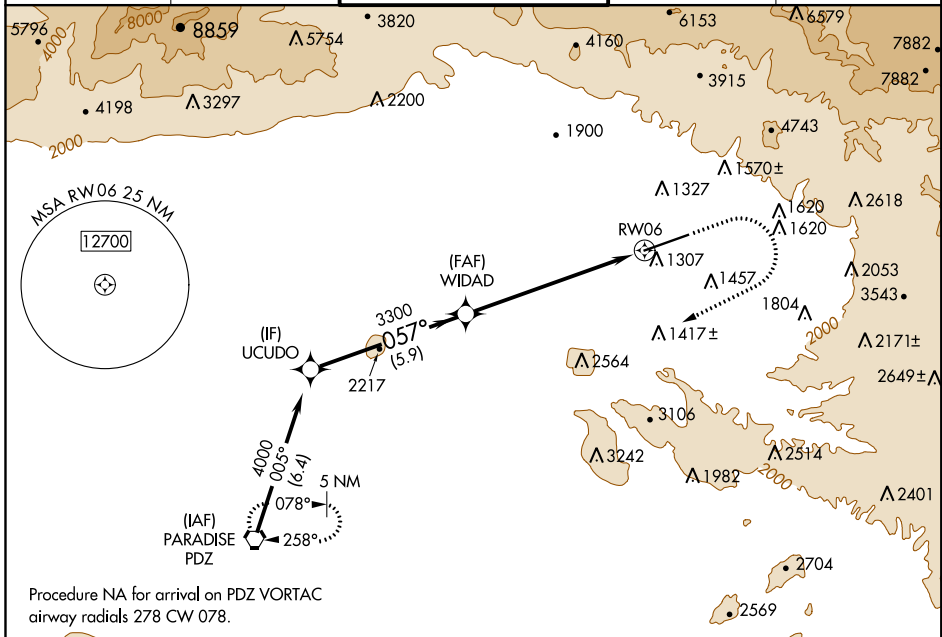
SAN BERNARDINO INTL (SBD)

RNP APCH

▼ Circling NA northwest of Rwy 6-24. When local altimeter setting not received, use Ontario altimeter setting and increase all MDA 80 feet.

MISSED APPROACH: Climb to 2800 then climbing right turn to 6000 direct PDZ VORTAC and hold, continue climb-in-hold to 6000.

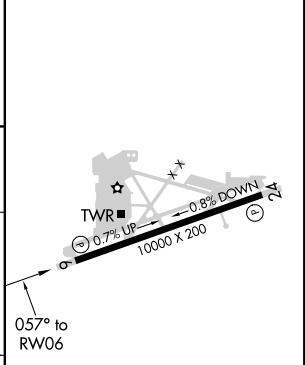
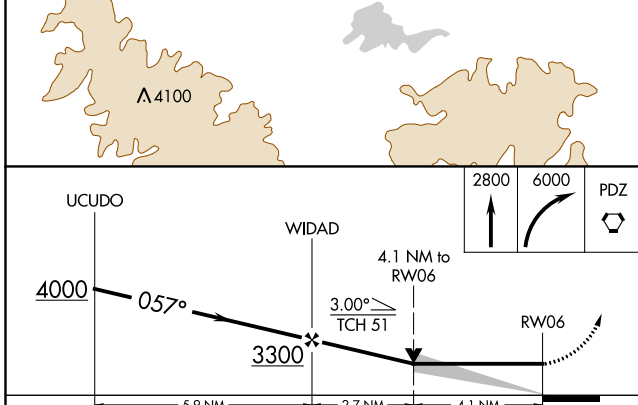
ATIS 124.175	SOCAL APP CON 127.0 318.2	SAN BERNARDINO TOWER★ 119.45 (CTAF) 0	GND CON 121.8	UNICOM 122.975
------------------------	-------------------------------------	---	-------------------------	--------------------------



SW-3, 10 OCT 2019 to 07 NOV 2019

SW-3, 10 OCT 2019 to 07 NOV 2019

ELEV 1159	D TDZE 1103
-----------	--------------------



CATEGORY	A	B	C	D
LNVA MDA	2460-1¼ 1357 (1400-1¼)	2460-1½ 1357 (1400-1½)	2460-3 1357 (1400-3)	1357 (1400-3)
C CIRCLING	2460-1¼ 1301 (1400-1¼)	2460-1½ 1301 (1400-1½)	2460-3 1301 (1400-3)	2640-3 1481 (1500-3)

HIRL Rwy 6-24 **0**
REIL Rws 6 and 24 **0**