

VOR/DME CIC 109.8 Chan 35	APP CRS 327°	Rwy Idg TDZE Apt Elev 6724 224 238
---	------------------------	--

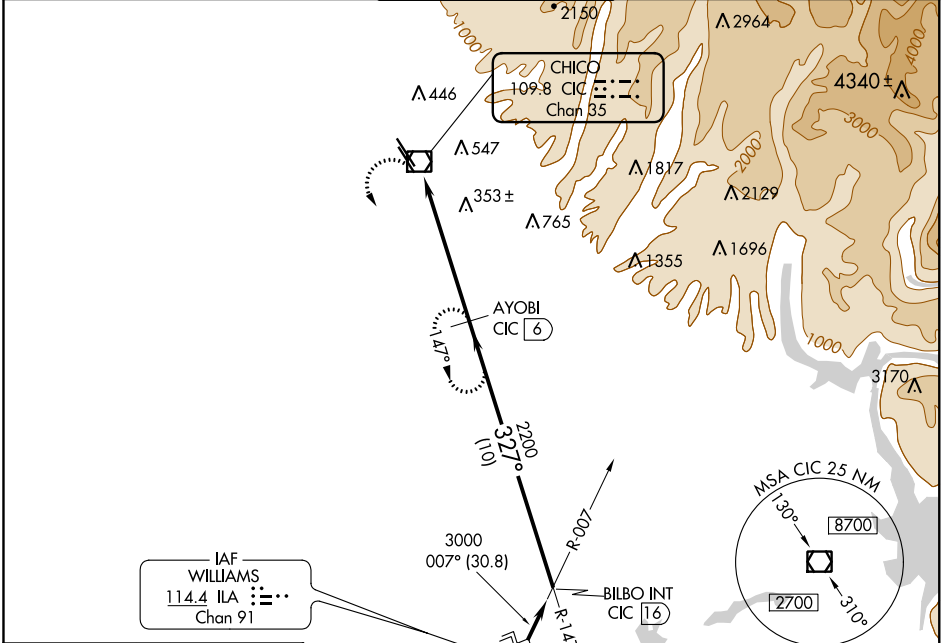
VOR/DME RWY 31R

CHICO MUNI (CIC)

⚠ Circling not authorized east of Rwy 13L-31R.
⚠ When control tower closed, except for operators with approved weather reporting service, use Red Bluff altimeter setting.

MISSED APPROACH: Climbing left turn to 2000 via CIC R-147 to AYOBI/6 DME and hold.

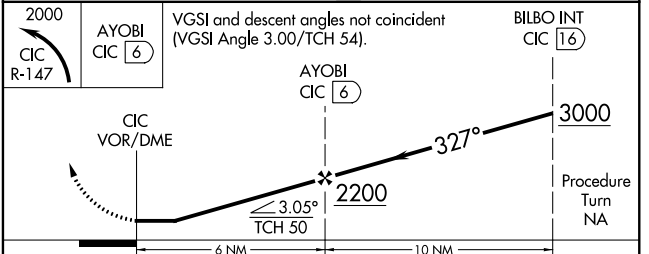
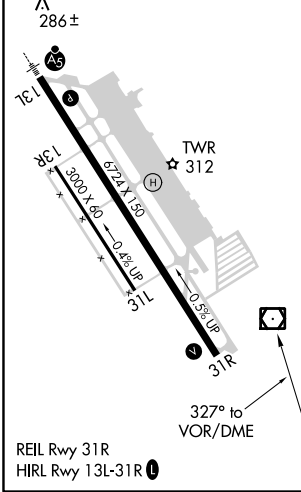
ATIS 119.675	OAKLAND CENTER 132.2 350.3	CHICO TOWER ★ 121.0 (CTAF) 239.3	GND CON 121.9	UNICOM 122.95
------------------------	--------------------------------------	--	-------------------------	-------------------------



SW-2, 10 OCT 2019 to 07 NOV 2019

SW-2, 10 OCT 2019 to 07 NOV 2019

ELEV 238	D	TDZE 224
----------	----------	----------



CATEGORY	A	B	C	D
S-31R	760-1 536 (600-1)	760-1½ 536 (600-½)	760-1¾ 536 (600-¾)	760-2 536 (600-2)
CIRCLING	760-1 522 (600-1)	760-1½ 522 (600-½)	760-2 522 (600-2)	800-2 562 (600-2)
RED BLUFF ALTIMETER SETTING MINIMUMS				
S-31R	840-1 616 (700-1)	840-1¾ 616 (700-¾)	840-2 616 (700-2)	840-2 616 (700-2)
CIRCLING	840-1 602 (700-1)	840-1¾ 602 (700-¾)	840-2 602 (700-2)	840-2 602 (700-2)