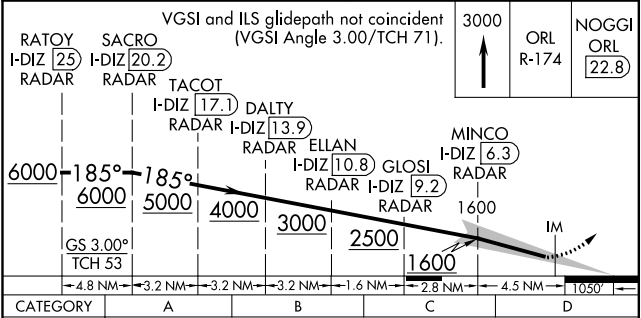
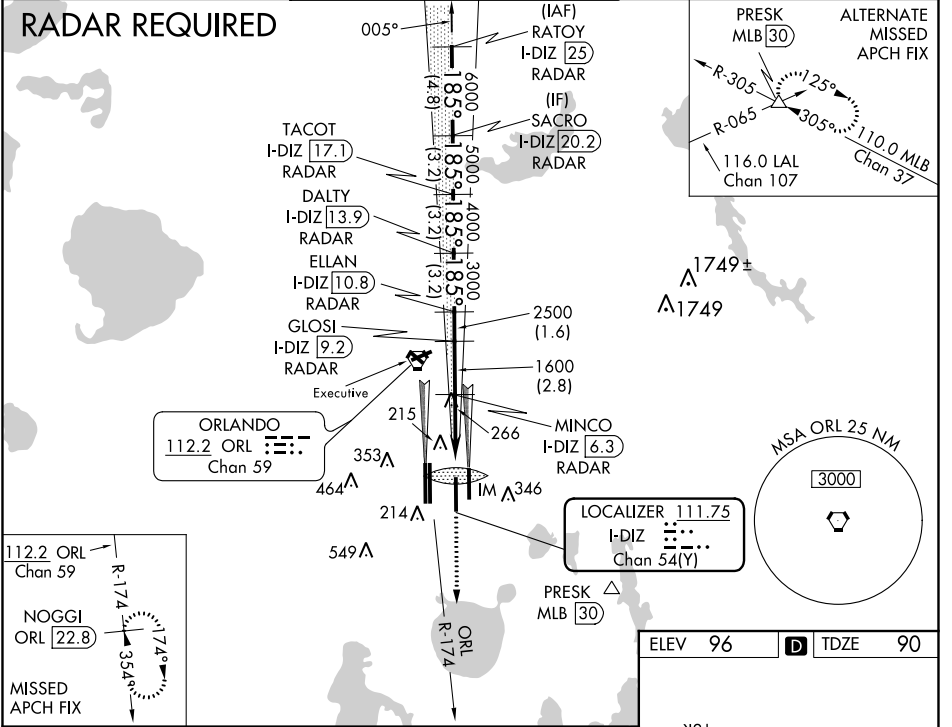


| | | |
|---|------------------------|--|
| LOC/DME I-DIZ 111.75 Chan 54(Y) | APP CRS 185° | Rwy ldg 10000 TDZE 90 Apt Elev 96 |
|---|------------------------|--|

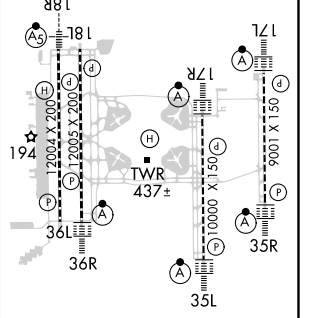
ILS RWY 17R (CAT II)

ORLANDO INTL (MCO)

| | | | | | | |
|---|---------------------------------------|--|---|---|--|-------|
| <p>Simultaneous approach authorized. DME or RADAR required. Bright lights on highway midway between Rwy 17L and Rwy 17R may be mistaken for runway lights.</p> | | <p>ALS F-2 </p> | <p>MISSED APPROACH: Climb to 3000 via ORL VORTAC R-174 to NOGGI/ ORL 22.8 DME and hold.</p> | | | |
| D-ATIS ARR 121.25 DEP 120.525 | ORLANDO APP CON 124.8 307.0 | ORLANDO TOWER 124.3 (Rwys 18L-36R, 18R-36L) 118.45 (Rwys 17L-35R, 17R-35L) | 253.5 | GND CON 126.4 275.8 (East) 121.8 275.8 (West) | CLNC DEL 134.7 341.7 | CPDLC |



| | | |
|----------------|----------|----------------|
| ELEV 96 | D | TDZE 90 |
|----------------|----------|----------------|



CATEGORY II ILS - SPECIAL AIRCREW & AIRCRAFT CERTIFICATION REQUIRED

HIRL all Rwys
REIL Rwy 36L
TDZ/CL Rwys 17L/R, 18R, 35L/R and 36R

SE-3, 10 OCT 2019 to 07 NOV 2019

SE-3, 10 OCT 2019 to 07 NOV 2019