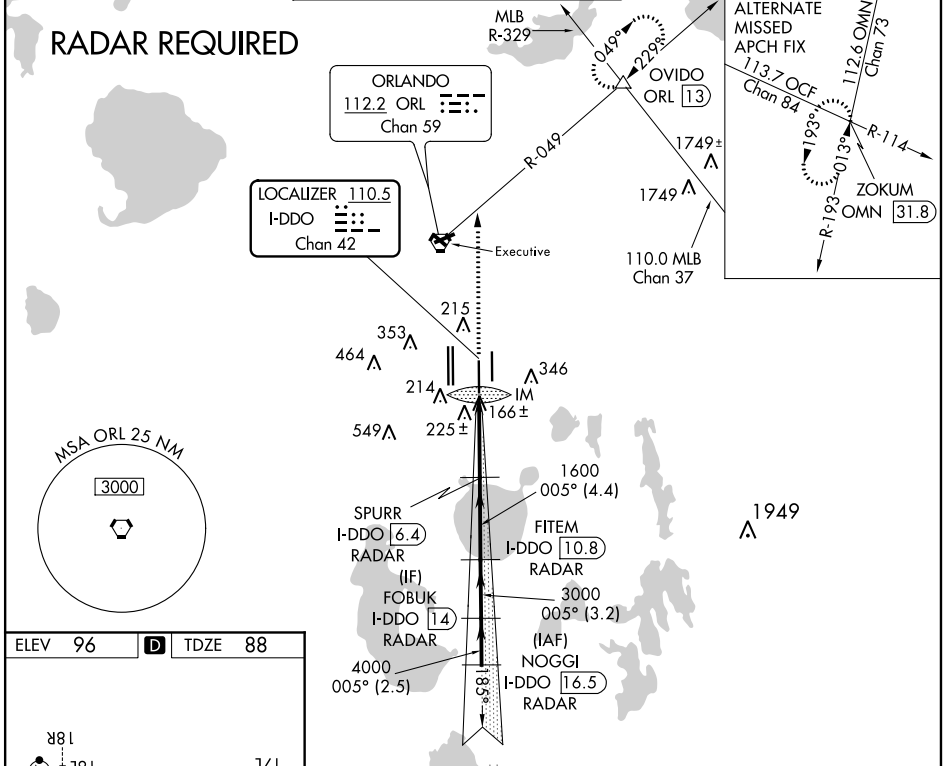


LOC/DME I- DDO 110.5 Chan 42	APP CRS 005°	Rwy Idg TDZE 88 Apt Elev 96	10000
---	------------------------	---	--------------

ILS RWY 35L (SA CAT I)

ORLANDO INTL (MCO)

<p>▼ DME or RADAR required. Bright lights on highway midway between Rwy 35L and Rwy 35R may be mistaken for runway lights. Simultaneous approach authorized. When using alternate missed approach, simultaneous approach NA. Requires specific OPSPEC, MSPEC or LOA approval and use of HUD to DH.</p>		<p>ALSF-2 A</p>	<p>MISSED APPROACH: Climb to 3000 on heading 005° and ORL VORTAC R-049 to OVIDO INT/ ORL 13 DME and hold.</p>		
D-ATIS ARR 121.25 DEP 120.525	ORLANDO APP CON 124.8 307.0	ORLANDO TOWER 124.3 (Rwys 18L-36R, 18R-36L) 253.5 118.45 (Rwys 17L-35R, 17R-35L) 253.5	GND CON 126.4 275.8 (East) 121.8 275.8 (West)	CLNC DEL 134.7 341.7	CPDLC



ELEV 96	D	TDZE 88			
3000	hdg 005°	ORL R-049	OVIDO	VGSI and ILS glidepath not coincident (VGSI Angle 3.00/TCH 72).	NOGGI I-DDO [16.5] RADAR
IM	1600	3000	4000	5000	FOBUK I-DDO [14] RADAR
SPURR I-DDO [6.4] RADAR	FITEM I-DDO [10.8] RADAR	005°			
4.6 NM	4.4 NM	3.2 NM	2.5 NM	GS 3.00° TCH 57	
CATEGORY	A	B	C	D	
S-ILS 35R	RA 164/14 150 DA 238				
SA CATEGORY I ILS - SPECIAL AIRCREW & AIRCRAFT CERTIFICATION REQUIRED					

SE-3, 10 OCT 2019 to 07 NOV 2019

SE-3, 10 OCT 2019 to 07 NOV 2019