


LOC/DME I-CER 111.15 Chan 48(Y)	APP CRS 005°	Rwy Idg 9000 TDZE 90 Apt Elev 96
---	------------------------	---

ILS RWY 35R (SA CAT I)

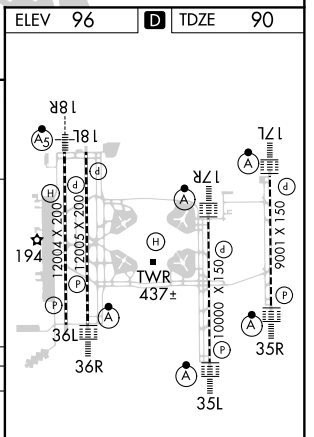
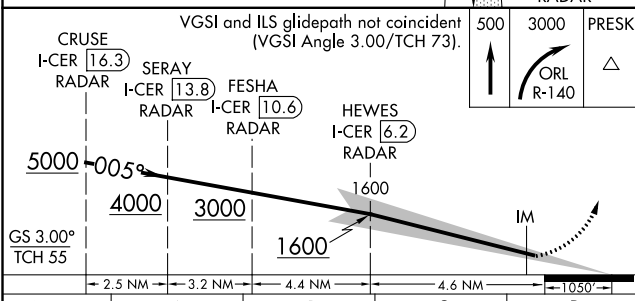
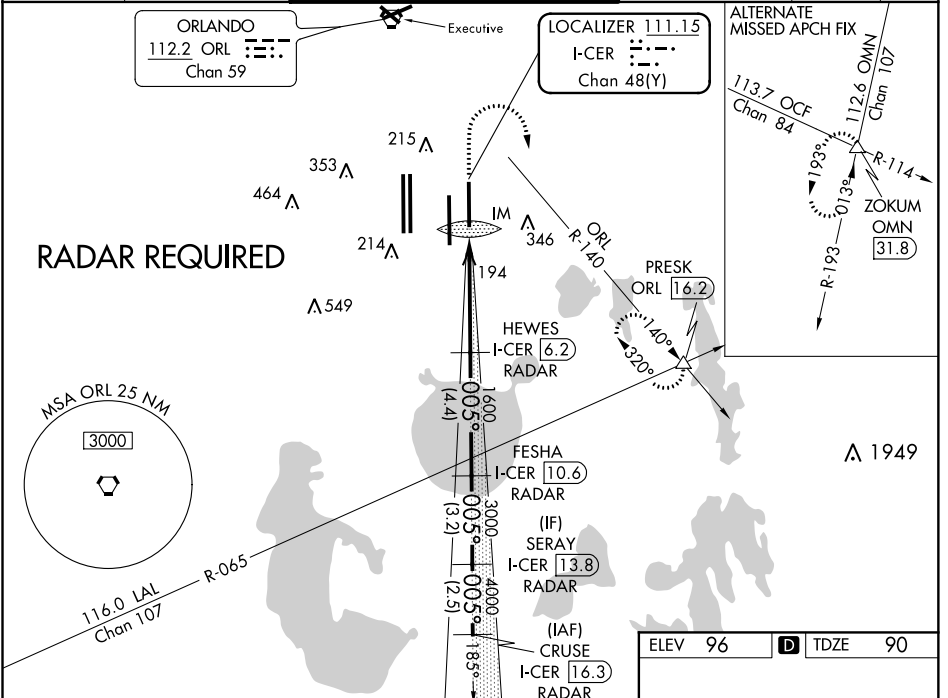
ORLANDO INTL (MCO)

⚠ DME or RADAR required. Bright lights on highway midway between Rwy 35L and Rwy 35R may be mistaken for runway lights. Simultaneous approach authorized. When using alternate missed approach, simultaneous approach NA. Requires specific OPSPEC, MSPEC, or LOA approval and use of HUD to DH.

ALSIF-2 

MISSED APPROACH: Climb to 500 then climbing right turn to 3000 on ORL VORTAC R-140 to PRESK INT/ORL 16.2 DME and hold, continue climb-in-hold to 3000.

D-ATIS ARR 121.25 DEP 120.525	ORLANDO APP CON 124.8 307.0	ORLANDO TOWER 124.3 (Rwys 18L-36R, 18R-36L) 118.45 (Rwys 17L-35R, 17R-35L)	253.5 253.5	GND CON 126.4 275.8 (East) 121.8 275.8 (West)	CLNC DEL 134.7 341.7	CPDLC
---	---------------------------------------	--	------------------------------	---	--	-------



CATEGORY	A	B	C	D
S-ILS 35R	RA 157/14 150 DA 240			

SA CATEGORY I ILS - SPECIAL AIRCREW & AIRCRAFT CERTIFICATION REQUIRED

HIRL all Rwys
REIL Rwy 36L
TDZ/CL Rwys 17L/R, 18R, 35L/R and 36R

SE-3, 10 OCT 2019 to 07 NOV 2019

SE-3, 10 OCT 2019 to 07 NOV 2019